



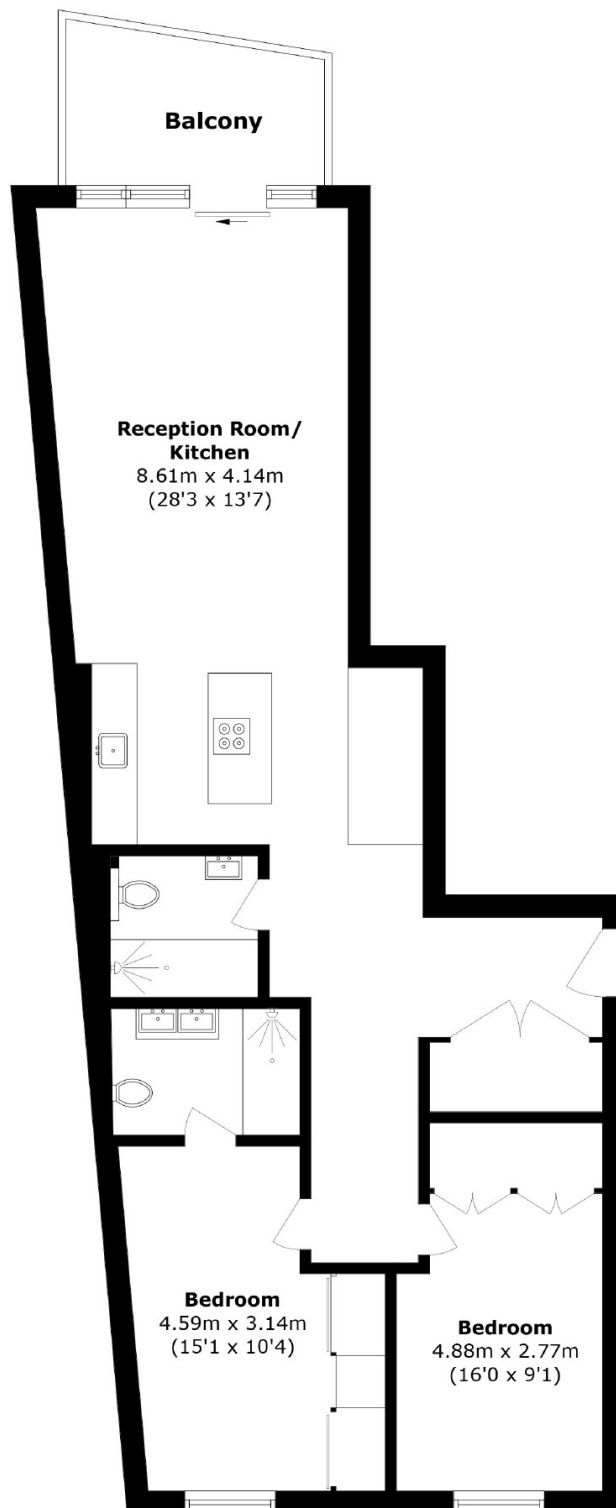
Wapping High Street, E1W

£1,250,000

 2
  1
  2
  C

- Two Bedroom
- Two Bathroom
- 24 Hour Concierge

- Allocated Parking Space
- Residents Gym
- Tower Bridge Views



Total area (approx.): 86.6 sq. m (932.1 sq. ft)

Balcony area (approx.): 6.6 sq. m (71.0 sq. ft)

35A Wapping High Street,
London, E1W 1NR
020 7665 5589
ea2group.com