



## Torrington Place, E1W

£950,000

 3  1  1  D

- Canal Development.
- 3 Bedrooms
- Plus Loft Room
- Conservatory
- Garden
- Garage

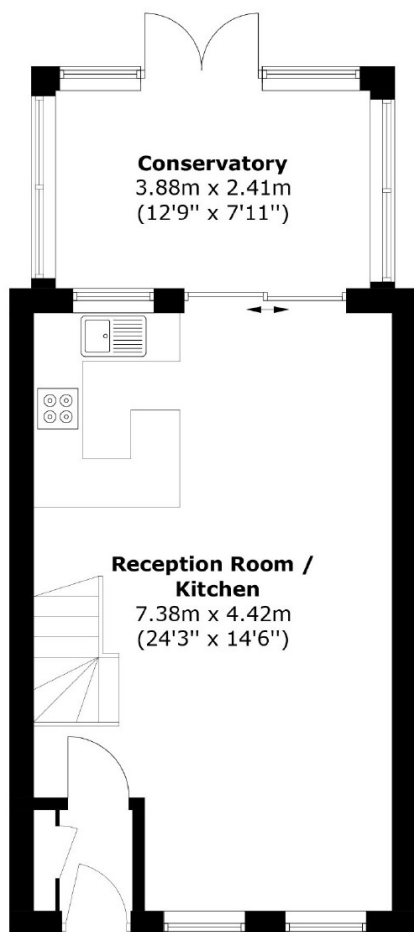


EA2 are delighted to present this exceptional 3-bedroom, three-storey house for sale plus loft room, located in the peaceful, pedestrianised area of West Wapping, just moments from the picturesque canal. This well-appointed home features a generously sized reception room with an open-plan kitchen, providing a contemporary living space. The property comprises three double bedrooms and an additional loft room, ideal for a variety of uses. A stylish bathroom and a convenient cloakroom enhance the functionality of the home. Furthermore, the conservatory leads directly to a private garden. Garage.

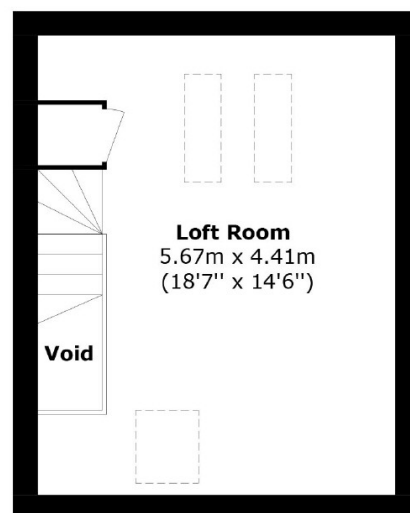
This property is ideally located in central Wapping, offering a wide range of pubs, bars, restaurants, and cafes right on your doorstep. With easy access to St Katharine's Docks, Wapping Overground Station, Tower Hill Stations, and DLR links, commuting to the City, London Bridge, Canary Wharf, or Shoreditch. Buses on the street further enhance accessibility.



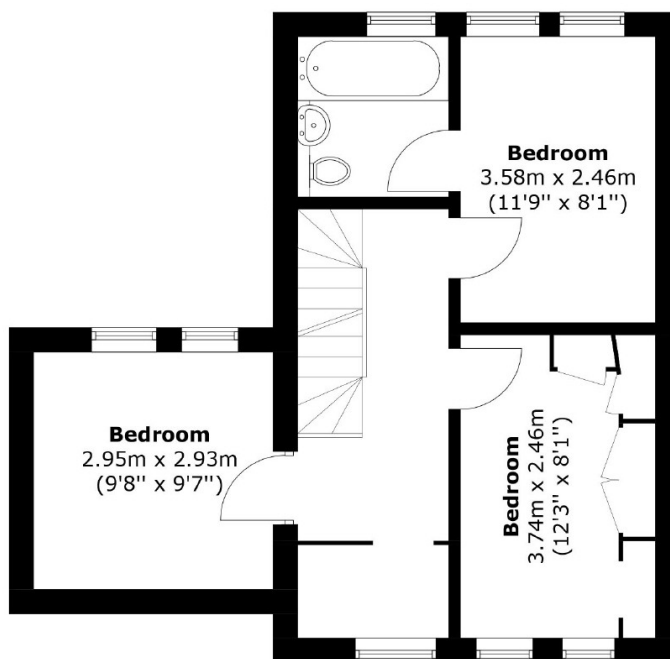




**Ground Floor**



**Second Floor**



**First Floor**

Total area: Approx. 109.7 sq. meters (1,180.7 sq. feet)  
(Excluding Void)

35A Wapping High Street,  
London, E1W 1NR  
020 7665 5589  
ea2group.com