



## Asher Way, E1W

£710,000

 2  1  2  C

- 2-bedroom Duplex Apartment
- 2-bathroom
- 3rd and 4th floors
- Secure gated development
- Private Roof Terrace
- Garage

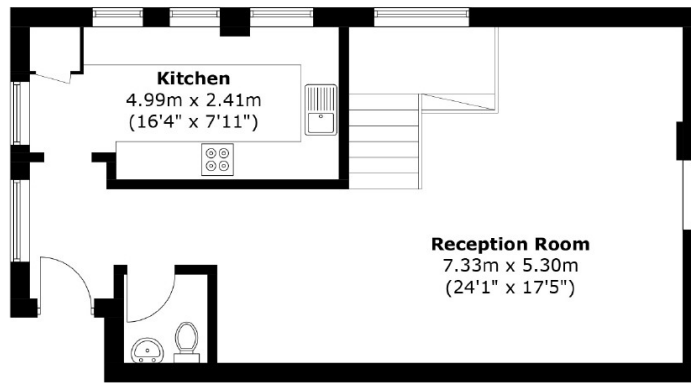


EA2 are delighted to offer this modern 2-bedroom, 2-bathroom duplex apartment, located on the 3rd and 4th floors within a secure, gated development in the sought-after area of West Wapping. The property boasts a separate, fully fitted kitchen, a spacious lounge with floor-to-ceiling windows, and a large roof terrace offering stunning views towards The City and The Shard. Additional benefits include an on-site caretaker and proximity to St Katharine's Dock, Tower Hill Station, Waitrose, and Fitness First. Ideal for those seeking a contemporary living space in a prime location. Garage.

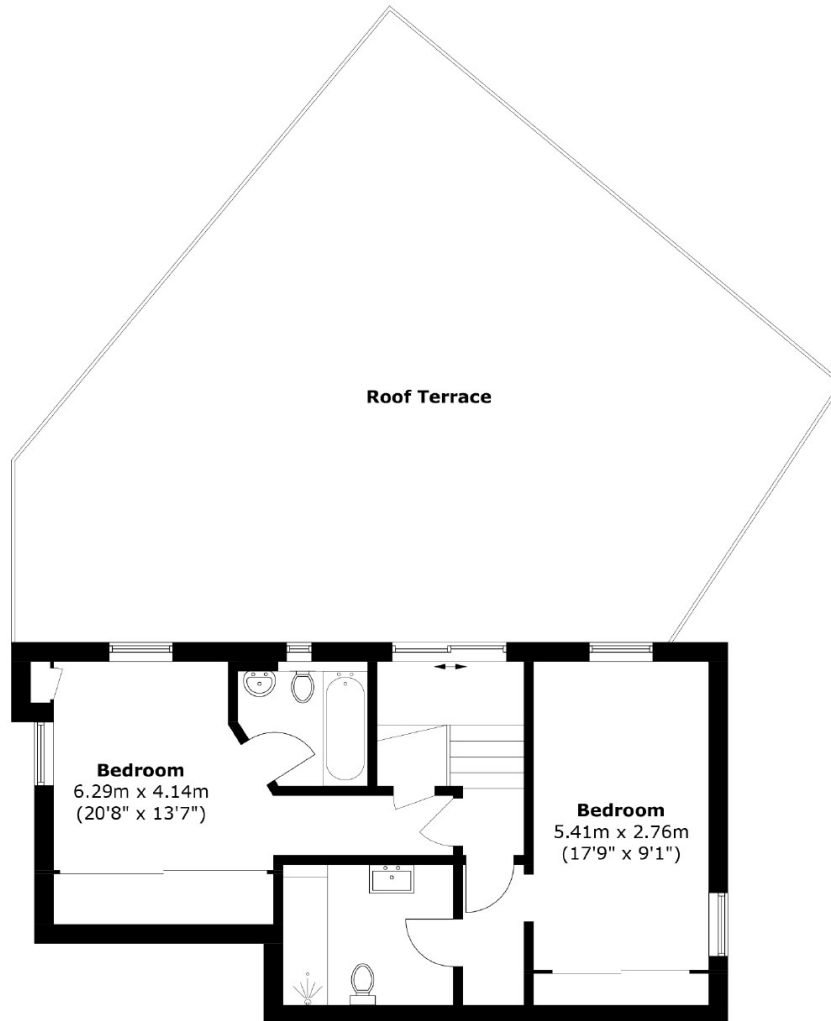
The property is ideally positioned just moments from Tower Bridge and St Katharine's Docks, Transport links are excellent, with Tower Hill, Aldgate, and Wapping stations all within walking distance, as well as easy access to the DLR, Overground, and bus routes, providing swift connections to the City, London Bridge, Canary Wharf, and Shoreditch.







**Fourth Floor**



**Third Floor**

Total area: Approx. 104.8 sq. meters (1,128.1 sq. feet)  
Plus Roof Terrace, approx. 81.9 sq. meters (881.6 sq. feet)

35A Wapping High Street,  
London, E1W 1NR  
020 7665 5589  
ea2group.com