



Thomas More Street, E1W

£2,750,000

 4  2  2  C

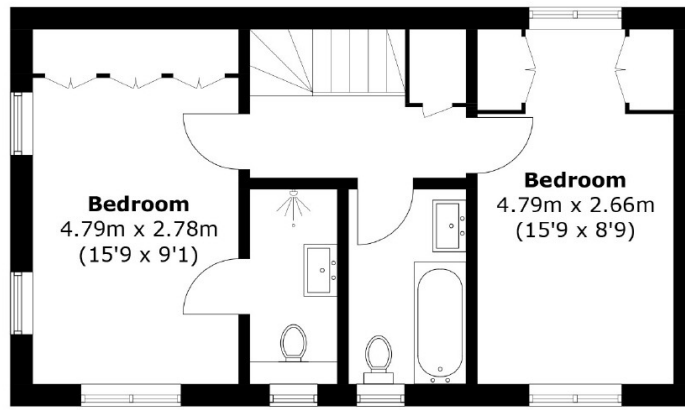
- Rarely Available
- Townhouse
- Four Bedrooms
- Two Bathrooms
- Garden
- Balcony Overlooking the Basin



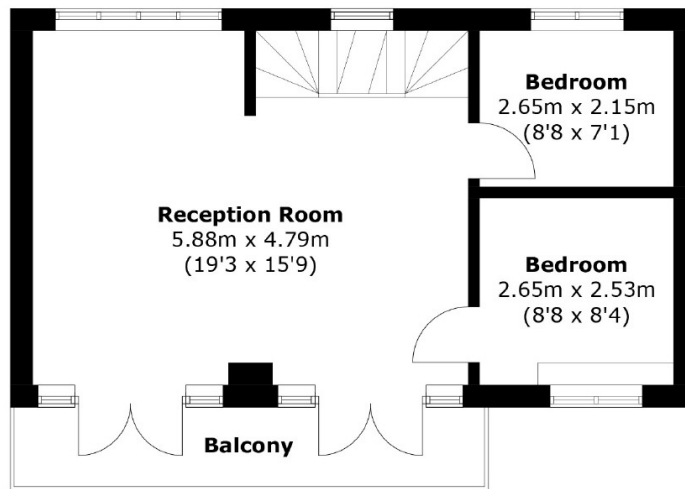
Rarely available Four Bedroom end of terrace Townhouse located on the Hermitage Basin in a picturesque gated development. Open Plan Kitchen, dining and living room making this a great entertaining space. A further reception room leading to a private Balcony with direct basin & river views. A low maintenance Garden. Potential to extend, subject to usual planning permission. Two bathrooms and a ground floor cloakroom. The seller has advised they have a right to park. The development benefits from a daytime porter. Viewing at your earliest convenience is highly recommended so you do not miss out on this unique opportunity.

Ideally situated in West Wapping, the property is within close proximity to Wapping and Tower Hill Stations, with local bus routes offering easy access to Canary Wharf, the City, London Bridge, and Shoreditch. Located approximately 0.3 miles from picturesque St Katharine's Docks that offers a wide selection of pubs, bars, restaurants, and cafes.

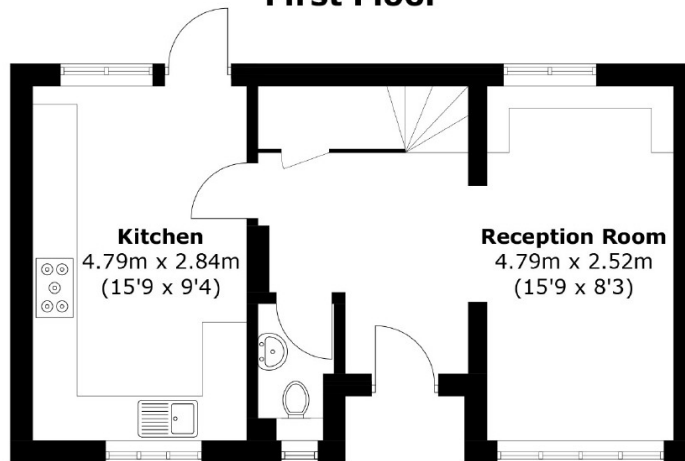




Second Floor



First Floor



Ground Floor

Total area: Approx. 123.0 sq. meters (1,323.9 sq. feet)
Balcony, approx. 6.9 sq. meters (42.0 sq. feet)

35A Wapping High Street,
London, E1W 1NR
020 7665 5589
ea2group.com