



## Cobblestone Square, E1W

£775,000

 2  1  2  C

- 2 Double bedrooms
- Reception area
- 2 Balconies
- 24-hour concierge service
- Private cinema
- Fitness area



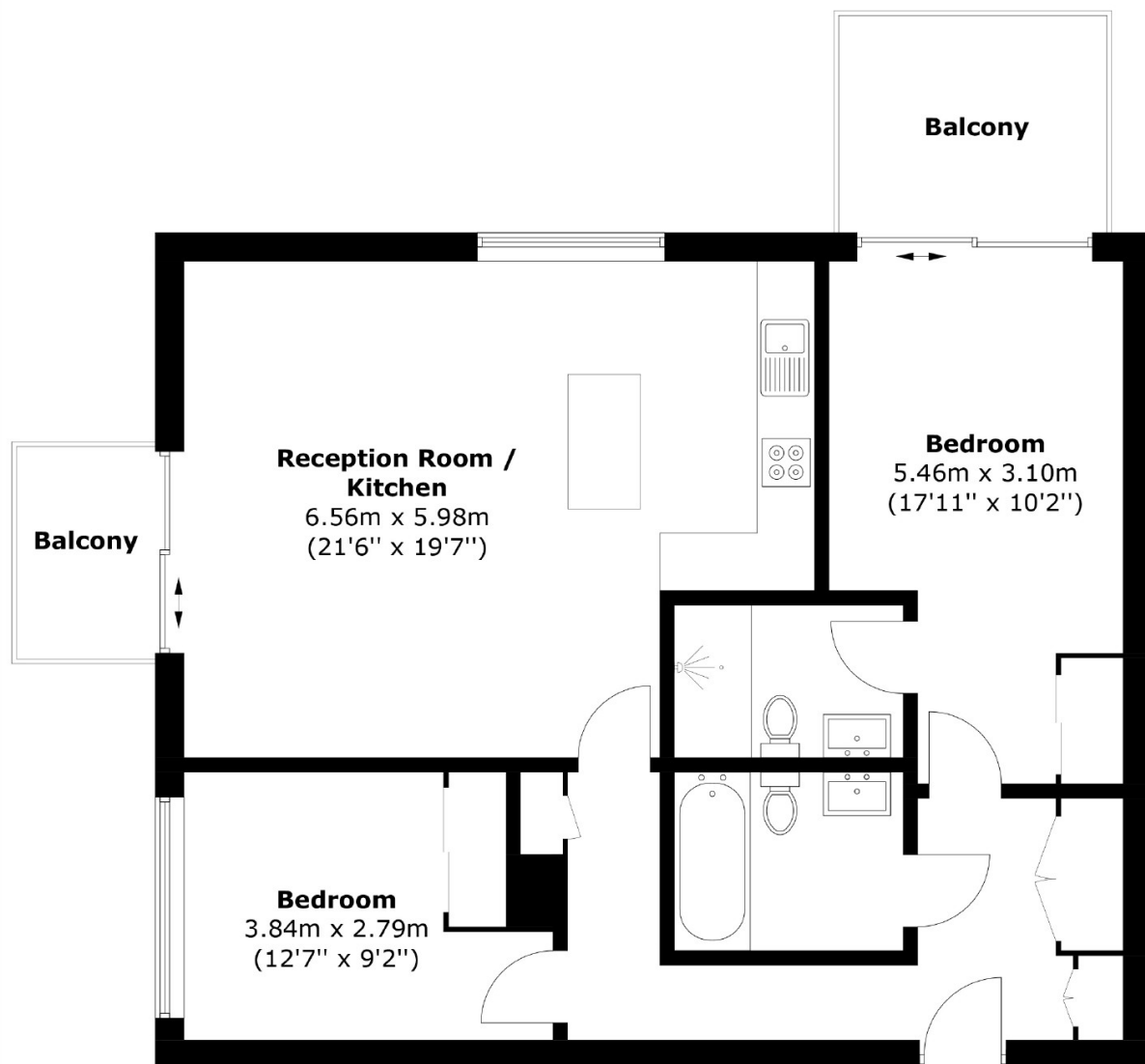


This exceptional residence presents an unparalleled living experience. This 9th floor modern apartment offers two double bedrooms and two contemporary bathrooms,. Open-plan kitchen and reception area, Comfort Cooling system offers a air cooling solution designed to enhance your indoor environment.2 Balconies with breathtaking views of London's iconic skyline. Residents benefit from exclusive access to a range of first-class amenities, including a fitness area, health spa, a luxurious hydro pool, and a private cinema. The building also offers added convenience with a 24-hour concierge service, ensuring peace of mind and attentive care at all times.

This property is ideally situated just moments from the scenic St Katharine Docks, Tower Bridge, the Tower of London, and a Waitrose superstore for convenient shopping. Additionally, both Wapping High Street station and Shadwell station are within a short walking distance, offering excellent transport links for easy access to other parts of London.







Total area: Approx. 80.0 sq. meters (861.1 sq. feet)  
Plus balcony, approx. 9.5 sq. meters (102.2 sq. feet)

35A Wapping High Street,  
London, E1W 1NR  
020 7665 5589  
ea2group.com