



Westferry Road, E14

£495,000

 2  1  2  B

- Modern Apartment
- 12th Floor
- 2 Bedrooms
- 2 Bathroom

- Underground Parking
- 24Hour Concierge
- Residents Gym & Pool
- Tennis Court & Spa

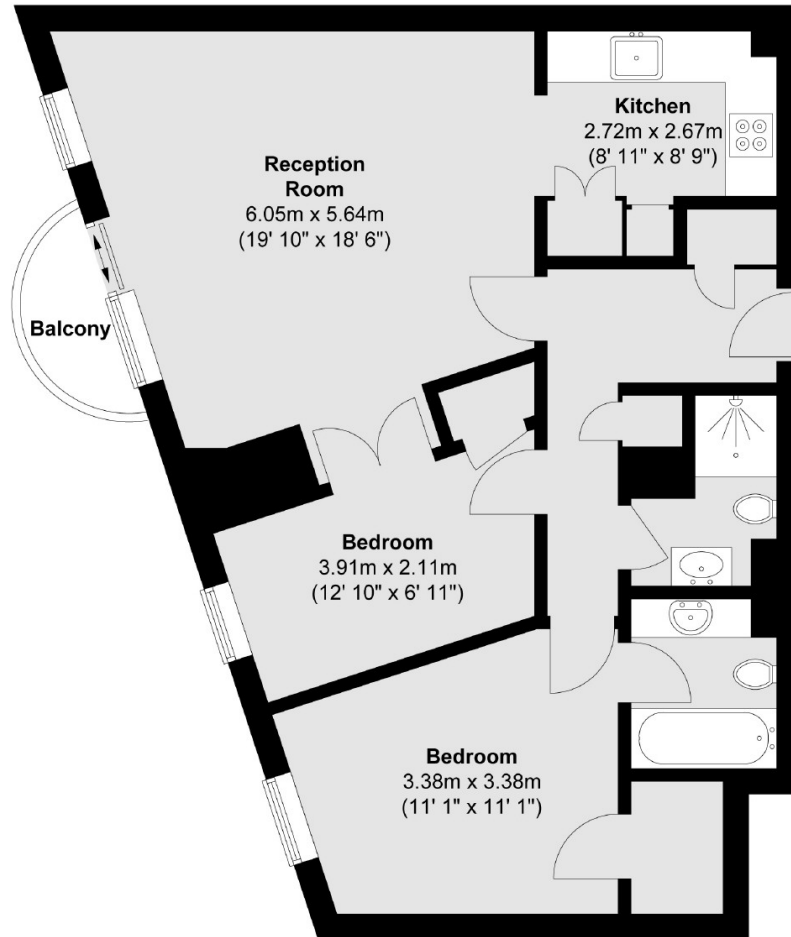


A two-bedroom, two-bathroom apartment on the 12th floor of a secure, popular development. Featuring a open-plan reception with a balcony and a fully integrated kitchen, this property offers modern living in a prime location. The apartment includes a share of the freehold, secure underground parking, and access to excellent amenities such as a 24-hour concierge, residents' gym and pool, and a tennis court and spa. Offered chain-free, this property presents an ideal opportunity for a convenient and luxurious lifestyle.

Ideally located just a short walk from the heart of Canary Wharf, with its wide array of shopping, restaurants, and bars. The property is also conveniently close to the DLR, offering excellent transport links.



Twelfth Floor



Total area (approx.) : 71.5 sq. m (770 sq. ft)
Total balcony area (approx.) : 2.1 sq. m (23 sq. ft)

35A Wapping High Street,
London, E1W 1NR
020 7665 5589
ea2group.com