



Wapping High Street, E1W

£2,400,000

 3  1  3  C

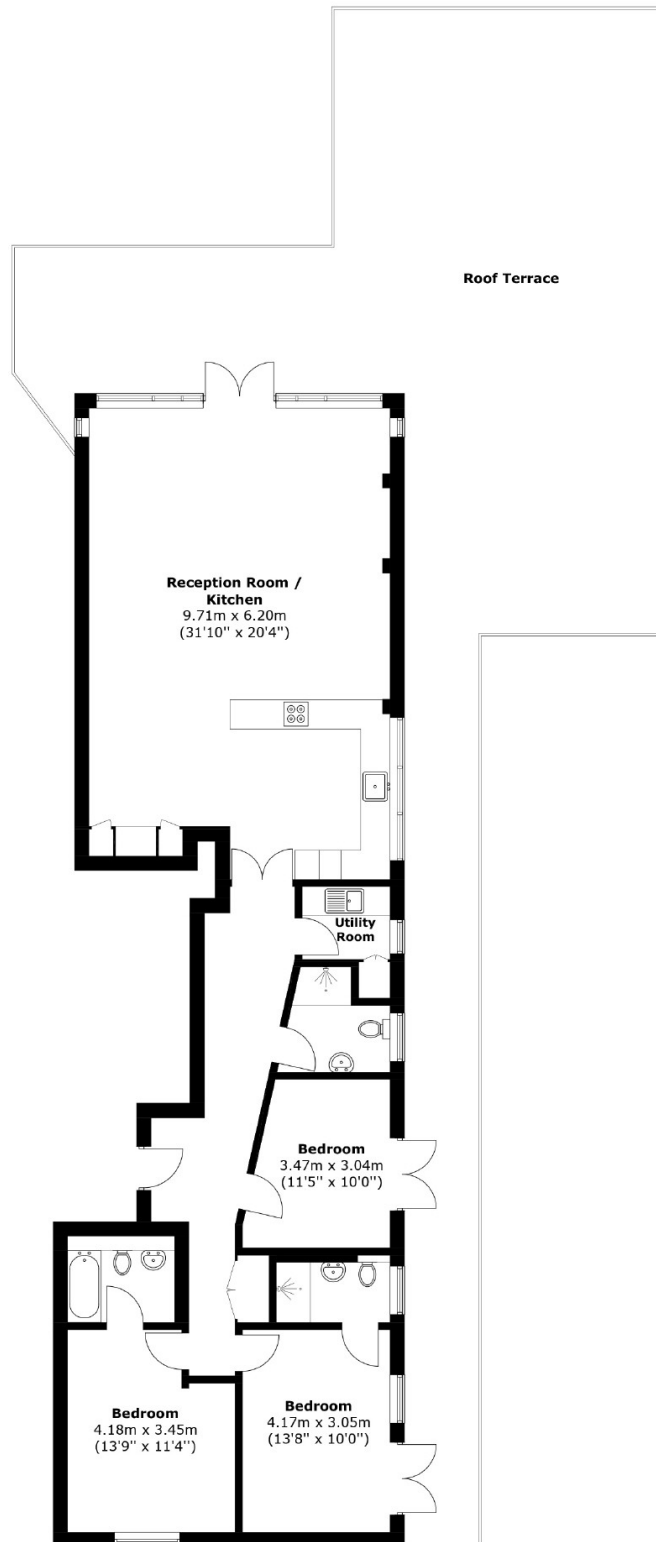
- Breathtaking Views of Tower Bridge
- Expansive South-West Facing Terrace
- Allocated Parking
- 24 Hour Concierge
- The Only Residence on This Floor
- State-of-the-Art German Kitchen



This apartment features meticulously designed interiors, with high-end finishes. Italian-crafted doors, engineered wooden flooring, and floor-to-ceiling windows allowing an abundance of natural light. The state-of-the-art German kitchen is a culinary dream, equipped with top-of-the-line appliances, sleek cabinetry, and elegant worktops. The generously proportioned three bedrooms include a luxurious main suite, complete with an en-suite bathroom and built-in storage. This apartment is in an unmatched development, offering 24/7 concierge service, allocated parking, including a lock-up in the car park, a large outdoor terrace and stunning views of Tower Bridge.

Situated in West Wapping, Cinnabar Wharf allows easy access to the city and Canary Wharf. Nearby St Katharine Docks offers a wide array of restaurants, cafes, and boutique shops, while Tower Bridge and The City are just moments away. Excellent transport links, including Tower Hill Underground Station 0.7 miles away, Wapping Overground Station 0.5 miles away, and the Thames Clipper, provide seamless connections across London.





Total area: Approx. 129.9 sq. meters (1,398.2 sq. feet)
(Excluding Roof Terrace)

Roof terrace, approx. 129.1 sq. meters (1,389.6 sq. feet)

35A Wapping High Street,
London, E1W 1NR
020 7665 5589
ea2group.com