



Thomas More Street, E1W

£360,000

 0  0  1  C

- Studio Apartment
- Garage
- Modern Bathroom

- South Facing Balcony
- Fully Fitted Kitchen
- Chain Free

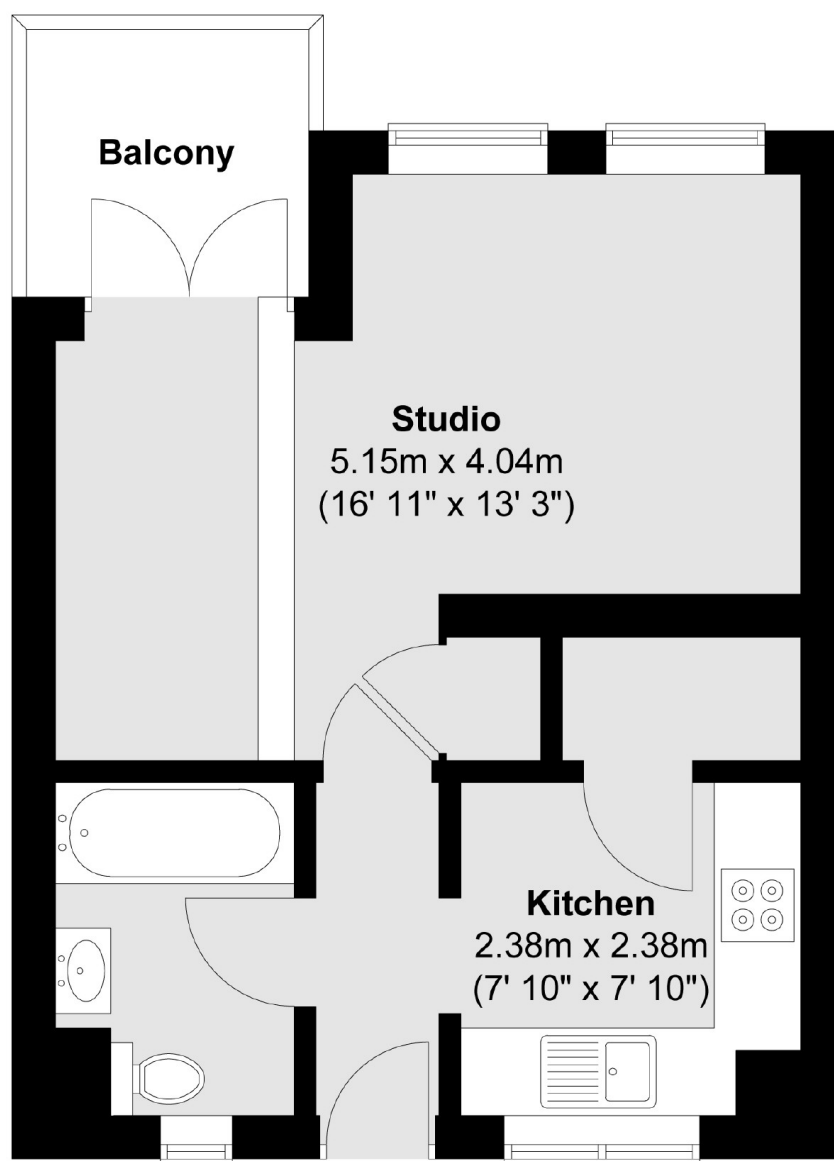


Set in the vibrant neighbourhood of St Katharine's Docks, this stylish, modern studio offers the perfect blend of comfort and convenience. Featuring sleek interiors and large windows that flood the space with natural light. Situated moments from the Thames and the area's trendy cafes, restaurants and shops. Ideal for professionals or those seeking a chic urban lifestyle.

This property boasts an enviable location with exceptional transport links nearby. Tower Hill Underground Station and Tower Gateway DLR Station are both within 0.3 miles. Commuting to the City, Canary Wharf, and beyond is effortless, offering the perfect blend of convenience and a vibrant lifestyle near the iconic St Katharine Docks.



Second Floor



Total area (approx.) : 31.6 sq. m (340 sq. ft)
Total balcony area (approx.) : 3.2 sq. m (34 sq. ft)

35A Wapping High Street,
London, E1W 1NR
020 7665 5589
ea2group.com