



## Waterman Way, E1W

£285,000

 0  1  1  D

- Amazing Views of the City
- Garage
- West Wapping Location
- Loft Access
- Fully Fitted Kitchen
- Chain Free



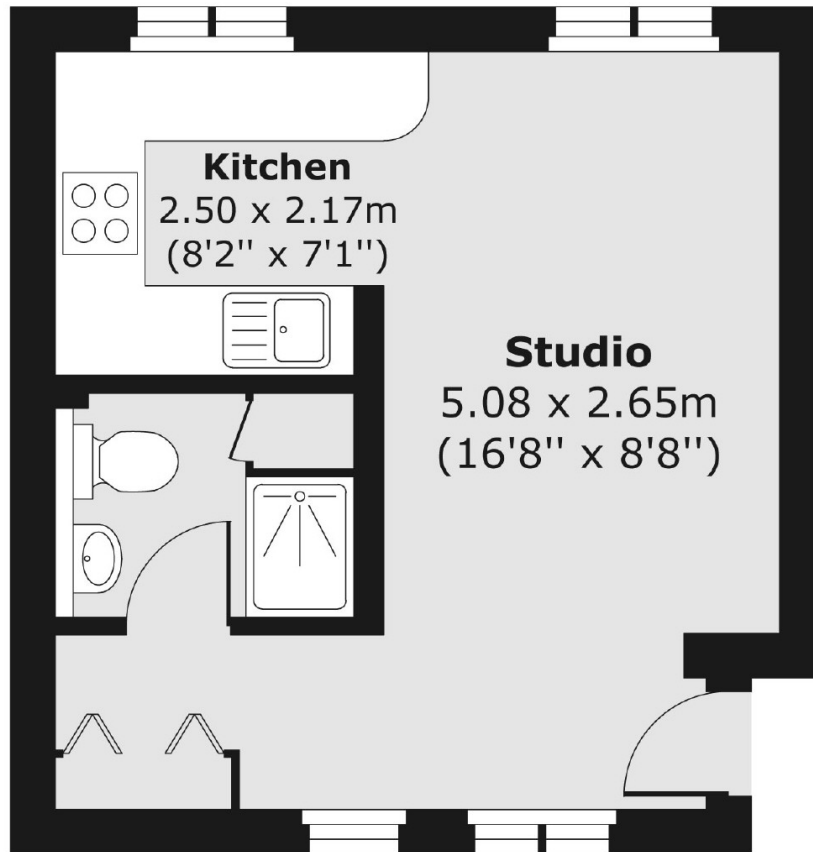
This cosy studio offers a smart, open layout with modern finishes, ideal for first-time buyers looking to step onto the property ladder or savvy investors seeking strong rental potential. Conveniently located near key amenities, public transport, and vibrant city life, this low-maintenance gem is a fantastic opportunity not to be missed!

Limehouse DLR and National Rail Station is just 0.4 miles away, offering direct connections to Canary Wharf, Bank, and beyond. Shadwell Overground and DLR Station is located 0.7 miles, providing links to East London and central destinations.





## First Floor



Total area (approx.) 24.06 sq. m (259 sq. ft)

35A Wapping High Street,  
London, E1W 1NR  
020 7665 5589  
[ea2group.com](http://ea2group.com)