



Valencia Close, E14

£475,000

 2  1  2 

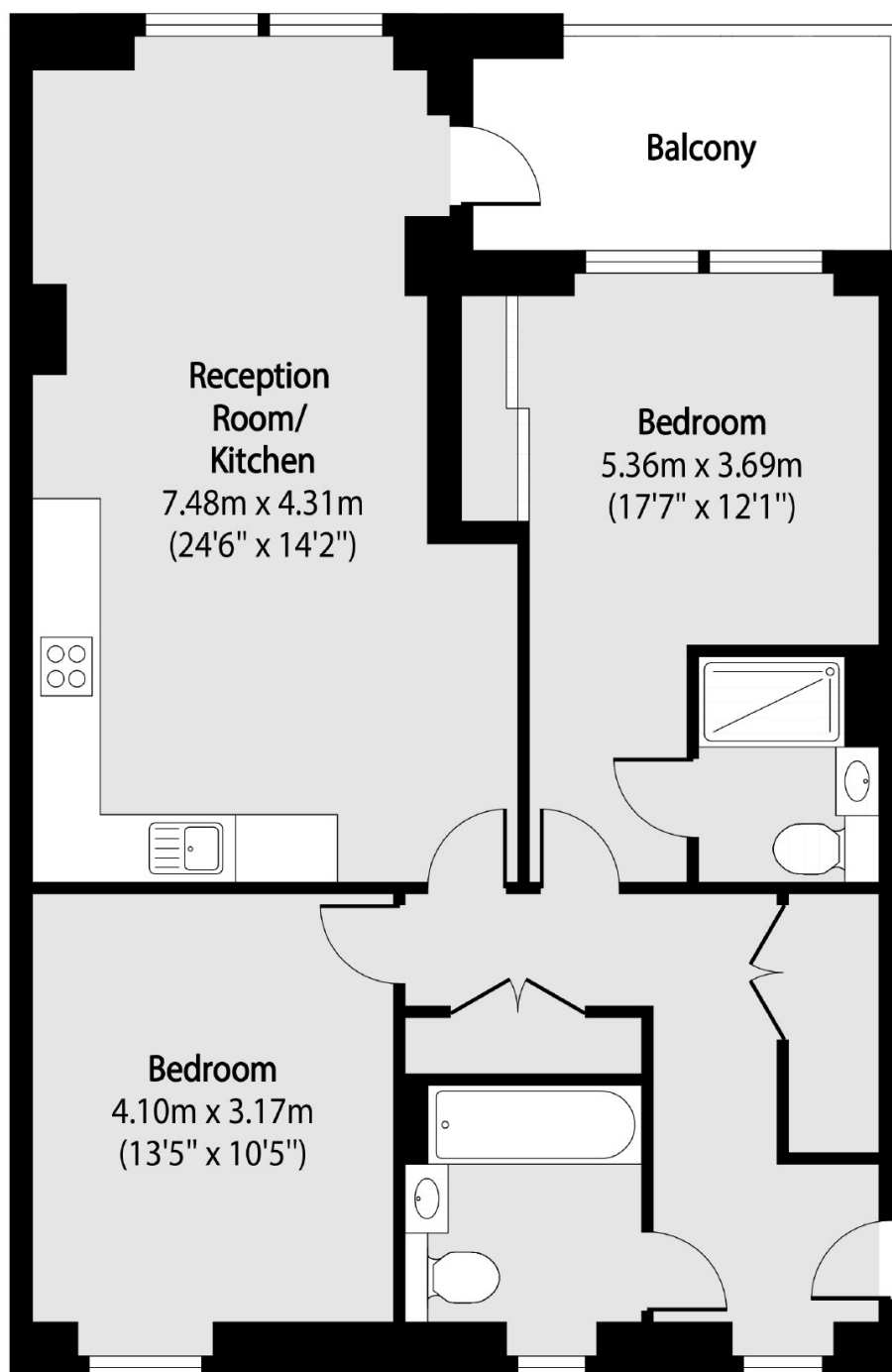
- Modern Built Apartment
- 2 Double Bedrooms
- Reception
- Fitted Kitchen
- 2 Bathrooms
- Near to Canary Wharf Stations



EA2 are pleased to offer for sale this modern apartment located near Canary Wharf. The apartment comprises of a spacious reception room with a balcony. An open-plan, fully fitted kitchen. Two well-proportioned double bedrooms. Two contemporary bathrooms. Double glazing throughout. The apartment is conveniently positioned within easy reach of Canary Wharf stations and local bus routes, providing excellent transport connections.

Within close proximity to Canary Wharf (Elizabeth Line) station, East India DLR, Blackwall DLR, Allsints DLR, Canning Town DLR Station & Canning Town Tube station.





Total area (approx): 78.45 sq m (844 sq. ft)

Balcony total area (approx): 6.87 sq m (74 sq. ft)

35A Wapping High Street,
London, E1W 1NR
020 7702 3456
ea2group.com