



## St. Katharines Way, E1W

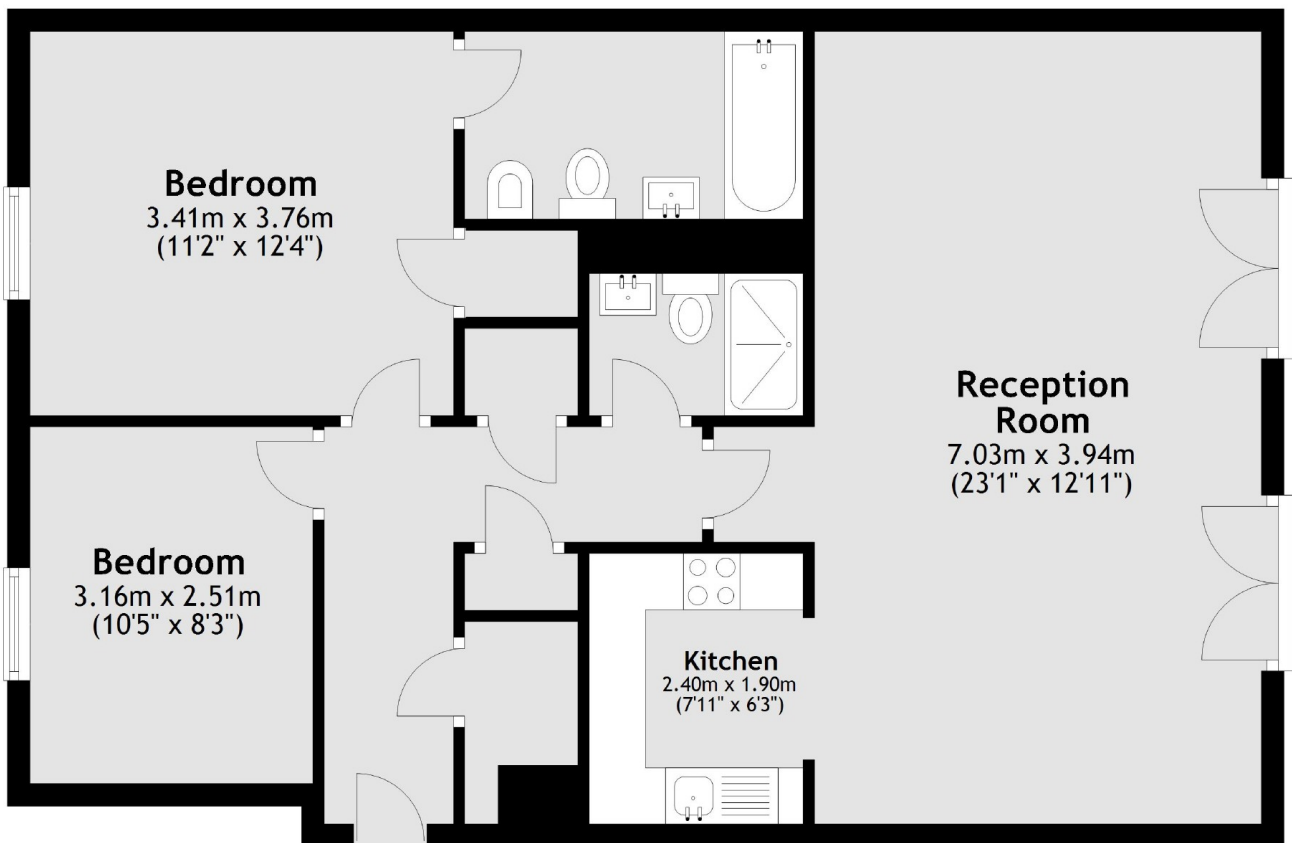
£692 pcm

Amazing two bedroom two bathroom apartment located on the first floor of this highly sought-after Riverside development in West Wapping. The apartment proposed furnished is available for immediate occupancy and offers panoramic views of Tower Bridge and the Thames. Secure underground parking is available on request. Energy Rating: C.

Ideally located close to St Katharine's Docks with a wide selection of pubs, bars, restaurants and cafes nearby. Tower Hill stations, DLR links, Wapping Overground Station, and local bus routes providing an easy access to the City, London Bridge, Canary Wharf or Shoreditch.

Two Double Bedrooms, Two Bathrooms, Direct River Views, 24/7 Concierge Service, Private Parking, Wapping

## Third Floor



Total area: approx. 75.9 sq. metres (817.3 sq. feet)

ea2  
35A Wapping High Street,  
London, E1W 1NR  
020 7702 3456  
lettings@ea2group.com

Energy Rating: C We aim to make our particulars both accurate and reliable. However they are not guaranteed; nor do they form part of an offer or contract. If you require clarification on any points then please contact us, especially if you're travelling some distance to view. Please note that appliances and heating systems have not been tested and therefore no warranties can be given as to their good working order.