

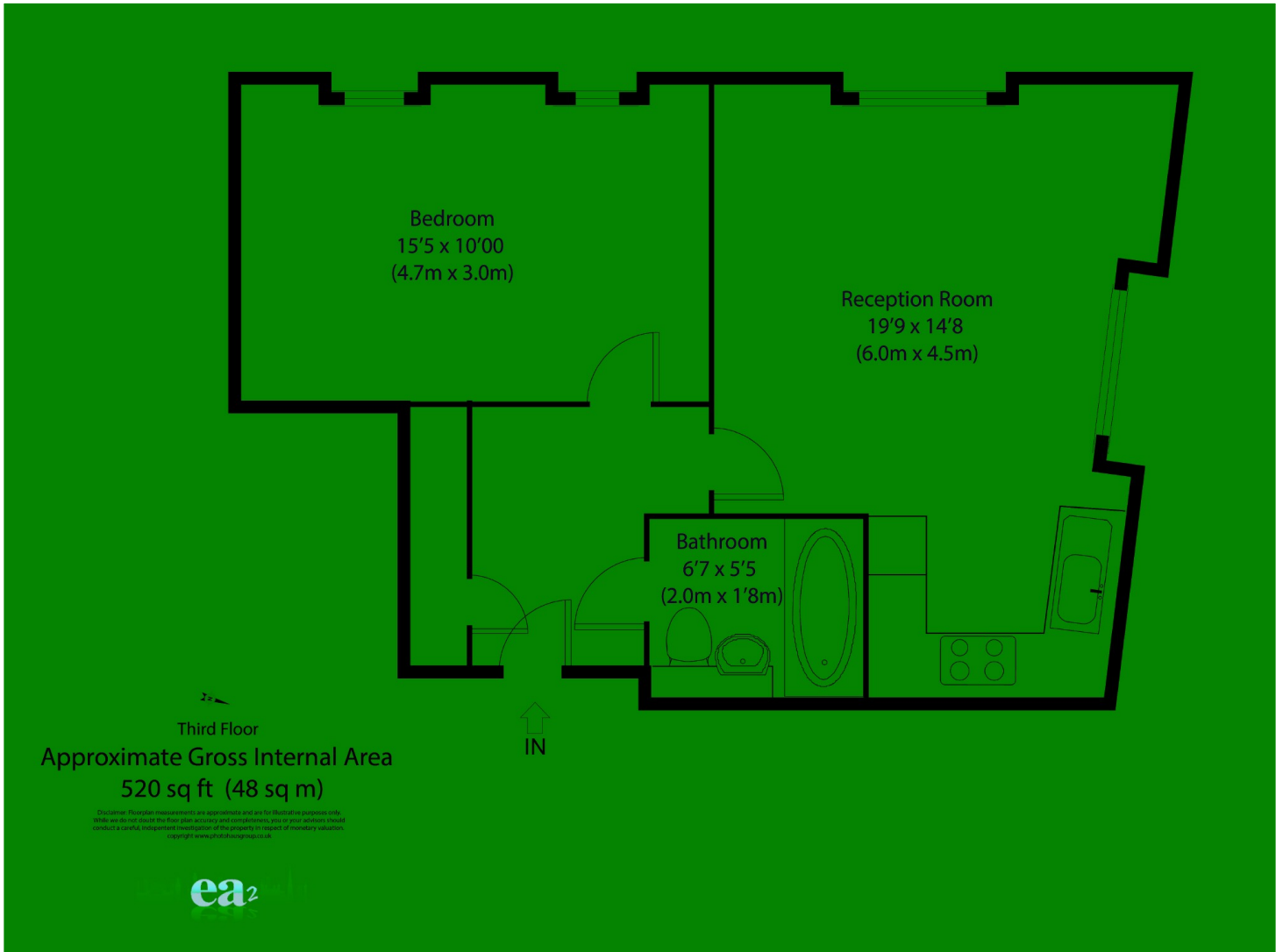
## Royal Mint Street, E1

£475,000

A recently renovated one bedroom top floor apartment in Tower Hill. The property has been finished to a high standard, has an open plan reception with Hacker fitted kitchen, direct city views, storage cupboard and a communal garden. Energy Rating: C.

Located close to St Katharine's Docks and Waitrose' supermarket nearby. Tower Hill stations and local bus routes are also within easy reach for access to the City and Canary Wharf.

One Bedroom, Share of Freehold, Communal Garden, Bike Storage, Transport Link, Chain Free



ea2  
35a Wapping High Street,  
London, E1W 1NR  
020 7702 3456  
sales@ea2group.com

Energy Rating: C We aim to make our particulars both accurate and reliable. However they are not guaranteed; nor do they form part of an offer or contract. If you require clarification on any points then please contact us, especially if you're travelling some distance to view. Please note that appliances and heating systems have not been tested and therefore no warranties can be given as to their good working order.

ea2group.com