

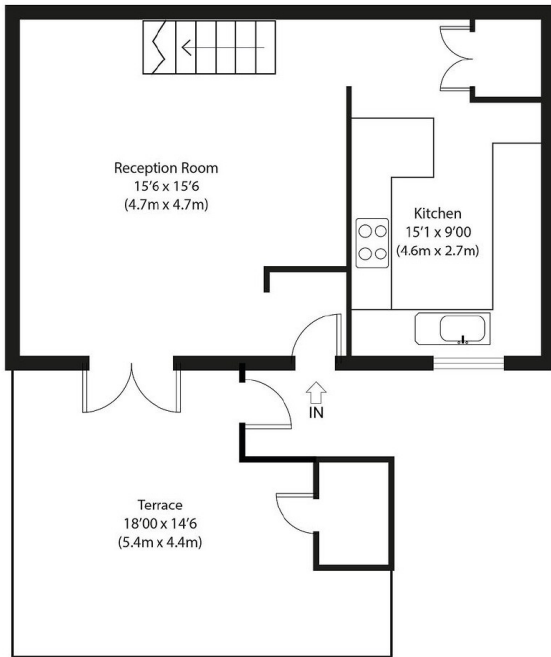
Burr Close, E1W

£565,000

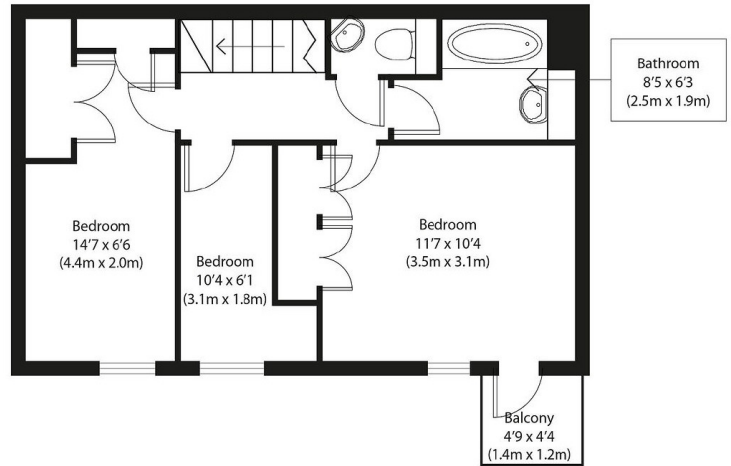
A three bedroom apartment with a private garden within the sought after South Quay Development in St Katharine's Docks. The property has a large reception room leading onto the private garden, a separate fitted kitchen with a breakfast area and a modern bathroom. Energy Rating: C.

Amenities include many bars, restaurants and Friday market. Tower Hill station, DLR links, Wapping Overground Station, and buses right around the corner for an easy access to the City, London Bridge, Canary Wharf or Shoreditch.

Three Bedrooms, Separate Kitchen, Private Garden, Modern Bathroom, Transport Links, St Katherine's Docks



Upper Ground Floor



First Floor

Approximate Gross Internal Area
845 sq ft (79 sq m)

Disclaimer: Floorplan measurements are approximate and are for illustrative purposes only. While we do not doubt the floorplan accuracy and completeness, you or your advisors should conduct a careful, independent investigation of the property in respect of monetary valuation. copyright www.photolustgroup.co.uk