



Wapping High Street, E1W

£900,000

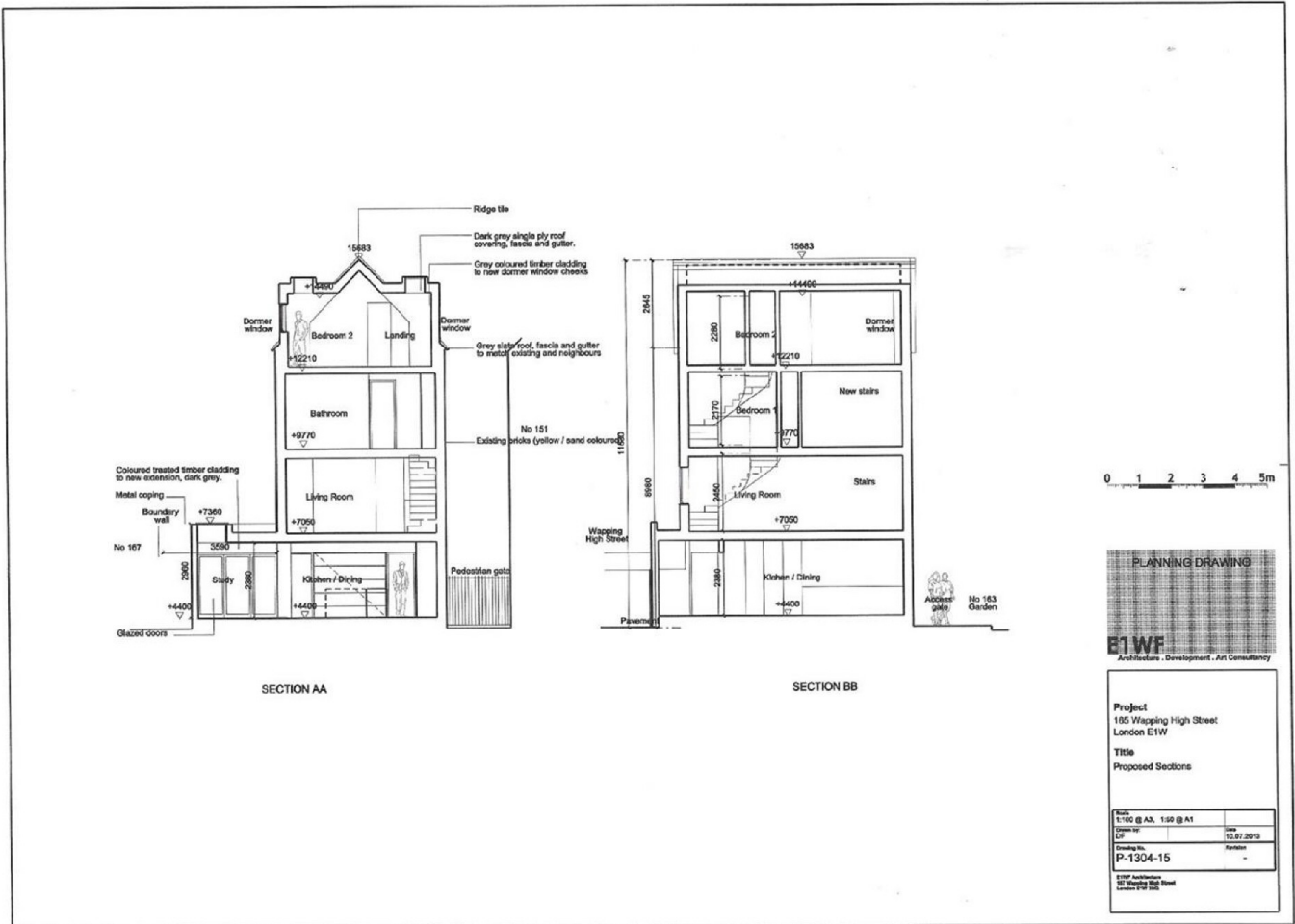
A larger than average one bedroom apartment boasting 850 sq.ft on living space on the fourth floor with a south facing balcony offering river views. Residents benefit from a 24-hour concierge, gym and parking. Energy Rating: C.

Ideally located close to St Katharine's Docks and Tower Hill stations. Close to all local amenities and walking distance from the City and Canary Wharf. Amazing Views of the River Thames and towards Tower Bridge.

One Bedroom, Laminate Wood Floorings, Fitted Wardrobes, South Facing Balcony, River Views, Chain Free







ea2
35A Wapping High Street,
London, E1W 1NR
020 7702 3456
sales@ea2group.com

Energy Rating: C We aim to make our particulars both accurate and reliable. However they are not guaranteed; nor do they form part of an offer or contract. If you require clarification on any points then please contact us, especially if you're travelling some distance to view. Please note that appliances and heating systems have not been tested and therefore no warranties can be given as to their good working order.