



ea²

020 7702 3456
enquiries@ea2group.com
www.ea2group.co.uk

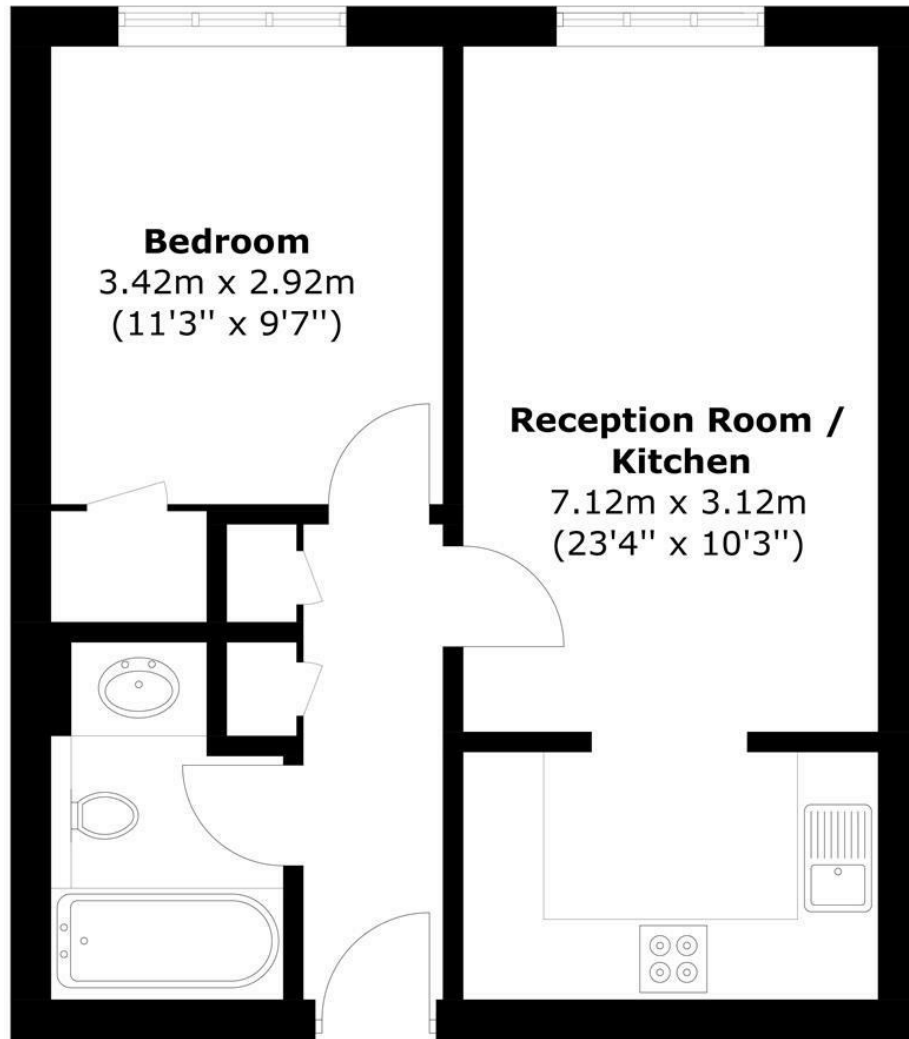
35a Wapping High Street, Wapping, London E1W 1NR



Hermitage Court
Wapping, E1W


- One Bedroom Apartment
- Modern Kitchen
- Allocated Parking Space
- Easy Access to the City, Canary Wharf, London Bridge or Shoreditch
- Daytime Porter and Communal Courtyard

£440,000



Total area: Approx. 44.0 sq. meters (473.6 sq. feet)

Energy Efficiency Rating

	Current	Potential
<i>Very energy efficient - lower running costs</i>		
(92 plus) A		
(81-91) B	80	81
(69-80) C		
(55-68) D		
(39-54) E		
(21-38) F		
(1-20) G		
<i>Not energy efficient - higher running costs</i>		
England & Wales	EU Directive 2002/91/EC 	



ea2 Ltd have prepared these sales particulars as a general guide only. ea2 Ltd have not carried out a detailed survey, nor tested any services, appliances or fittings. Information regarding the length of lease, ground rent and service charge is provided by the seller and believed to be correct. Any purchaser is strongly advised to obtain verification from their legal advisor or surveyor.