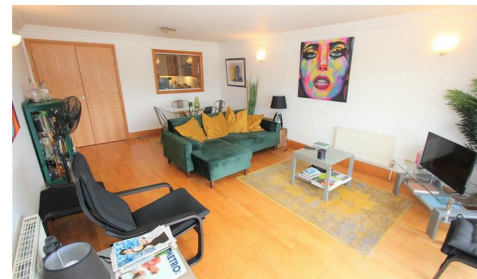




020 7702 3456
enquiries@ea2group.com
www.ea2group.co.uk

35a Wapping High Street, Wapping, London E1W 1NR



Energy Efficiency Rating		
	Current	Potential
Very energy efficient - lower running costs		
(92 plus) A		
(81-91) B		
(69-80) C		
(55-68) D		
(39-54) E		
(21-38) F		
(1-20) G		
Not energy efficient - higher running costs		
	77	81
England & Wales	EU Directive 2002/91/EC	



Capital Wharf
Wapping
E1W
£700 Per Week

ea2 are pleased to offer to rent this 2 Double Bedroom Apartment with a large Terrace on the first floor of this exclusive and popular Riverside development in West Wapping. The apartment comprises of a large Reception leading to a South facing Terrace with amazing views of the River, Tower Bridge and The Shard, a separated fully fitted Kitchen, 2 Double Bedrooms with ensuite Bathrooms and fitted wardrobes, and a additional guest cloakroom. The building further benefits from 24h Concierge, a Residents Gym and a Secure Underground Parking. Ideally located near Tower Hill Stations, close to the St Katharine's Docks with a wide selection of bars, restaurants and cafes nearby. Local amenities to include 'Waitrose' supermarket and a parade of shops on Wapping Lane. Only a short walk from Tower Hill Stations, DLR links, Wapping Overground Station, and buses on the street for an easy access to the City, London Bridge, Canary Wharf or Shoreditch. Available on 24/08/2024.

ea2 Ltd have prepared these sales particulars as a general guide only. ea2 have not carried out a detailed survey, nor tested any services, appliances or fittings. Information regarding the length of lease, ground rent and service charge is provided by the seller and believed to be correct. Any purchaser is strongly advised to obtain verification from their legal advisor or surveyor.