



ea²

020 7702 3456
enquiries@ea2group.com
www.ea2group.co.uk

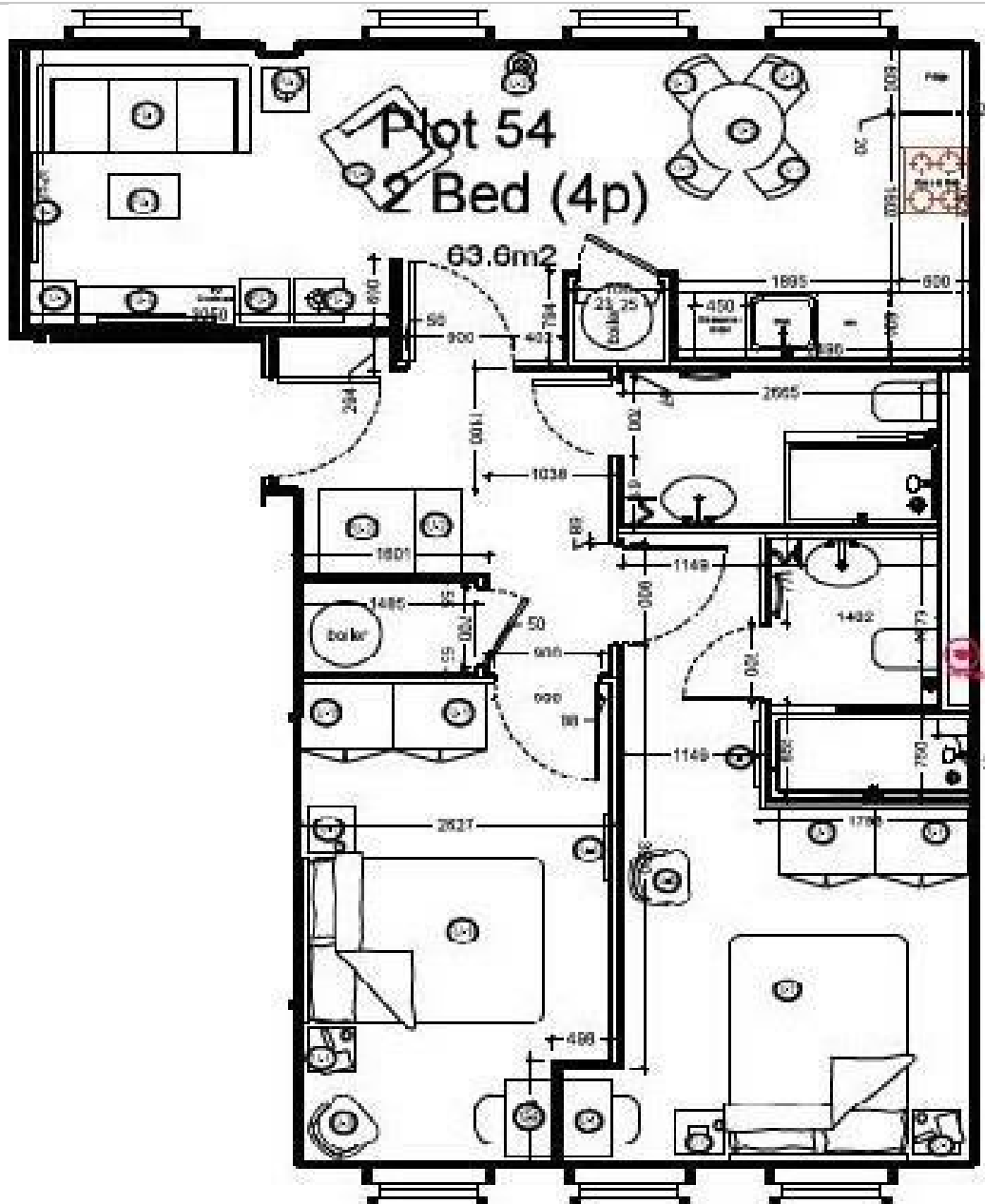
35a Wapping High Street, Wapping, London E1W 1NR




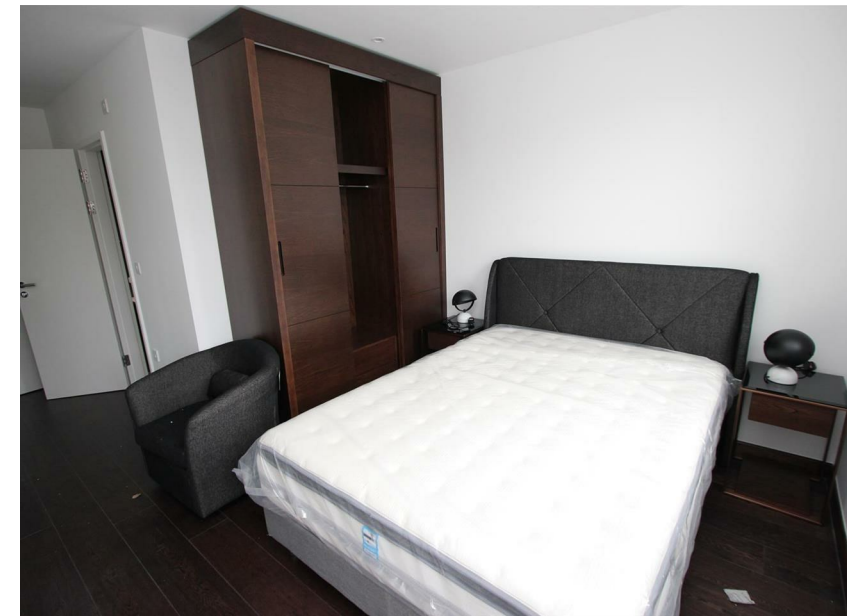
King Henry Terrace
Wapping, E1W

- New Build Apartment Part or Furnished
- 2 Bedrooms
- Reception
- Fitted Kitchen
- 3 Piece Bathroom Suite

£485 Per
Week



Energy Efficiency Rating		
	Current	Potential
<i>Very energy efficient - lower running costs</i>		
(92 plus) A		
(81-91) B		
(69-80) C	65	65
(55-68) D		
(39-54) E		
(21-38) F		
(1-20) G		
<i>Not energy efficient - higher running costs</i>		
England & Wales	EU Directive 2002/91/EC 	



ea2 Ltd have prepared these sales particulars as a general guide only. ea2 Ltd have not carried out a detailed survey, nor tested any services, appliances or fittings. Information regarding the length of lease, ground rent and service charge is provided by the seller and believed to be correct. Any purchaser is strongly advised to obtain verification from their legal advisor or surveyor.