



ea²

020 7702 3456
enquiries@ea2group.com
www.ea2group.co.uk

35a Wapping High Street, Wapping, London E1W 1NR



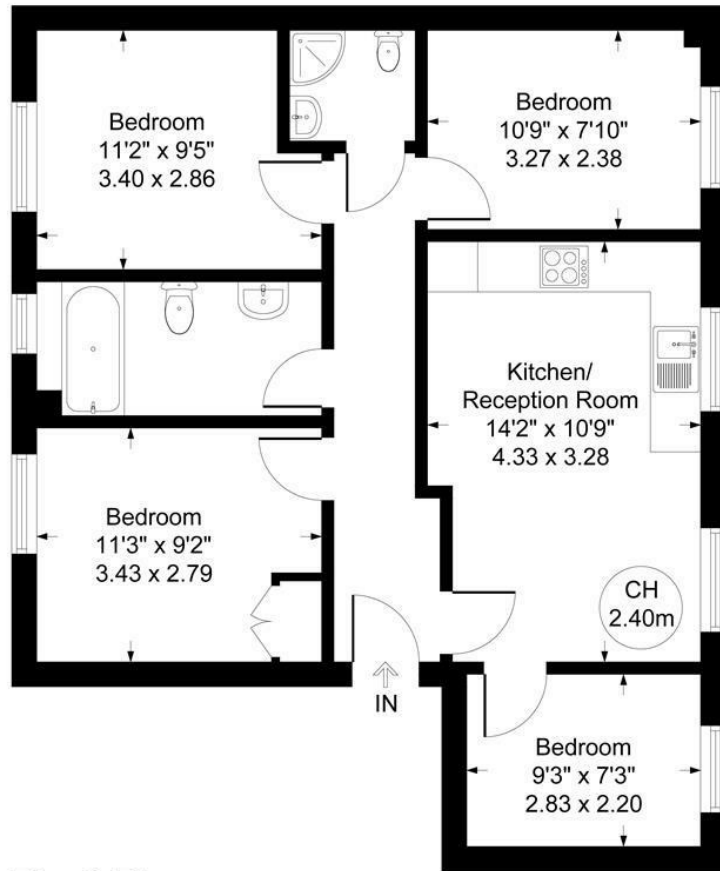
Redmans Road
Stepney Green, E1

- Modern Built 1st Floor Apartment
- 4 Bedrooms
- 2 Bathrooms
- Open Plan Lounge and Fitted Kitchen
- Communal Garden

£630,000


Redmans Road, Stepney Green, E1
 Approximate Gross Internal Area = 714 sq ft / 66.29 sq m

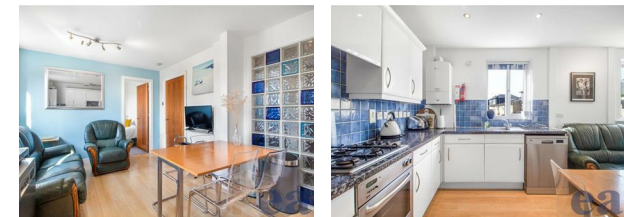
CH = Ceiling Height



First Floor

Illustration for identification purposes only, measurements are approximate, not to scale. (ID230)

| Energy Efficiency Rating | | |
|---|---|-----------|
| | Current | Potential |
| Very energy efficient - lower running costs | | |
| (92 plus) A | | |
| (81-91) B | | |
| (69-80) C | 75 | 77 |
| (55-68) D | | |
| (39-54) E | | |
| (21-38) F | | |
| (1-20) G | | |
| Not energy efficient - higher running costs | | |
| England & Wales | EU Directive 2002/91/EC  | |



ea2 Ltd have prepared these sales particulars as a general guide only. ea2 Ltd have not carried out a detailed survey, nor tested any services, appliances or fittings. Information regarding the length of lease, ground rent and service charge is provided by the seller and believed to be correct. Any purchaser is strongly advised to obtain verification from their legal advisor or surveyor.