



ea<sup>2</sup>

020 7702 3456  
enquiries@ea2group.com  
www.ea2group.co.uk

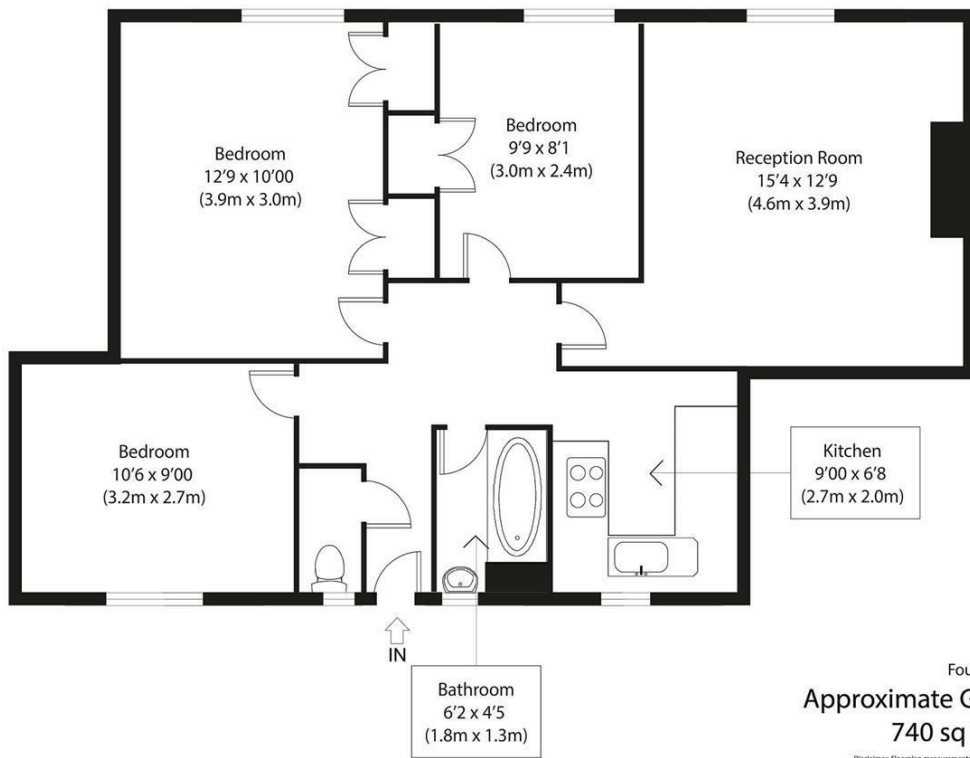
35a Wapping High Street, Wapping, London E1W 1NR



Whitethorn House  
Wapping, E1W

- Fourth Floor Apartment
- Three Double Bedrooms
- Fully Fitted Separate Kitchen
- Modern Bathroom
- Separate WC

£425,000



Fourth Floor

Approximate Gross Internal Area  
740 sq ft (69 sq m)

Disclaimer: Floorplan measurements are approximate and are for illustrative purposes only. While we do not doubt the floor plan accuracy and completeness, you or your advisors should conduct a careful, independent investigation of the property in respect of monetary valuation. copyright www.ojphoto.co.uk



### Energy Efficiency Rating

	Current	Potential
Very energy efficient - lower running costs		
(92 plus) <b>A</b>		
(81-91) <b>B</b>		
(69-80) <b>C</b>		
(55-68) <b>D</b>	<b>62</b>	<b>66</b>
(39-54) <b>E</b>		
(21-38) <b>F</b>		
(1-20) <b>G</b>		
Not energy efficient - higher running costs		
<b>England &amp; Wales</b>	EU Directive 2002/91/EC	



ea2 Ltd have prepared these sales particulars as a general guide only. ea2 Ltd have not carried out a detailed survey, nor tested any services, appliances or fittings. Information regarding the length of lease, ground rent and service charge is provided by the seller and believed to be correct. Any purchaser is strongly advised to obtain verification from their legal advisor or surveyor.