

14 Moscow Road East, Edgeley, Stockport, Cheshire, SK3 9QL

Hibbert Homes are delighted to offer This **LARGER THAN AVERAGE** Three Bedroomed Victorian Mid-Terraced Property, pleasantly overlooks Sykes' reservoir and boasts Excellent Transport Links within close proximity for those needing to commute, as well as an Array of Amenities close by.

The accommodation briefly comprises: Entrance into Hallway and through into a Lounge to the front, with a Second Separate Reception Room to the rear, separated by Glazed French Doors. Beyond is a Fully Fitted Kitchen with integral oven, hob and extractor. Stairs lead from the Dining Room to a Basement Cellar providing Valuable Additional Storage. To the first floor is Two Double Bedrooms to the front, and a Third Large Single Bedroom/ Home Office to the rear, alongside a Family Bathroom with Shower above the bath.

Externally, there is a Small Walled Garden to the front with Ample On-Street Parking available. To the rear is a Low Maintenance Fully Decked Garden. The property is offered on an Unfurnished Basis.

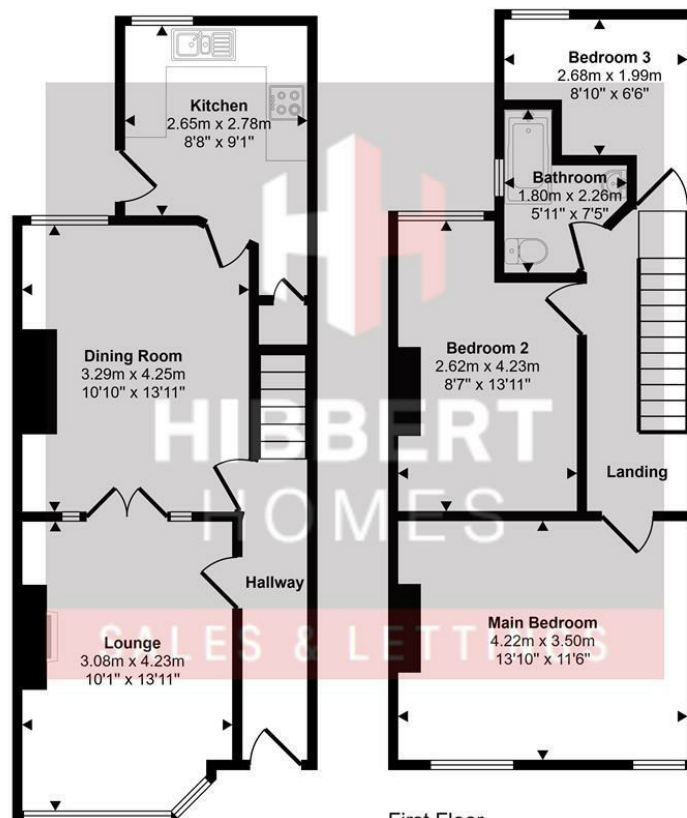
Council Tax Band- B.

EPC Grade- C.

Available From - 11th December 2025

£1,350 PCM

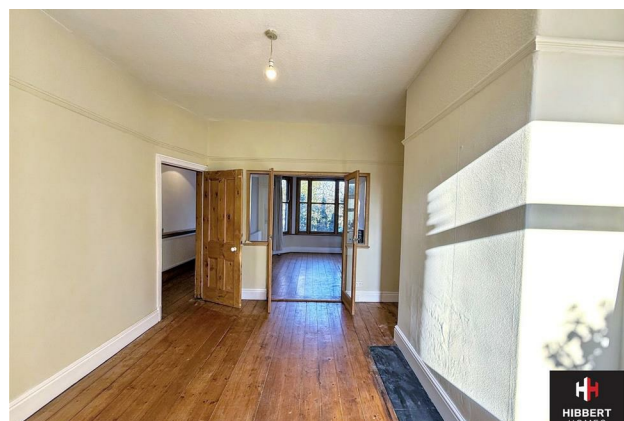
Approx Gross Internal Area
84 sq m / 899 sq ft



First Floor
Approx 41 sq m / 443 sq ft

Ground Floor
Approx 42 sq m / 456 sq ft

This floorplan is only for illustrative purposes and is not to scale. Measurements of rooms, doors, windows, and any items are approximate and no responsibility is taken for any error, omission or mis-statement. Icons of items such as bathroom suites are representations only and may not look like the real items. Made with Made Snappy 360.



Energy Efficiency Rating		
	Current	Potential
Very energy efficient - lower running costs		
(92 plus) A		
(81-91) B		
(69-80) C		
(55-68) D		
(39-54) E		
(21-38) F		
(1-20) G		
Not energy efficient - higher running costs		
England & Wales	EU Directive 2002/91/EC	

Environmental Impact (CO ₂) Rating		
	Current	Potential
Very environmentally friendly - lower CO ₂ emissions		
(92 plus) A		
(81-91) B		
(69-80) C		
(55-68) D		
(39-54) E		
(21-38) F		
(1-20) G		
Not environmentally friendly - higher CO ₂ emissions		
England & Wales	EU Directive 2002/91/EC	