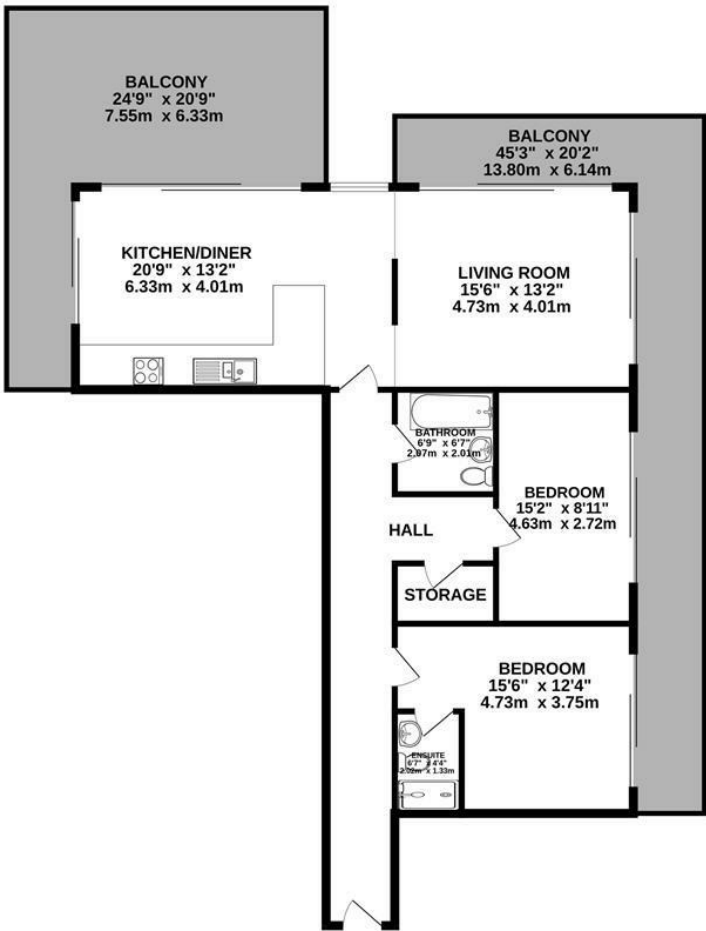
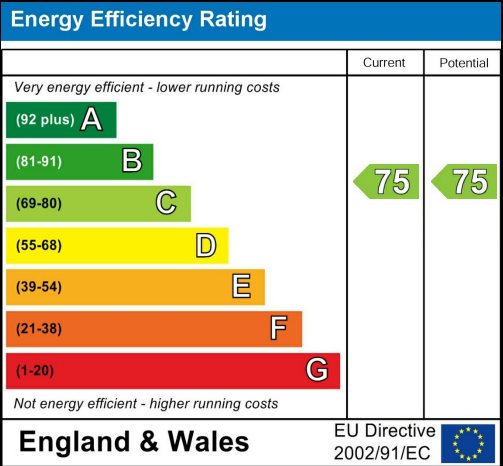


GROUND FLOOR  
1059 sq.ft. (98.4 sq.m.) approx.



TOTAL FLOOR AREA: 1059 sq.ft. (98.4 sq.m.) approx.  
Whilst every attempt has been made to ensure the accuracy of the floorplan contained here, measurements of doors, windows, rooms and any other items are approximate and no responsibility is taken for any error, omission or mis-statement. This plan is for illustrative purposes only and should be used as such by any prospective purchaser. The services, systems and appliances shown have not been tested and no guarantee as to their operability or efficiency can be given.  
Made with Metropix ©2023



Ordsall Lane |  
Asking Price £600,000



21 Bramhall Lane South | Bramhall | SK7 1AL  
t: 0161 480 0099  
e: enquiries@hibberthomes.com  
www.hibberthomes.com

Bedrooms 2	Bath 2	Reception 1	Parking here	Area 1054.86 sq ft	Type here



- PENTHOUSE APARTMENT
- PANORAMIC VIEWS OF MANCHESTER
- MODERN FEATURES THROUGHOUT
- ON-SITE GYM & OFFICE SPACES
- EXCELLENT ROOF TERRACE
- 24 HOUR CONCIERGE
- CENTRAL MANCHESTER LOCATION
- TWO UNDERGROUND PARKING SPOTS
- TWO DOUBLE BEDROOMS

Hibbert Homes are delighted to offer the rare opportunity to own this luxury Penthouse in the centre of Manchester, located within Wilburn Basin, Ordsall Lane! This brilliant property holds exceptional panoramic views of Manchester and offers modern characteristics throughout. Many benefits are included with this penthouse, such as underground gated parking for two vehicles, 24 hour concierge, on-site gym and office space. Wilburn Basin finds itself just a short walk away from Spinningfields, providing convenience to an array of amenities, bars, restaurants, while also benefiting those who work within the city centre too.

Wilburn Basin comprises from a large hallway upon entrance, two double bedrooms, both featuring access to the balcony, with the master bedroom featuring a modern en-suite with rain shower, a main bathroom further featuring a rain shower above bath and a slick tiled finish, an open-plan bespoke kitchen with integrated state-of the art appliances, and a cosy living space, with floor to ceiling windows drawing in excellent levels of natural light into the property.

A brilliant and rare feature to this property is the terrace on offer, offering incredible views of Manchester to enjoy, making this the perfect spot to host guests or enjoy for yourself!

This property is sold CHAIN FREE and is ready for anyone to move into immediately! Please contact Hibbert Homes Bramhall on 0161 480 0099 [enquiries@hibberthomes.com](mailto:enquiries@hibberthomes.com) to arrange your viewing today!

