



38 Chelmsford Road, Edgeley, Stockport, Cheshire, SK3 9LL

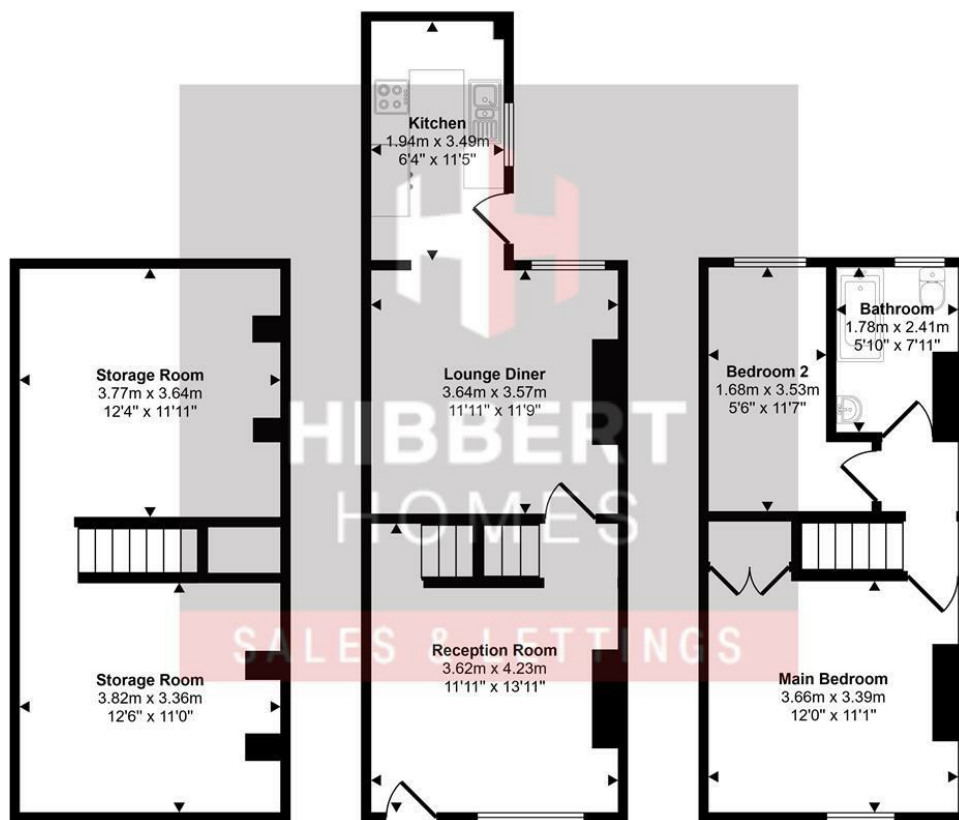
Hibbert Homes are delighted to offer, This Recently Renovated TWO BEDROOMED Victorian Mid Terraced Property has been appointed to the highest standard and is ideally situated in the heart of Edgeley close to Excellent Transport Links and Amenities.

In brief the accommodation comprises: Entrance into the Front Reception Room with feature hole in the wall fireplace, Separate Second Reception Room and provides access to Basement Cellar which provide Valuable Storage Space. The Kitchen has been Newly Fitted with a range of Contemporary Modern wall and base units. Stairs lead from the Two Reception Rooms to the First Floor Landing and to the Master Bedroom to the front, a Second Bedroom to the rear and a Modern Family Bathroom/WC with shower above the bath. Externally, the property has a Small Walled Garden to the front with Street Parking Available along with a Low Maintenance Yard to the rear.

The property is available on an 'Unfurnished' basis.
Council Tax Band- A.
EPC Rating - C.
Available from 22nd May 2025.

£1,150 PCM

Approx Gross Internal Area
95 sq m / 1022 sq ft



Lower Ground Floor
Approx 30 sq m / 326 sq ft

Ground Floor
Approx 36 sq m / 384 sq ft

First Floor
Approx 29 sq m / 312 sq ft

This floorplan is only for illustrative purposes and is not to scale. Measurements of rooms, doors, windows, and any items are approximate and no responsibility is taken for any error, omission or mis-statement. Icons of items such as bathroom suites are representations only and may not look like the real items. Made with Made Snappy 360.



Energy Efficiency Rating		
	Current	Potential
Very energy efficient - lower running costs		
(92 plus) A		
(81-91) B		
(69-80) C		
(55-68) D		
(39-54) E		
(21-38) F		
(1-20) G		
Not energy efficient - higher running costs		
England & Wales	EU Directive 2002/91/EC	

Environmental Impact (CO ₂) Rating		
	Current	Potential
Very environmentally friendly - lower CO ₂ emissions		
(92 plus) A		
(81-91) B		
(69-80) C		
(55-68) D		
(39-54) E		
(21-38) F		
(1-20) G		
Not environmentally friendly - higher CO ₂ emissions		
England & Wales	EU Directive 2002/91/EC	