



Cherry Tree Lane |
£235,000

Bedrooms 2

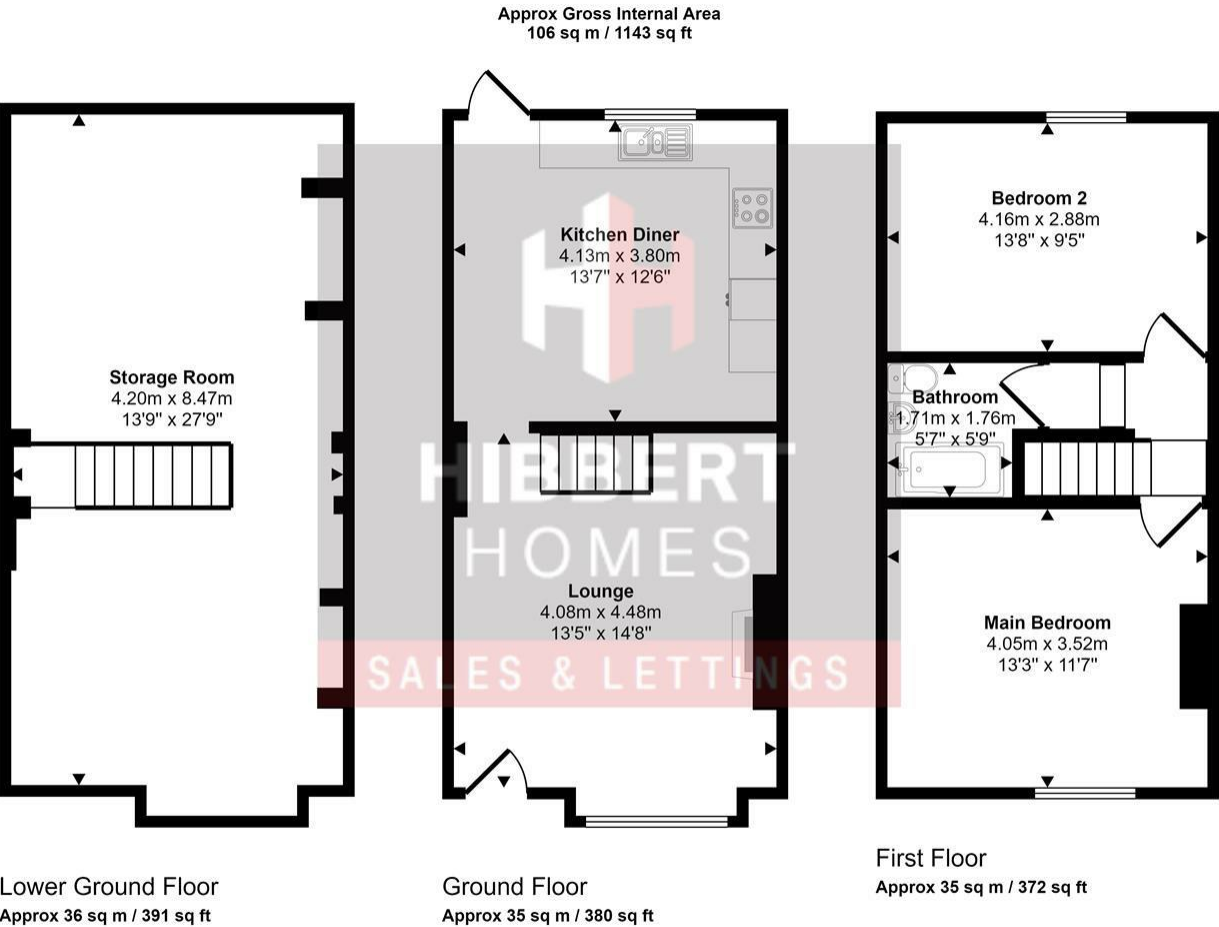
Bath 1

Reception 2

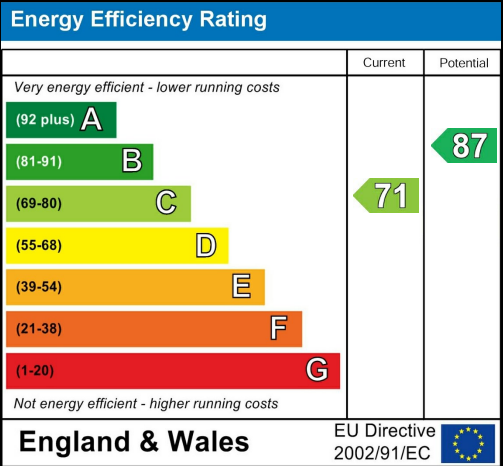
Parking here

Area
1143.00 sq ft

Type here



This floorplan is only for illustrative purposes and is not to scale. Measurements of rooms, doors, windows, and any items are approximate and no responsibility is taken for any error, omission or mis-statement. Icons of items such as bathroom suites are representations only and may not look like the real items. Made with Made Snappy 360.



SALES & LETTINGS

21 Bramhall Lane South | Bramhall | SK7 1AQ
t: 0161 480 0099
e: enquiries@hibberthomes.com
www.hibberthomes.com

- Well Presented Terraced Property
- Great Location
- Modern Kitchen
- Two Double Bedrooms
- Catchment to Multiple Schools
- Low Maintenance Garden

Hibbert Homes are pleased to bring this well-presented Two Bedroom terraced property located on Cherry Tree Lane to the market! This property boasts modern characteristics throughout, and offers ample space. Cherry Tree Lane is also within the catchment for an abundance of great schools.

This property briefly comprises from a spacious living room upon entrance, with an attractive fireplace and large window inviting plenty of natural light, a modern open kitchen/dining room, two well-presented double bedrooms and a modern main bathroom with bath and rain shower overhead. This property also includes a brilliant basement, with excellent space creating ideal storage space, with the potential to be converted too.

A pleasing garden with low-maintenance astro-turf is found at the rear of the property.

Viewings for this property are highly advised to avoid disappointment, so contact Hibbert Homes Bramhall on 0161 480 0099 enquiries@hibberthomes.com.

