



10 Hatherley Mews
, Cheltenham, GL51 6HJ

Asking Price £170,000



10 Hatherley Mews

, Cheltenham, GL51 6HJ

A lovely, well presented, light, bright and airy ground floor apartment available with no onward chain.

Located in a popular location, with convenient access to the town centre, Cheltenham train station, and the M5/local commuter routes, this two-bedroom apartment has been recently decorated and refurbished, along with newly fitted carpets.

Internally there is a secure communal entrance hall. Upon entering the apartment itself there is a hall, an open plan lounge/kitchen/diner with fitted appliances and laminate flooring, two double bedrooms with views to the communal garden, and a modern bathroom with a shower over the bath.

Outside the grounds are well kept and offer communal space for enjoying the summer months. There is also residents parking and a bike store.

- Two double bedrooms
- Ground floor apartment
- Newly decorated
- New carpets
- Double glazing
- Electric heating
- No chain
- Residents parking

Tenure is leasehold with freehold share.

125 year lease.

Peppercorn ground rent.

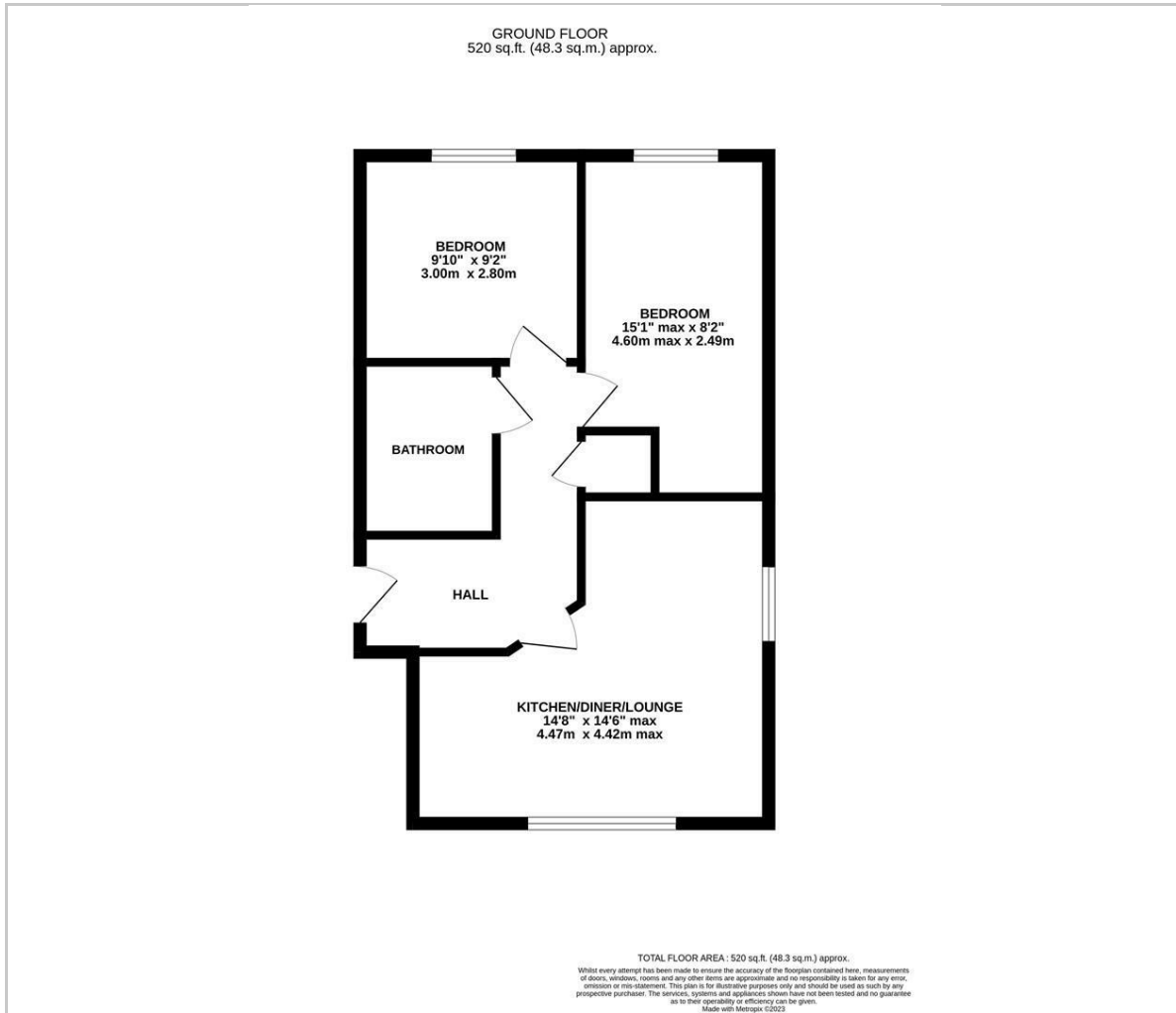
Service charge of £250pa.

To be confirmed by buyers legal representative.





Floor Plan



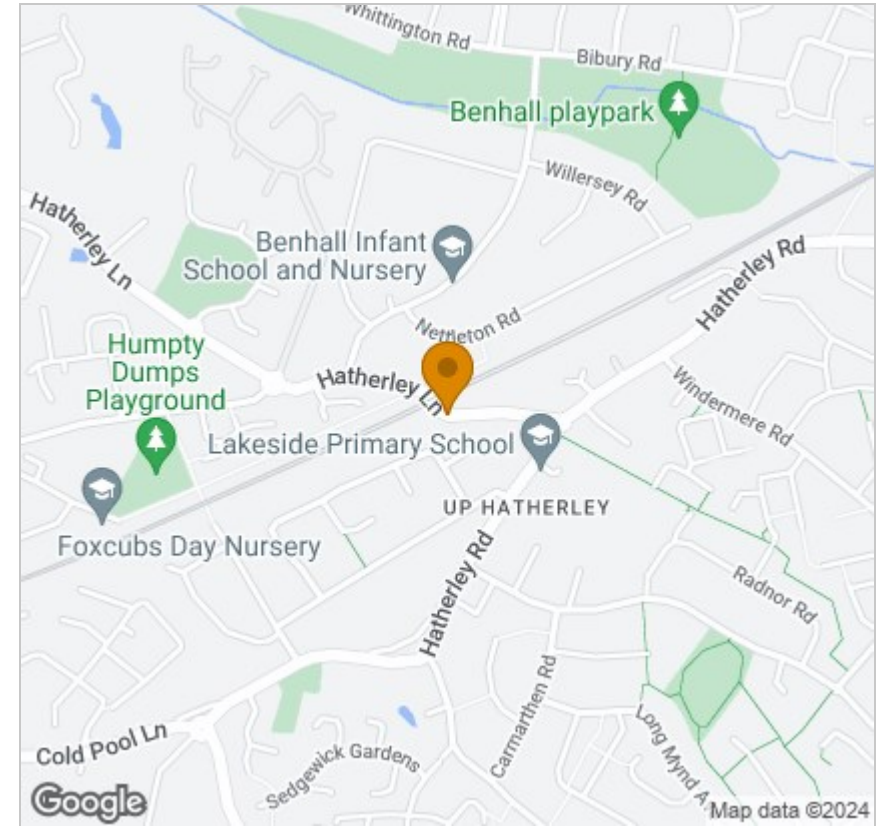
Viewing

Please contact our HMT Office on 01242 521322 if you wish to arrange a viewing appointment for this property or require further information.

These particulars, whilst believed to be accurate are set out as a general outline only for guidance and do not constitute any part of an offer or contract. Intending purchasers should not rely on them as statements of representation of fact, but must satisfy themselves by inspection or otherwise as to their accuracy. No person in this firm's employment has the authority to make or give any representation or warranty in respect of the property.

2 Crescent Terrace, Cheltenham, Gloucestershire, GL50 3PE
 Tel: 01242 521322 Email: info@hmt.co.uk <https://www.hmt.co.uk>

Area Map



Energy Efficiency Graph

