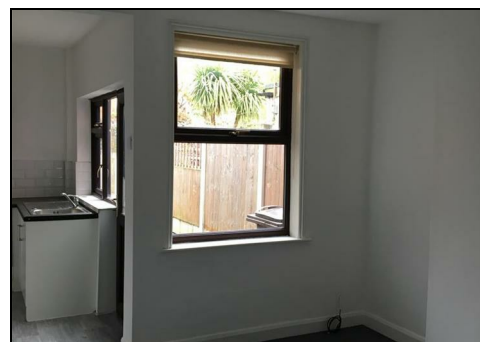




23 CHELTENHAM STREET, BASFORD, NOTTINGHAM NG6 0ES
£895 PER MONTH

Spacious 3 bed mid terrace property. Lounge with feature brick fireplace, separate dining room, open plan modern kitchen with oven/hob and extractor. To the first floor, bedroom one overlooks the front. Along a spacious landing with built-in storage leads to the second bedroom overlooking the rear and family bathroom which has a white 3 piece suite with shower over P shaped bath. Stairs lead to the second floor and bedroom three with velux window.

Outside to the rear is a good size garden with a brick built outbuilding with plumbing for washing machine, ideal for storage. Garden is laid to lawn with shrub boarders. GCH. Double Glazing. NO PETS or SMOKERS.



LONGE

DINING ROOM

KITCHEN

BED 1

LANDING

LANDING

BED 2

BATHROOM


BED 3

BED 3

OUT BUILDING

GARDEN

GARDEN

Energy Efficiency Rating		
	Current	Potential
Very energy efficient - lower running costs		
(92 plus) A		
(81-91) B		
(69-80) C		
(55-68) D		
(39-54) E		
(21-38) F		
(1-20) G		
Not energy efficient - higher running costs		
England & Wales	EU Directive 2002/91/EC	

Environmental Impact (CO ₂) Rating		
	Current	Potential
Very environmentally friendly - lower CO ₂ emissions		
(92 plus) A		
(81-91) B		
(69-80) C		
(55-68) D		
(39-54) E		
(21-38) F		
(1-20) G		
Not environmentally friendly - higher CO ₂ emissions		
England & Wales	EU Directive 2002/91/EC	