

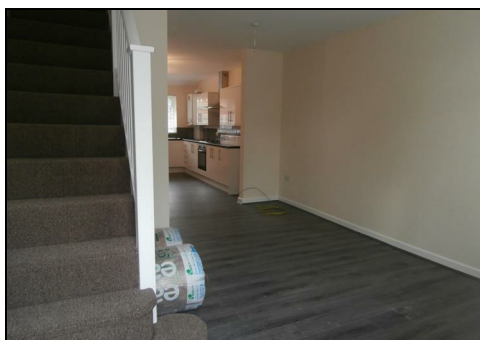



4 MIDLAND ROAD, NOTTINGHAM, NOTTINGHAMSHIRE NG4 2HA
£875 PCM

A two-storey, end terraced town house providing an attractive open-plan living room, large dining kitchen and ground floor cloakroom/W.C, two bedrooms and bathroom with shower to the first floor.

Gas central heating. UPVC double glazing. There is a yard and parking to the front and an enclosed yard to the rear. Close to local train station and Victoria Retail Park.

Council Tax A
EPC B



Energy Efficiency Rating		
	Current	Potential
<i>Very energy efficient - lower running costs</i>		
(92 plus) A		
(81-91) B		
(69-80) C		
(55-68) D		
(39-54) E		
(21-38) F		
(1-20) G		
<i>Not energy efficient - higher running costs</i>		
England & Wales	EU Directive 2002/91/EC	

Environmental Impact (CO ₂) Rating		
	Current	Potential
<i>Very environmentally friendly - lower CO₂ emissions</i>		
(92 plus) A		
(81-91) B		
(69-80) C		
(55-68) D		
(39-54) E		
(21-38) F		
(1-20) G		
<i>Not environmentally friendly - higher CO₂ emissions</i>		
England & Wales	EU Directive 2002/91/EC	