



Ascot Court, Epsom

The **PERSONAL** Agent

60% Shared ownership

£207,000

Leasehold

- **60% Shared Ownership**
- Fantastic position
- Two double bedrooms
- First floor apartment
- Immaculately presented
- Amazing kitchen/dining space
- Lounge with doors to Juliette balcony
- Allocated parking space
- Abundance of storage
- Surrounded by parkland



****60% Shared ownership****

Set towards the end of a no through road on the popular Livingstone Park development, this wonderfully positioned first floor modern apartment benefits from a huge amount of natural light throughout and access to the communal gardens to the rear.

The property is very well presented and offered to the market in good order throughout, in our opinion it warrants immediate inspection to fully appreciate the flexible and spacious accommodation on offer.

The property would suit a diverse selection of buyers, so whether you are a first time buyer, an investor or looking to downsize but not downgrade we would recommend immediate inspection to fully appreciate everything that this well balanced apartment offers.

The spacious living room has a door opening onto the Juliette balcony which overlooks the secluded communal rear gardens. The kitchen/dining room is a huge selling point and its really generous in size with space for table and chairs.

Within the entrance hall are two storage cupboards and there are two generous double bedrooms which really are superbly proportioned and it is a true rarity to get both bedrooms so spacious in size. Further noteworthy points to mention include full double glazing, security entry phone system, gas central heating, communal bin store and an allocated parking bay with further visitors parking and on street parking nearby.

Livingstone Park is a quiet and well regarded residential development, ideally located for Southfield Park primary school and on the doorstep of Horton Golf Club and Horton Country park which provide enjoyable walks/bike rides in a tranquil setting.

Equally convenient for Epsom town centre offering a wide range of facilities including shops, bars & restaurants, cinema & theatre and close to popular schools. Excellent transport links with Epsom railway station which provides regular trains to London Waterloo, Victoria & London Bridge. The M25 Junction 9 is about 3 miles drive away.

Tenure - Leasehold
Length of lease (years remaining) - 109
Monthly Shared ownership rent (£) - 444.26
Annual service charges amount (£) - TBC
Council tax band - C

PLEASE NOTE: Whilst we believe the information above to be correct, we are unable to guarantee this information until such time as we have formally verified it with the sellers. Therefore you are advised to clarify any information with your chosen legal representative before proceeding with the purchase of this property.

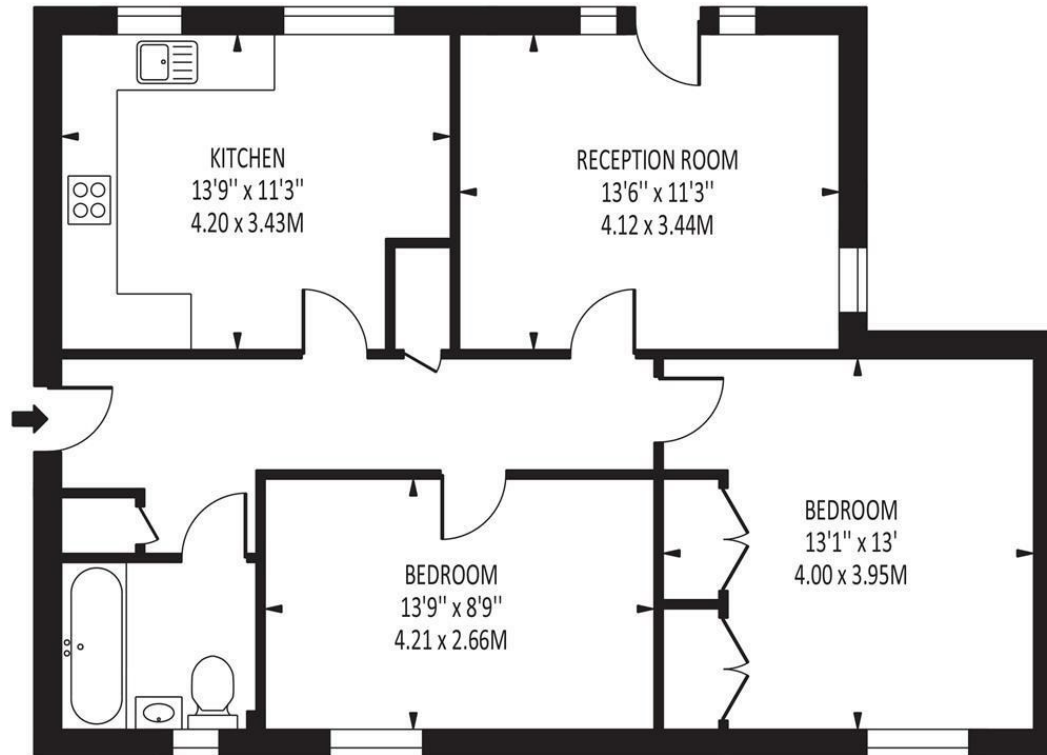




The **PERSONAL** Agent

Ascot Court, Eastman Way

Total Area: 769 SQ FT • 71.40 SQ M



Disclaimer: For Illustration Purposes only

This floor plan should be used as a general outline for guidance only and does not constitute in whole or in part an offer of contract. Any intending purchaser or lessee should satisfy themselves by inspection, searches, enquiries and full survey as to the correctness of each statement. Any areas, measurements or distances quoted are approximate and should not be used to value a property or be the basis of any sale or let.

Energy Efficiency Rating		Current	Potential
Very energy efficient - lower running costs			
(92 plus) A			
(81-91) B		80	80
(69-80) C			
(55-68) D			
(39-54) E			
(21-38) F			
(1-20) G			
Not energy efficient - higher running costs			
England & Wales		EU Directive 2002/91/EC	

EPSOM OFFICE

2 West Street
Epsom, Surrey, KT18 7RG
01372 745 850

STONELEIGH/EWELL OFFICE

62 Stoneleigh Broadway
Stoneleigh, Surrey, KT17 2HS
020 8393 9411

BANSTEAD OFFICE

141 High Street
Banstead, Surrey, SM7 2NS
01737 333699

LETTINGS & MANAGEMENT

163 High Street
Epsom, Surrey, KT19 8EW
01372 726 666



The Personal Agent Ltd. Registered office: 2A Boston Rd, Henley-on-Thames RG9 1DY.
Registered in England No. 4398817.



The **PERSONAL** Agent

Please Note: Whilst every attempt has been made to ensure the accuracy of the floorplans contained here, measurements of doors, windows and room areas are approximate and no responsibility is taken for any error, omission or mis-statement. These plans are for representation purposes only and should be used as such by and prospective purchaser. The services, systems and appliances listed in the specification have not been tested by The Personal Agent and no guarantee as to their operating ability or their efficiency can be given. All images and text used to advertise our properties are for the sole use of The Personal Agent Ltd.

