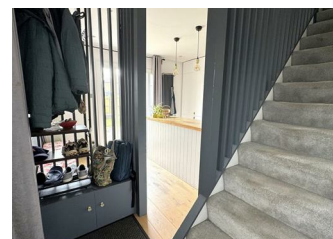


Colyton Close, Welling
£1,750 PCM

AVAILABLE MID-END JULY. Parris Residential are offering this well presented two bedroom house in a quiet cul de sac located in Welling. The property offers a modern fitted kitchen with appliances including an induction hob and integrated dishwasher, a separate living room and two good size bedrooms upstairs, along with a wet room. The garden is approx 77' with a shed for storage or garden tools. Additional benefits include Nest thermostat, off street parking, double glazing and a gas central heating system. Your viewing is highly recommended. Max Occupancy 2 Adults, 1 Child.

Council Tax : Bexley Band D | EPC : D | Rent PCM : £1750.00 | Security Deposit £2019.00 | Holding Deposit £403.00



Entrance Hall 6'4 x 4' (1.93m x 1.22m)

Kitchen/Diner 10'3 x 13'4 (3.12m x 4.06m)

Lounge 13'2 x 11'3 (max) (4.01m x 3.43m (max))

Landing

Bedroom One 13'3 x 12'3 (max) (4.04m x 3.73m (max))

Bedroom Two 13'6 x 7'9 (4.11m x 2.36m)

Wetroom 4'95 x 5'30 (1.22m x 1.52m)

Rear Garden approx 77' (approx 23.47m)