

6 Pickford Lane, Bexleyheath, Kent, DA7 4QW

Tel: 020 8303 4224

Email: enquiries@parrisresidential.co.uk

Website: www.parrisresidential.co.uk



Berkeley Avenue, Bexleyheath

£2,500 PCM

Parris Residential are delighted to have this lovely 3-4 bedroom semi detached house. The property is well presented throughout with a beautiful open plan kitchen, and bi folding doors, that opened fully on a sunny day, are perfect to extend the living space into the picturesque garden. The kitchen is fitted with an induction hob, integrated fridge-freezer and dishwasher. To give you more space, it has a utility room where you there is a washing machine and tumble dryer for your use. Upstairs you will find two double sized bedrooms with fitted wardrobes and a single third bedroom. If you are looking for an extra bedroom or perhaps a space to work from home, there is a fourth room downstairs, off of the hallway. The bathroom is a good size, offering a stand alone shower and a bath. Located within a few minutes walk to Bexleyheath Train Station or nearby the new Elizabeth Line getting you into London in less than 15 minutes. Good primary schools are on your doorstep and secondary schools are not too far either. The M25 and A2 Motorway links are nearby as well as the open space of Danson Park. Call today to arrange a viewing. This property really isn't to be missed!

Council Tax: London Borough of Bexley, Band E | Security Deposit: £2884.00 | Tenancy Term: Long Term
EPC: D



Porch

Hallway 12'5 x 6'4 (3.78m x 1.93m)

Lounge & dining room 22'8 x 10'9 (6.91m x 3.28m)

Open Plan Kitchen 20' (max) x 20' (max) (6.10m (max) x 6.10m (max))

Utility Room 8'8 x 6'3 (2.64m x 1.91m)

Bedroom 4/Study 7'9 x 5'9 (2.36m x 1.75m)

Landing

Bathroom

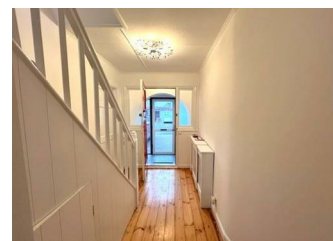
Bedroom One 11' x 9'5 (plus wardrobes) (3.35m x 2.87m (plus wardrobes))

Bedroom Two 11'9 x 9' (plus wardrobes) (3.58m x 2.74m (plus wardrobes))

Bedroom Three 6'9 x 7'9 (2.06m x 2.36m)

Rear Garden

driveway to front



GROUND FLOOR
790 sq.ft. (73.4 sq.m.) approx.



1ST FLOOR
381 sq.ft. (35.4 sq.m.) approx.

TOTAL FLOOR AREA : 1171 sq.ft. (108.8 sq.m.) approx.

For illustrative purposes only. Decorative finishes, fixtures, fittings and furnishings do not represent the current state of the property. Measurements are approximate. Not to scale. Made with Metropix © 2025

These particulars are believed to be correct but their accuracy is not guaranteed and they do not constitute an offer or form part of any contract. Great care is taken when measuring but measurements should not always be relied upon for ordering carpets, equipment etc. Parris Residential have not tested any included equipment or central heating system checked mentioned in these particulars and purchasers are advised to satisfy themselves as to their working order and condition. Where floor plans are shown they are for illustration and guidance purposes only.

