


- Four/Five Bedrooms
- Loft Conversion
- Modern Development
- Southerly Aspect Garden
- Hot Tub and Shed
- 3 x Parking
- Well Presented
- Kitchen-Diner
- Alarm System
- Ensuite Shower Room



Freehold
£365,000

 4 BEDROOM

 2 RECEPTION

 2 BATHROOM

 0 GARAGE

Barlow Place, Hailsham

Barlow Place, Hailsham

DESCRIPTION

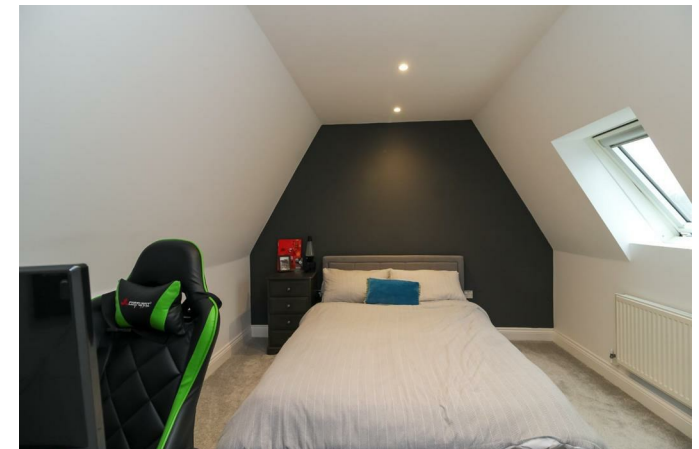
Four/Five bedrooms | Loft conversion | Study/home office space | kitchen/diner | Southerly aspect Garden | Low-maintenance rear garden with hot tub | Off-road parking for three vehicles | Close to local amenities and schools | Well-regarded schools nearby | Quiet residential location

Nestled within a popular residential area of Hailsham, this four-bedroom property offers well-planned accommodation throughout. Originally constructed as a three-bedroom end-terraced house, it has since been cleverly extended into the loft to create two additional double bedrooms and a study, providing an excellent space for a growing family or those needing to work from home.

The ground floor presents a practical layout, featuring an inviting entrance hall, kitchen/diner, and a southerly aspect lounge. From the lounge, French doors open onto the low-maintenance rear garden, complete with a hot tub and storage shed – perfect for relaxation or outdoor dining. Additionally, the downstairs benefits from a cloakroom/WC.

On the first floor, the main bedroom benefits from an en-suite, while a further double bedroom and the original third bedroom – now ideal as a study – offer flexible living arrangements.

Externally, the property offers off-road parking for up to three vehicles. Located close to local amenities and schools, this well-presented home is ideal for those seeking comfort and practicality in a desirable location.





Barlow Place, Hailsham

Driveway Parking Side By Side With One Car
Able To

Pathway To Entrance

Entrance Hall

Kitchen-Diner

Lounge

WC

Stairs To First Floor

Main Bedroom

Ensuite Shower Room

Second Bedroom

Third Bedroom-Study

Bathroom

Stairs To Second Floor

Bedroom

Bedroom

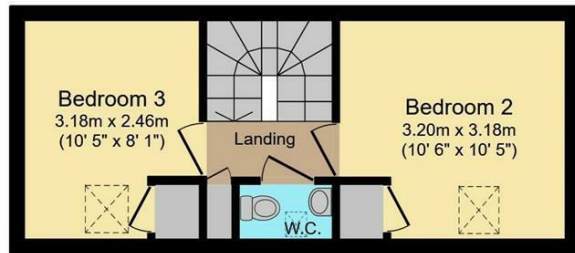
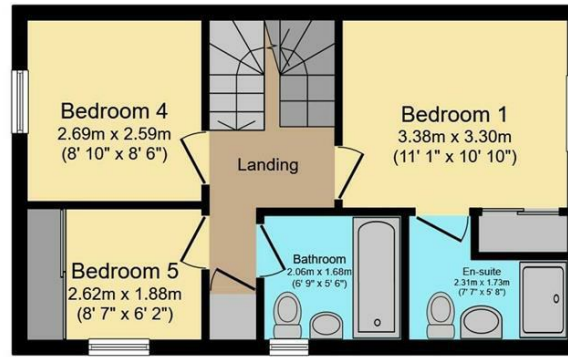
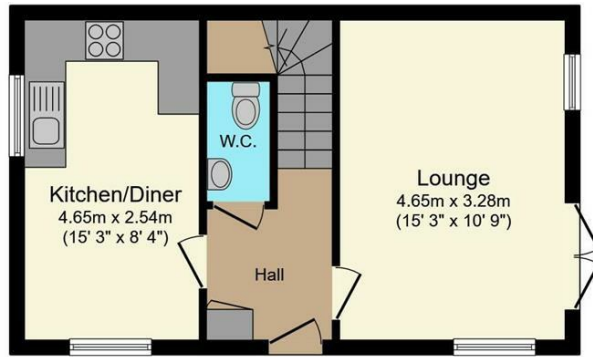
WC

Storage Cupboard

Southerly Aspect Garden With Hot Tub and
Shed



Barlow Place, Hailsham



Ground Floor

First Floor

Second Floor

Total floor area 97.8 sq.m. (1,053 sq.ft.) approx

This floor plan is for illustrative purposes only. It is not drawn to scale. Any measurements, floor areas (including any total floor area), openings and orientation are approximate. No details are guaranteed, they cannot be relied upon for any purpose and they do not form part of any agreement. No liability is taken for any error, omission or misstatement. A party must rely upon its own inspection(s). Plan produced for Purplebricks. Powered by www.focalagent.com

Energy Efficiency Rating		Current	Potential
Very energy efficient - lower running costs			
(92 plus) A			91
(81-91) B		78	
(69-80) C			
(55-68) D			
(39-54) E			
(21-38) F			
(1-20) G			
Not energy efficient - higher running costs			
England & Wales		EU Directive 2002/91/EC	