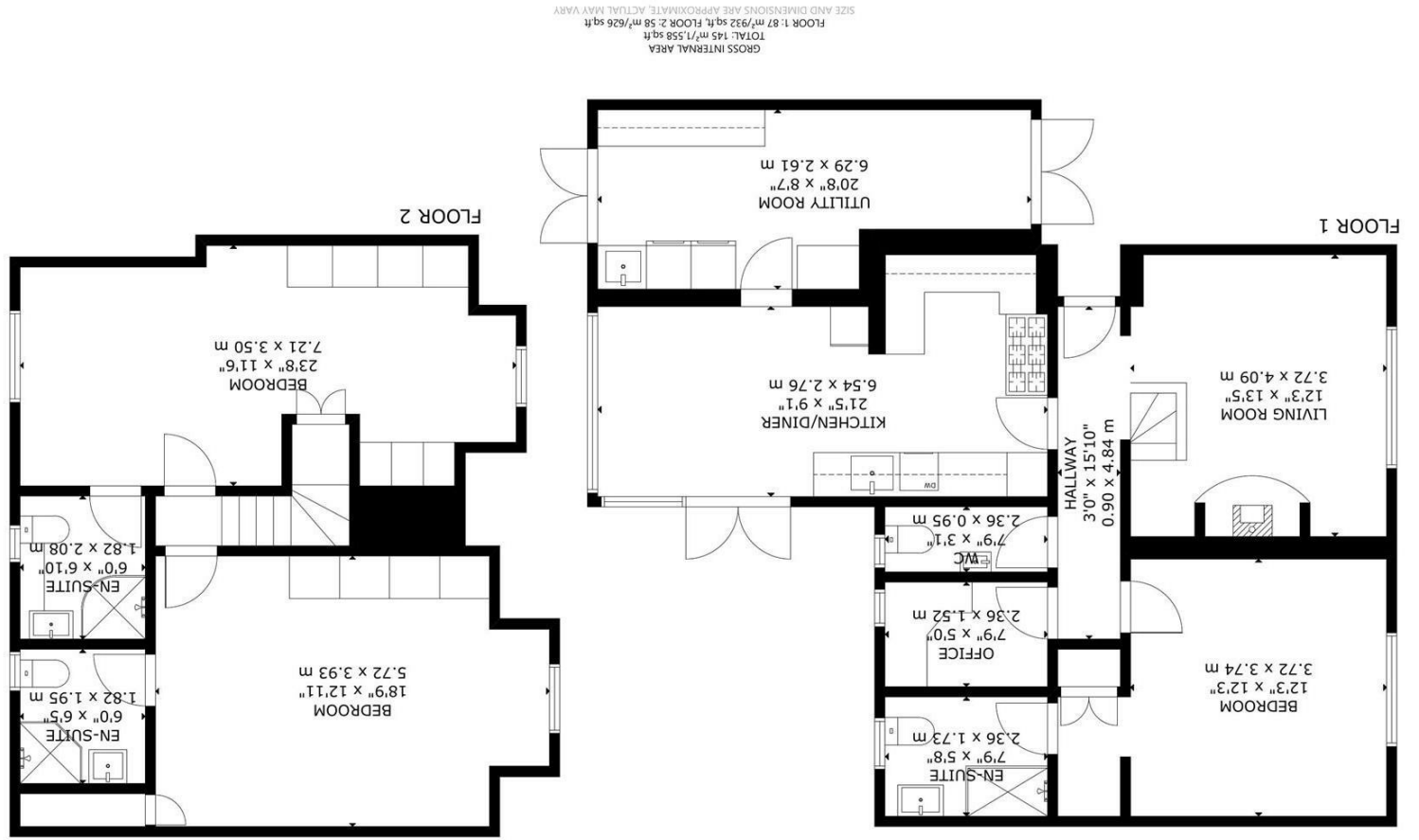
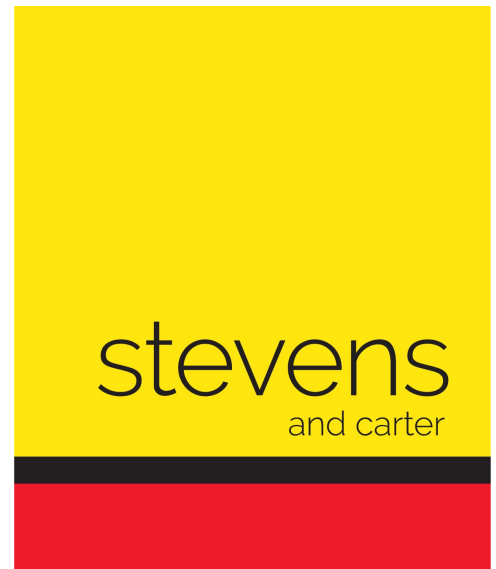


England & Wales	
Energy Efficiency Rating	2022/19 EPC
A (82-91)	92-100
B (71-81)	82-91
C (62-70)	69-81
D (54-61)	54-68
E (45-53)	35-53
F (35-44)	29-34
G (21-34)	1-28



Amberstone View, Hailsham



- 3D Virtual Tour
- Favoured Location
- Immaculate Presentation
- Kitchen-Diner
- Converted Garage
- Large Workshop
- Southerly Aspect Garden
- Driveway Parking
- Modern Glazing/Doors
- Gas Central Heating



Freehold

£425,000

3 BEDROOM 2 RECEPTION 3 BATHROOM 1 GARAGE

Amberstone View, Hailsham

Amberstone View, Hailsham

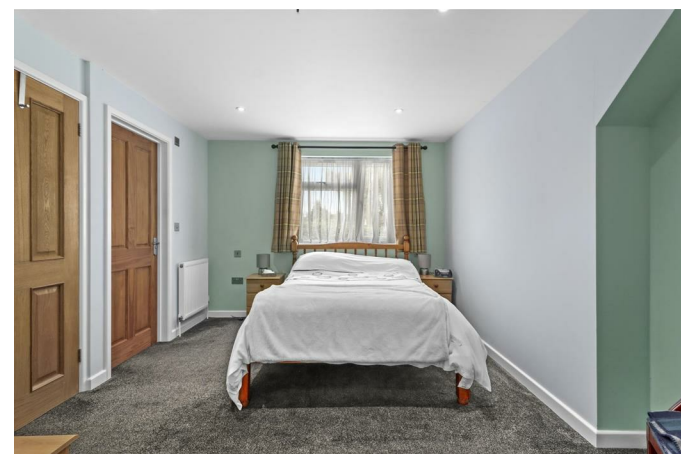
DESCRIPTION

Situated in the favoured location of Amberstone View, Hailsham, this immaculately presented and extended chalet bungalow offers both charm and versatility. Featuring three spacious double bedrooms, all with ensuite shower rooms, this home is perfect for those seeking both comfort and style.

The ground floor boasts a welcoming entrance hall, a cosy lounge, and a well-designed kitchen that flows into a conservatory, creating a delightful dining space. A study and utility room, cleverly adapted from the garage, add further functionality. The ground floor bedroom includes a dressing area, along with its own ensuite, providing convenience and privacy.

Upstairs, two generously proportioned double bedrooms are also ensuite, ensuring ample space for family or guests. Outside, the property enjoys a sunny aspect garden, perfect for relaxing or entertaining, along with a large outbuilding and ample off-road parking.

This home truly shines with its thoughtful design and prime location. Don't miss the opportunity to view—explore the property through our professional photography and 3D Virtual Tour, and contact us for a personal viewing.



Amberstone View, Hailsham

Entrance

Hallway 0.90 x 4.84 (2'11" x 15'10")

Living Room 3.72 x 4.09 (12'2" x 13'5")

Kitchen-Diner 6.54 x 2.76 (21'5" x 9'0")

Utility Room/Garage

Bedroom 3.72 x 3.72 (12'2" x 12'2")

Dressing Area

Ensuite 2.36 x 1.73 (7'8" x 5'8")

Office 2.36 x 1.52 (7'8" x 4'11")

WC 2.36 x 0.95 (7'8" x 3'1")

Stairs To First Floor

Landing

Bedroom 5.72 x 3.93 (18'9" x 12'10")

Ensuite 1.82 x 1.95 (5'11" x 6'4")

Bedroom 7.21 x 3.50 (23'7" x 11'5")

Ensuite 1.82 x 2.08

Driveway

Large Garden Workshop