


- 3D Virtual Tour
- Under 10 Years Old
- Outskirts of Park
- South Westerly Garden
- Lounge-Diner
- Integral Appliances
- Move In Ready
- Walkable To Amenities
- Mains Gas Central Heating
- 32x22 FT



Freehold
£195,000

 2 BEDROOM

 1 RECEPTION

 1 BATHROOM

 0 GARAGE

Bluebell Glade, Golden Cross

Bluebell Glade, Golden Cross

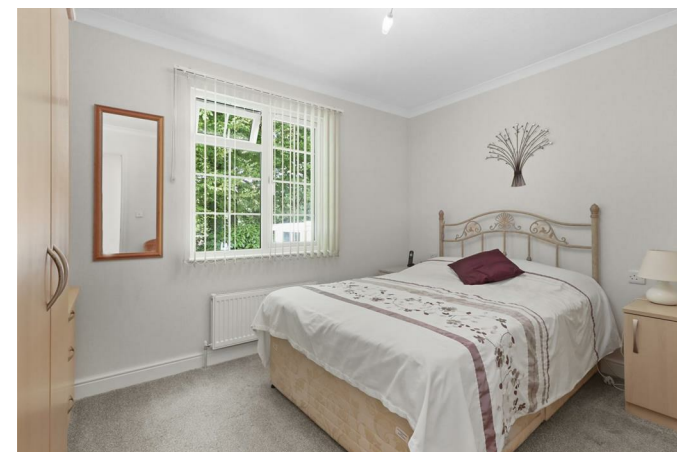
DESCRIPTION

RESIDENTIAL PARK HOME | 3D Virtual Tour | Under 10 Years Old | Immaculate Condition | Integral Appliances | Lounge-Diner | South-Westerly Garden | Mains Gas Central Heating | Two Double Bedrooms | Driveway | Walkable To Amenities |

Located on the peaceful outskirts of the sought-after Deanland Wood Park, this charming two-bedroom residential Park Home, built by "Prestige" in 2015, offers comfortable living in a serene setting. Measuring 32ft by 22ft, this property benefits from a range of features, including off-road parking for one car, a bright and airy triple-aspect reception area, and a modern kitchen with integrated appliances.

The outdoor space is equally impressive, with a good-sized rear garden, a garden store, and an elevated patio area with convenient ramped access, perfect for enjoying outdoor relaxation. Despite its quiet "side road" position, the property is just a short walk from the park's excellent amenities, bowling green, post office/shop, social hall, and a welcoming inn and restaurant.

Offered for sale chain-free, this home provides an attractive opportunity, with the added benefit of potential occupancy available from late September. Ideal for those seeking a peaceful lifestyle with easy access to community facilities.





Bluebell Glade, Golden Cross

Entrance Hall 2.99 x 2.80 (9'9" x 9'2")

Lounge-Diner 3.87 x 6.95 (12'8" x 22'9")

Kitchen 2.89 x 3.08 (9'5" x 10'1")

Main Bedroom 3.44 x 3.08 (11'3" x 10'1")

Second Bedroom 2.44 x 3.20 (8'0" x 10'5")

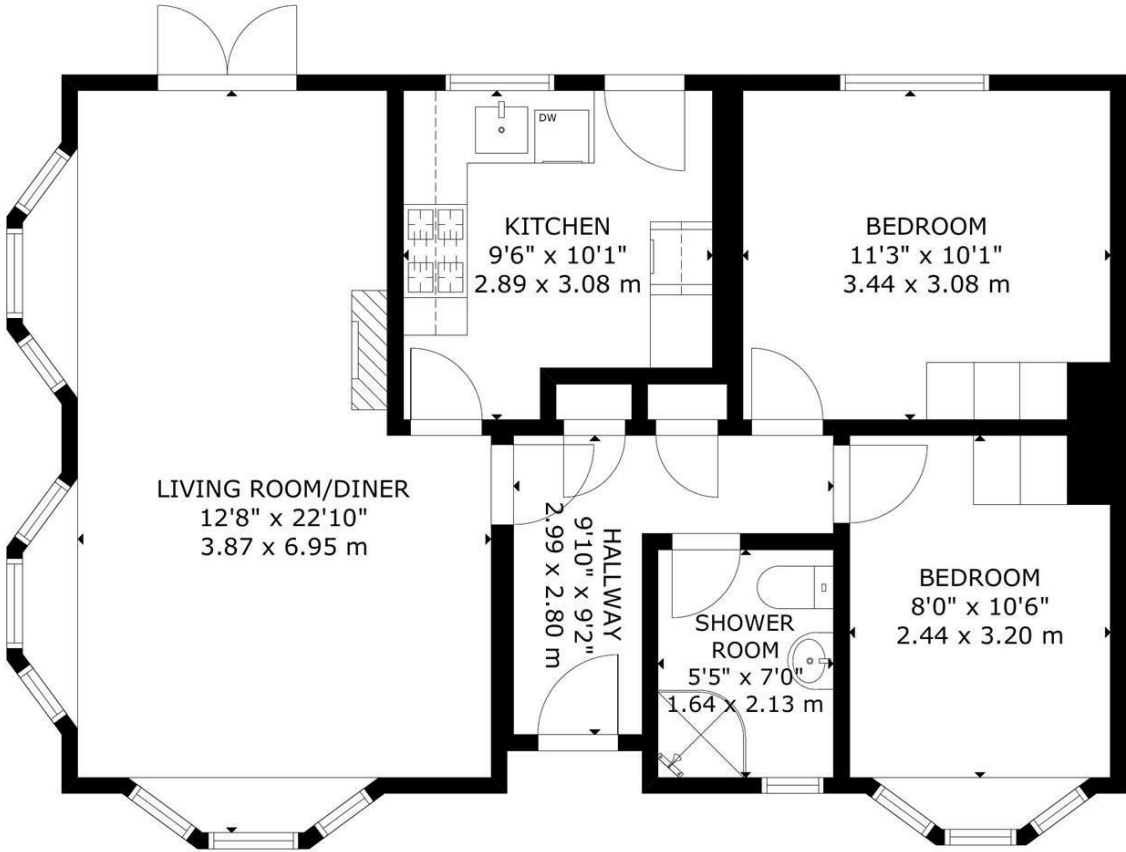
Shower Room 1.64 x 2.13 (5'4" x 6'11")

Wrap Around Gardens

Parking Space



Bluebell Glade, Golden Cross



GROSS INTERNAL AREA
TOTAL: 65 m²/697 sq ft
FLOOR 1: 65 m²/697 sq ft
SIZE AND DIMENSIONS ARE APPROXIMATE, ACTUAL MAY VARY

FLOOR 1



You may download, store and use the material for your own personal use and research. You may not republish, retransmit, redistribute or otherwise make the material available to any party or make the same available on any website, online service or bulletin board of your own or of any other party or make the same available in hard copy or in any other media without the website owner's express prior written consent. The website owner's copyright must remain on all reproductions of material taken from this website.

47 High Street | Hailsham | East Sussex | BN27 1AN

Tel: 01323 840444
www.stevensandcarter.co.uk

