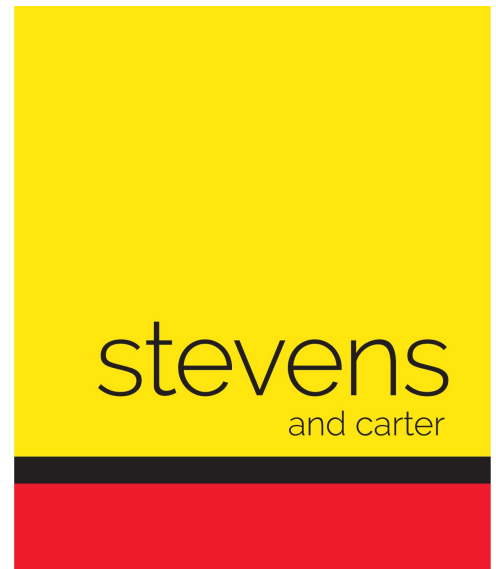
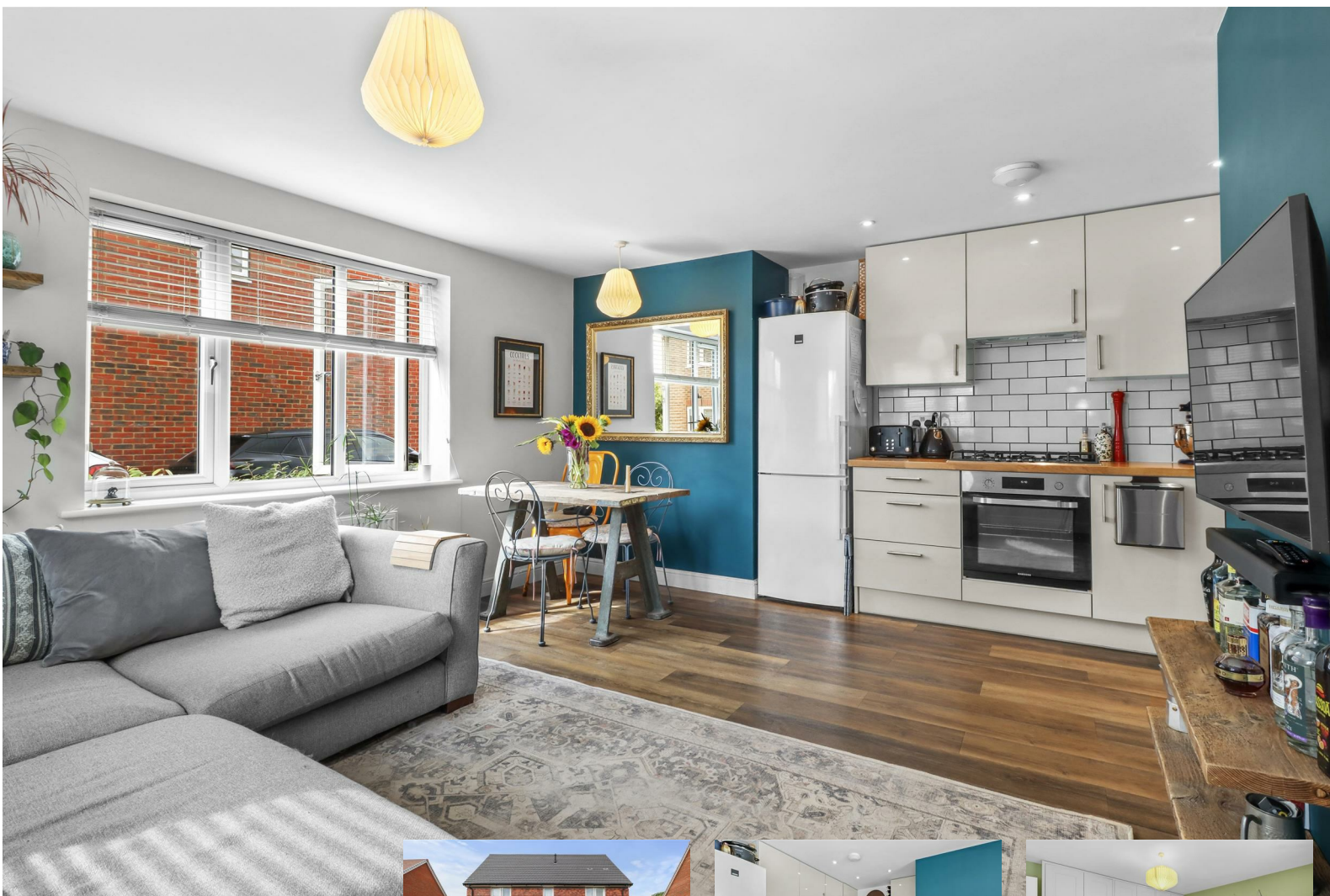


Autumn Drive, Heathfield



- 3D Virtual Tour
- Modern Ground Floor Maisonette
- Open Plan Living Accommodation
- Spacious Bedroom
- Bathroom/WC
- Off Road Parking
- Private Rear Gardens
- Viewing Advised
- No Onward Chain

Leasehold

£210,000

1 BEDROOM 1 RECEPTION 1 BATHROOM 0 GARAGE

Autumn Drive, Heathfield

Autumn Drive, Heathfield

DESCRIPTION

3D Virtual Tour | One Bedroom Ground Floor Maisonette | Open Plan Living Accommodation | Spacious Bedroom | Modern Bathroom | Private Rear Gardens | Off Road Parking | Long Lease |

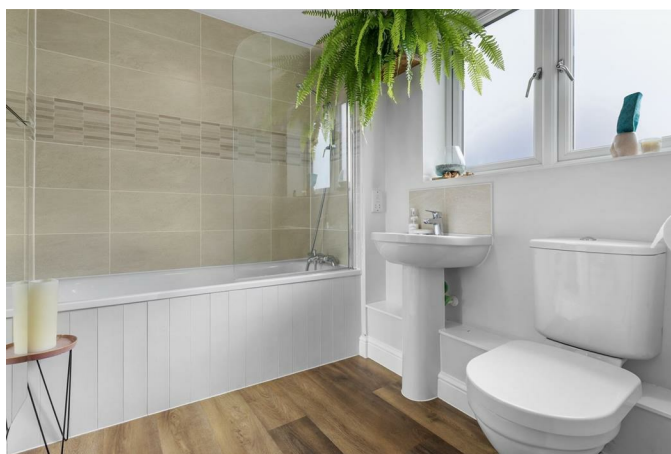
Stevens and Carter are pleased to market this well presented one bedroom ground floor maisonette situated in this popular and convenient location. Positioned within walking distance to local shops, schools and bus links it is the perfect place to call home.

This spacious masonette comprises of an open plan living room/kitchen which offers plenty of space for all your soft furnishings alongside a dining table and chairs. The modern fitted kitchen area provides plenty of storage solutions, solid wood work surfaces and some fitted appliances.

The large bedrooms is positioned close by and offers ample fitted wardrobes and space for your associated bedroom furniture. Finally, to conclude the internal accommodation, a modern bathroom/wc comprises of a bath with shower over, wash basin and W/C.

Externally this home offers a private drive for two vehicles which in turn leads to a secluded and private rear garden. The gardens are mainly laid to lawn with a decked area, pockets for planting and veggie patch.

This home was built in 2020 and has 121 years remaining on the Lease. We have been advised that a service charge of £94.34 is payable per calendar month.



Autumn Drive, Heathfield

Entrance Hall 2.64m x 2.11m (8'8 x 6'11)

Lounge Area 3.71m x 2.97m (12'2 x 9'9)

Kitchen 4.72m x 2.03m (15'6 x 6'8)

Bedroom 4.24m x 3.53m (13'11 x 11'7)

Bathroom/WC 2.34m x 1.88m (7'8 x 6'2)

Rear Gardens

Off Road Parking

