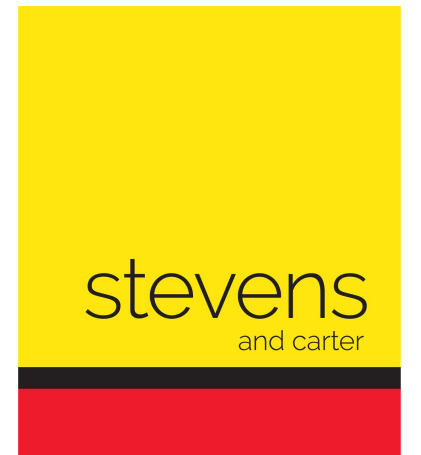


Hawkswood Drive, Hailsham



- 3D Virtual Tour
- Popular North Hailsham Location
- Close to Bus Routes & Shops
- Extended Kitchen/Dining Room
- Spacious Lounge
- Three Bedrooms
- Modern Bathroom/WC
- Off Road Parking
- South Facing Gardens
- Must Be Viewed

Freehold

£325,000

3 BEDROOM
 1 RECEPTION
 1 BATHROOM
 0 GARAGE

Hawkswood Drive, Hailsham

## Hawkswood Drive, Hailsham

---

### DESCRIPTION

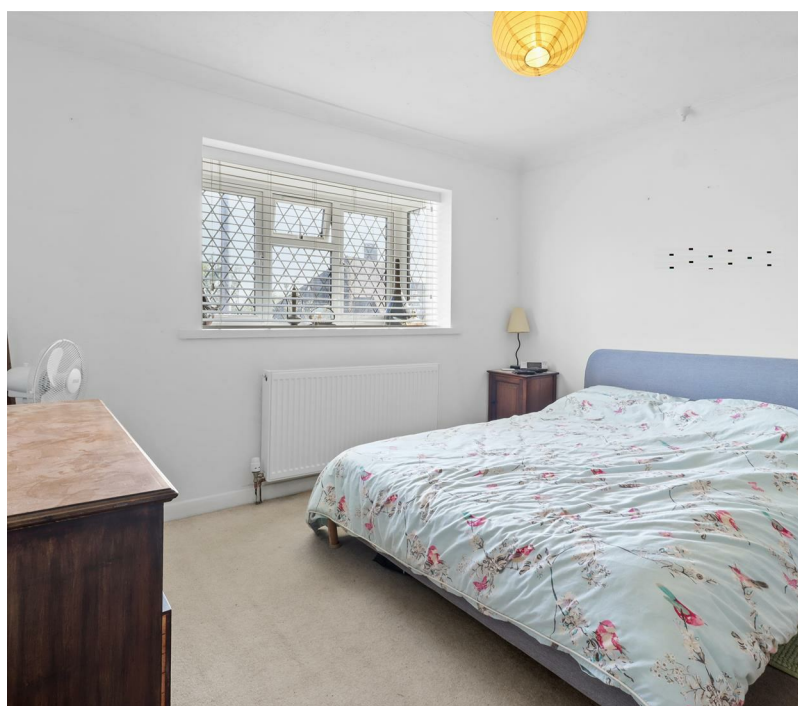
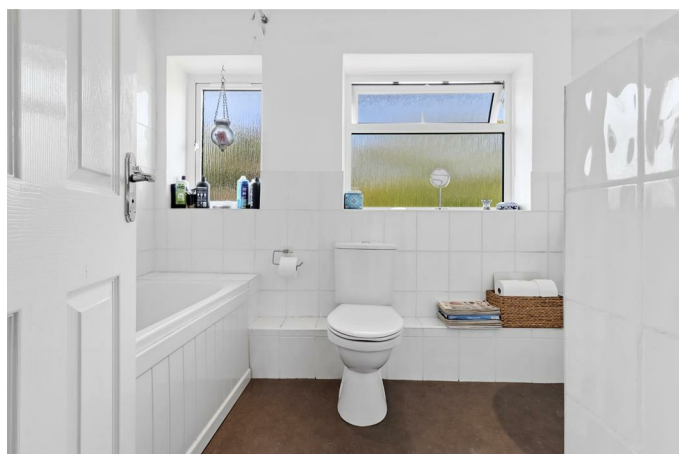
3D Virtual Tour | Popular Location | Extended Family Home | Off Road Parking | South Facing Garden | Spacious Kitchen Dining Room | Three Bedrooms | Lounge | Wood Burning Stove |

Stevens and Carter are pleased to market this spacious family home in this popular location of North Hailsham. Positioned within walking distance to local shops, schools and bus links to Eastbourne and beyond it is one not to miss.

Situated to the front of this home is a bright and airy lounge. Here you will find plenty of space for your soft furnishings alongside a wood burning stove which gives the room a real focal point. The spacious and extended kitchen dining room is positioned to the rear and boasts ample cupboards for storage, works surfaces and space for the usual appliances. Doors and windows from here overlook and afford access to the rear gardens.

On the first floor you will find three bedrooms. The master which lies to the front offers ample space for your associated furniture. The remaining bedrooms are close by and offer pleasant outlooks over the gardens. Finally to complete the internal accommodation, a modern bathroom/wc comprises of a bath with shower over, wash basin and WC.

Externally, the front offers off road parking for two vehicles and the south facing rear gardens are mainly laid to lawn, a patio area captures the sun throughout the day alongside mature shrubs and planting.



## Hawkswood Drive, Hailsham

---

- Entrance Hall 3.56m x 1.91m (11'8 x 6'3)
- Lounge 6.45m x 3.81m (21'2 x 12'6)
- Dining Room 2.87m x 2.77m (9'5 x 9'1)
- Kitchen 5.54m x 3.05m (18'2 x 10'0)
- First Floor Landing 2.24m x 1.63m (7'4 x 5'4)
- Bedroom One 3.48m x 3.33m (11'5 x 10'11)
- Bedroom Two 3.00m x 2.82m (9'10 x 9'3)
- Bedroom Three 2.26m x 2.11m (7'5 x 6'11)
- Bathroom WC 2.90m x 1.85m (9'6 x 6'1)
- Off Road Parking
- South Facing Rear Gardens

