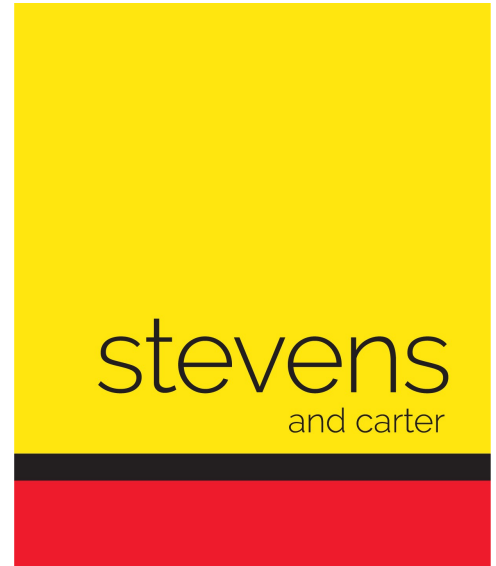


FLOOR 1

, Hailsham



- 3D Virtual Tour
- No Onward Chain
- Period Family Home
- Spacious & Versatile Living Accommodation
- Kitchen / Dining Room / Lounge
- Two Further Reception Rooms
- Three Bedrooms
- Master Bedroom / Ensuite Shower Room W/C
- Large Rear Gardens
- Double Length Garage & Off Road Parking



Freehold

£499,950

3 BEDROOM

3 RECEPTION

2 BATHROOM

1 GARAGE

, Hailsham

## , Hailsham

### DESCRIPTION

3D Virtual Tour | No Onward Chain | Period Family Home | Popular Location | Large Rear Gardens | Versatile Accommodation | Three Bedrooms | Three Reception Rooms | Two Bathrooms | Viewings Advised.

Stevens and Carter are pleased to market this beautiful double fronted period home set in the popular and desirable location of Horsebridge. This home, situated within walking distance to bus routes, local shops and schools is the perfect place for you to raise your family.

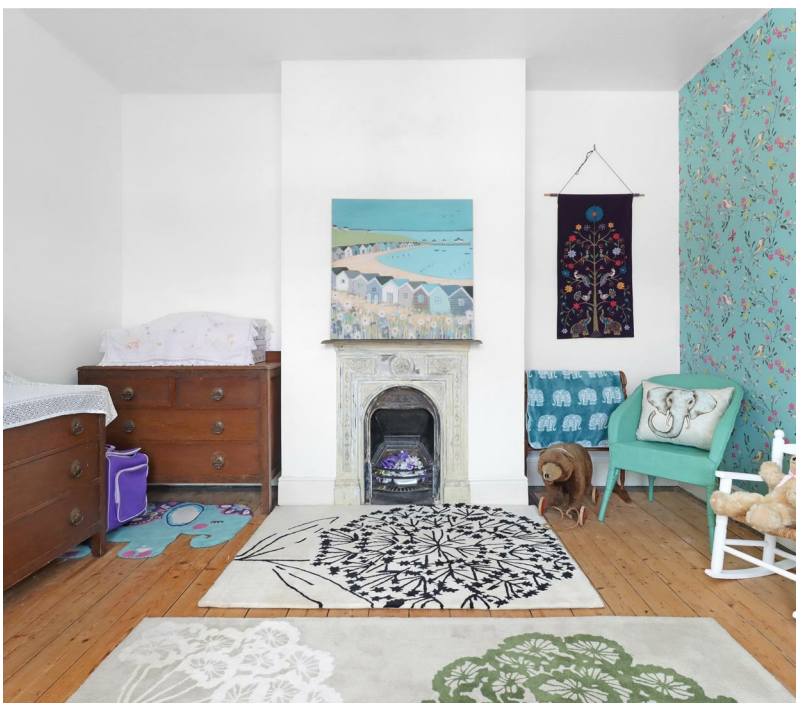
Positioned to the front of this spacious home are two versatile reception rooms, both of which offer ample space for soft furnishings, feature fire places and bay windows overlook the front gardens.

The current owner uses one as a study, but the choice would be yours.

Situated to the rear an impressive extended open plan living space really is the heart of this home. The kitchen offers ample cupboards for storage, work surface and space for the usual appliances alongside a rayburn cooker. There is enough room for a large dining table too! Ideal for entertaining your friend and family. Leading through is a large dual aspect lounge. Here you will find plenty of space for your furniture. Windows and patio doors over look and afford access into the large gardens. Finally, to complete the ground floor accommodation, a handy utility room & Wc are present.

On the first floor, Three double bedrooms are offered. The master which is positioned to the front boasts its very own dressing room and en-suite shower room/wc. The remaining bedrooms are close by and are serviced by a bathroom/wc which comprises of a bath, separate shower, wash basin and wc.

Externally, the 140ft mature gardens are mainly laid to lawn with well stocked borders, patios and other areas of interest. To the rear of the garden you will find a variety of fruit trees and outbuildings, that then backs onto Horsebridge Recreation ground. Lastly, an oversize garage and off road parking for several vehicles complete this homes features



## , Hailsham

Entrance Hall 3.66m x 1.80m (12'0 x 5'11)

Study 3.89m x 3.66m (12'9 x 12'0)

Reception Room To Front 3.89m x 3.61m (12'9 x 11'10)

Inner Hallway 1.96m x 1.57m (6'5 x 5'2)

Utility Room 2.41m x 2.18m (7'11 x 7'2)

Ground Floor WC 1.57m x 0.91m (5'2 x 3'0)

Kitchen Dining Room 5.61m x 3.84m (18'5 x 12'7)

Living Room 5.82m x 3.61m (19'1 x 11'10)

First Floor Landing 5.18m x 1.93m (17'0 x 6'4)

Bedroom One 3.66m x 3.63m (12'0 x 11'11)

Dressing Room 2.16m x 1.73m (7'1 x 5'8)

En-Suite Shower Room/WC 2.16m x 1.78m (7'1 x 5'10)

Bedroom Two 3.71m x 3.66m (12'2 x 12'0)

Bedroom Three 3.51m x 3.30m (11'6 x 10'10)

Bathroom/WC 2.31m x 1.93m (7'7 x 6'4)

Front & Rear Gardens

Off Road Parking & Garage

Front & Rear Gardens