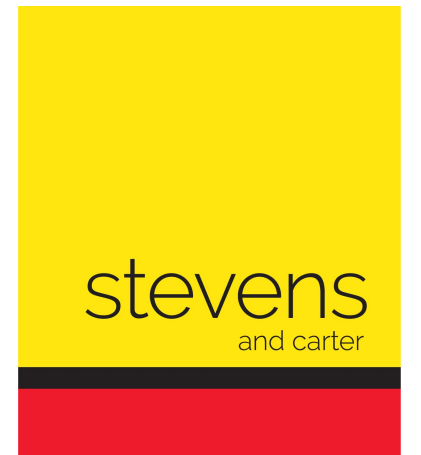


Ashley Gardens, Hailsham



- 3D Virtual Tour
- Terrace House in Popular Location
- Fitted Kitchen
- Lounge
- Two Bedrooms
- Modern Bathroom
- Rear Gardens
- Two Allocated Parking Spaces
- Gas Central Heating
- Viewing Advised



Freehold

£270,000

2 BEDROOM 1 RECEPTION 1 BATHROOM 0 GARAGE

Ashley Gardens, Hailsham

Ashley Gardens, Hailsham

DESCRIPTION

3D Virtual Tour | Two Bedroom House | Ideal First Purchase | Gas Central Heating | Kitchen | Lounge | Modern Bathroom | Allocated Parking | Call To Book Your Viewing |

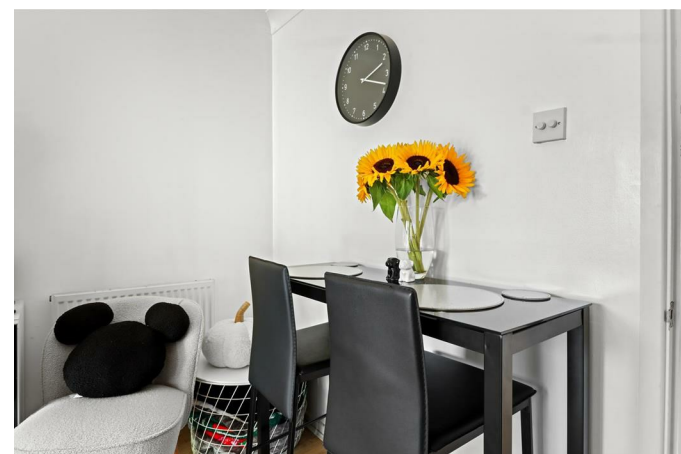
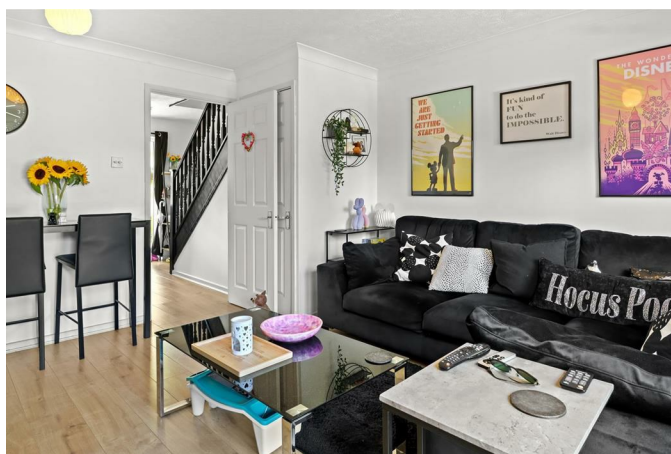
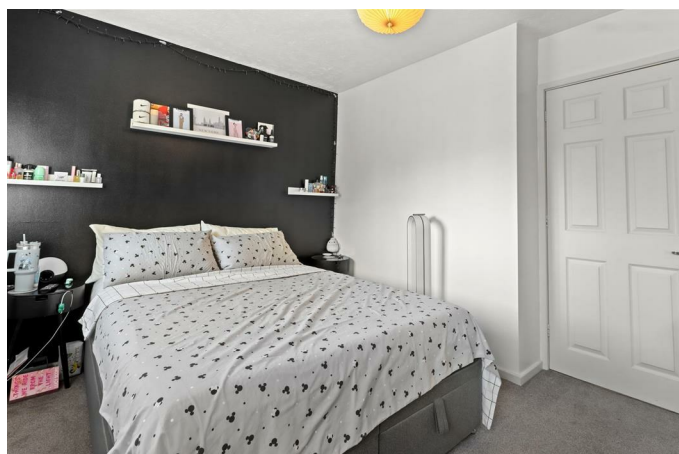
Stevens and carter are pleased to market this well presented two bedroom house in this popular location. Situated within walking distance to local shops, bus routes and schools it is the perfect place to call home.

You are greeted into the bright and airy entrance hall, from here a modern kitchen is positioned to the front and offers ample cupboards for storage, work surfaces and space for your appliances.

The spacious lounge is positioned to the rear and offers plenty of space for all your soft furnishings and windows and doors overlook and afford access into the rear gardens.

On the first floor, two bedrooms are offered and are of a good size. These are serviced by a bathroom/wc which comprises of a bath with shower over, wash basin, WC and are complimented by contrasting tiling.

Externally, the rear garden is mainly laid to lawn with a patio that captures the sun throughout the day and is the perfect place to sit and relax. Finally, two allocated parking spaces are positioned footsteps from your front door.



Ashley Gardens, Hailsham

Entrance Hall 2.08m x 1.88m (6'10 x 6'2)

Kitchen 3.00m x 1.83m (9'10 x 6'0)

Lounge 4.06m x 3.78m (13'4 x 12'5)

First Floor Landing 1.52m x 0.86m (5'0 x 2'10)

Bedroom One 3.78m x 3.07m (12'5 x 10'1)

Bedroom Two 3.84m x 2.41m (12'7 x 7'11)

Bathroom/WC 1.88m x 1.65m (6'2 x 5'5)

Front & Rear Gardens

Allocated Parking

