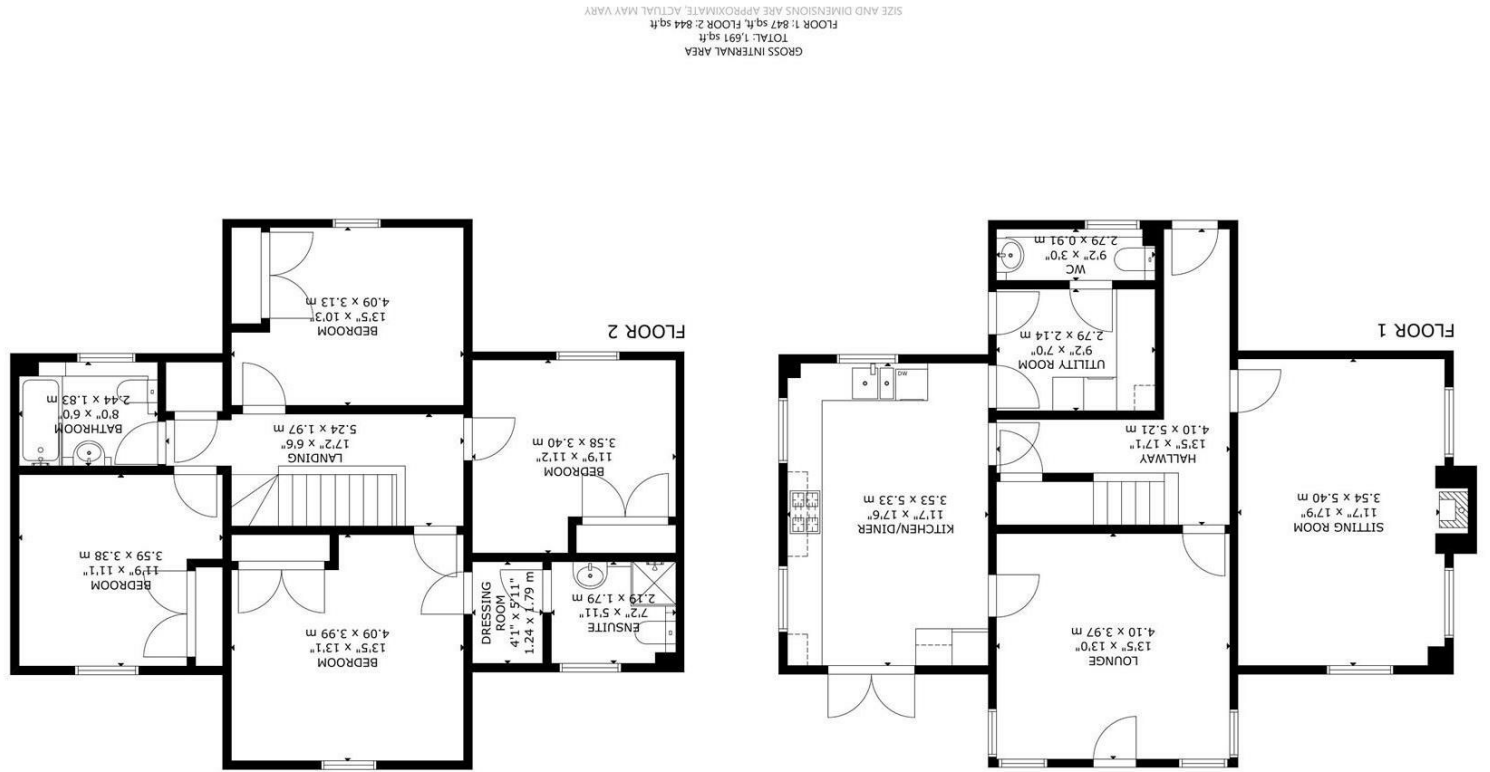
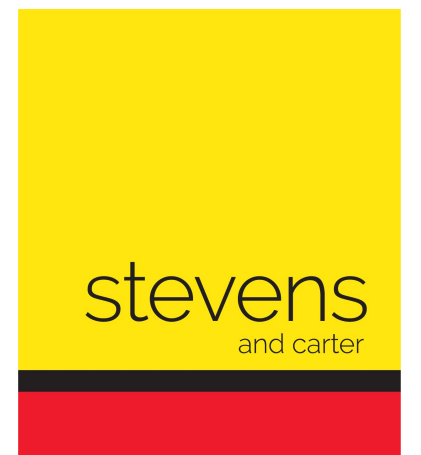


England & Wales	
EU Directive 2002/91/EC	
Not energy efficient - higher running costs	Very energy efficient - lower running costs
G	11-20
F	12-20
E	13-20
D	14-20
C	15-20
B	16-20
A	17-20
82	82
Current	Potential



Sandbanks Place, Hailsham



- 3D Virtual Tour
- Exclusive Development
- New England Influenced
- 1700 SQFT
- Landscaped Gardens
- Two Separate Reception Rooms
- Kitchen-Diner
- Utility Room
- Backing Onto Pond
- Outskirts of Town



Freehold

£665,000

4 BEDROOM 2 RECEPTION 2 BATHROOM 0 GARAGE

Sandbanks Place, Hailsham

Sandbanks Place, Hailsham

DESCRIPTION

3D Virtual Tour | Exclusive Development | Adjacent Sandbanks House | New England Influenced | Spacious and Bright | Unique Opportunity | Tastefully Landscaped Garden | Car Port and Driveway | Two Reception Rooms | Utility Room | Kitchen-Diner |

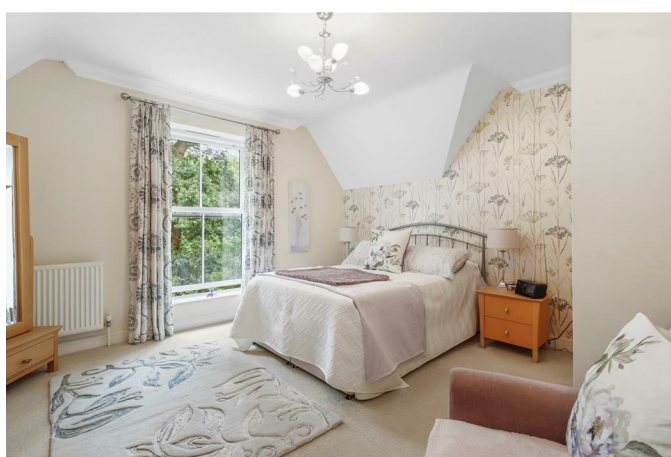
Occupying a favoured end of cul-de-sac situation within this prestigious exclusive development is this most beautifully and fastidiously presented, detached New England influenced house.

A rare opportunity arises to acquire this wonderful property built by a local developer in 2015 with each property boasting tasteful individuality, character and charm.

Internally, the house is arranged with an entrance hall, spacious kitchen-dining room, lounge, sitting room, utility room and wc. Upstairs can be found the master bedroom with ensuite facility and dressing room, three further double bedrooms all having built in storage, and a family bathroom.

The rear garden offers a high degree of privacy and has been carefully landscaped thus creating a mature feel, backing on to a wooded area with pond - A pleasant outlook.

Convenience on your doorstep - Driveway parking for three to four vehicles, a carport and store.



Sandbanks Place, Hailsham

- Entrance Hall 4.10 x 5.21 (13'5" x 17'1")
- Kitchen-Diner 3.53 x 5.33 (11'6" x 17'5")
- Utility Room 2.79 x 2.14 (9'1" x 7'0")
- WC 2.79 x 0.91 (9'1" x 2'11")
- Lounge 4.10 x 3.97 (13'5" x 13'0")
- Sitting Room 3.54 x 5.40 (11'7" x 17'8")
- Stairs To First Floor
- Landing 5.24 x 1.97 (17'2" x 6'5")
- Main Bedroom 4.09 x 3.99 (13'5" x 13'1")
- Dressing Area 1.24 x 1.79 (4'0" x 5'10")
- Ensuite Shower Room 2.19 x 1.79 (7'2" x 5'10")
- Second Bedroom 4.09 x 3.13 (13'5" x 10'3")
- Third Bedroom 3.58 x 3.40 (11'8" x 11'1")
- Fourth Bedroom 3.59 x 3.38 (11'9" x 11'1")
- Bathroom 2.44 x 1.83 (8'0" x 6'0")
- Hall Cupboard
- Landscaped Front and Rear Garden
- Driveway with Carport and Store