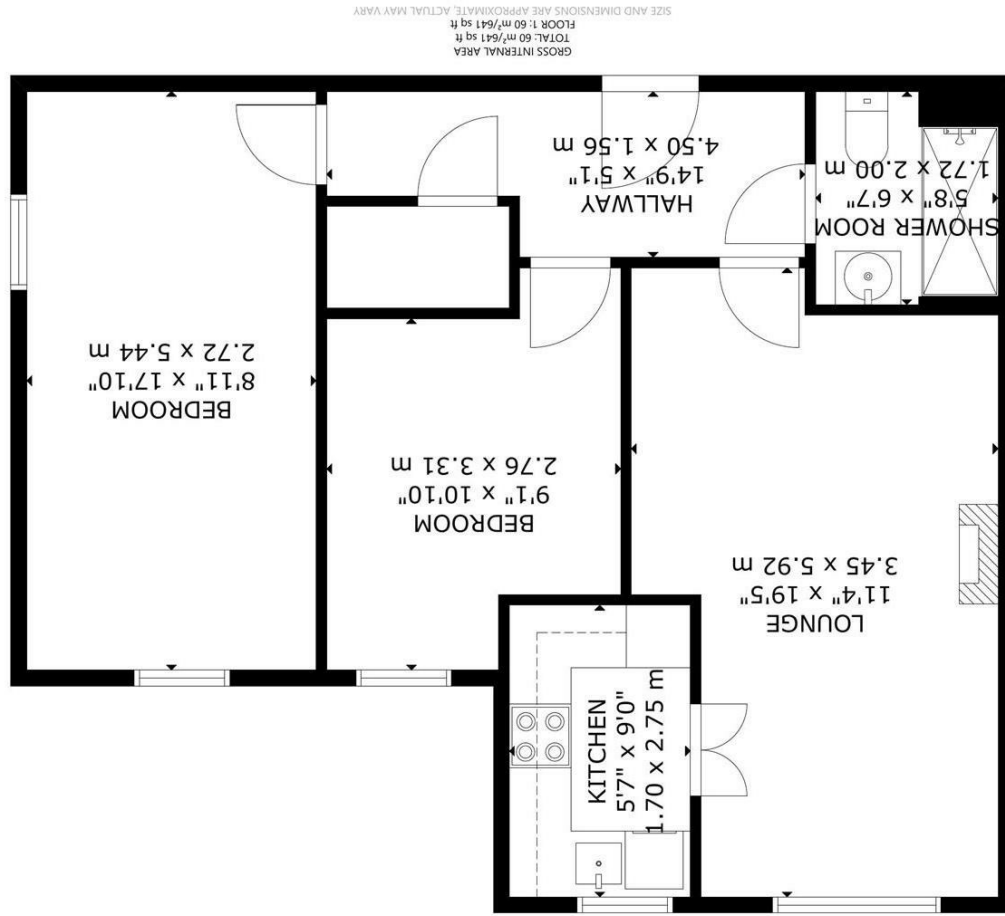
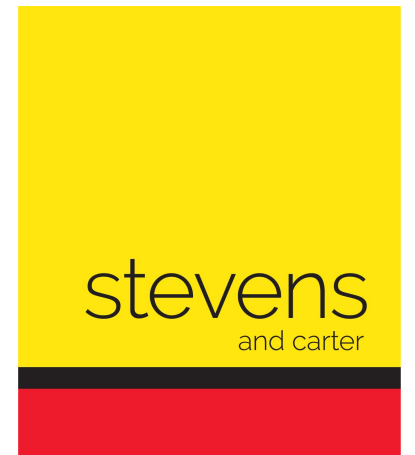


Energy Efficiency Rating	
Current	Potential
England & Wales EU Directive 2002/91/EC Not energy efficient - higher running costs	
A	A
B	B
C	C
D	D
E	E
F	F
G	G



Bellbanks Road, Hailsham



- 3D Virtual Tour
- Onsite Manager
- Communal Gardens
- Short Walk To Bus Stop
- Shops/Cafes Nearby
- Residents Parking
- Social Activities
- Long Lease
- Lounge-Diner



Leasehold

£130,000

2 BEDROOM 1 RECEPTION 1 BATHROOM 0 GARAGE

Bellbanks Road, Hailsham

Bellbanks Road, Hailsham

DESCRIPTION

3D Virtual Tour | Rare Two Bedroomed | Onsite Social Activities | Communal Gardens
| Onsite Manager | Guest Suite | Stair Lift | Short Walk To Town/Amenities/Bus Route
| Long Lease | Lounge-Diner |

A first floor apartment within the 'annex' of Southdown Court is this well appointed, and rare to come to market, two bedroomed property arranged with an entrance hall, lounge-diner, kitchen, two bedrooms, hall store and shower room. There are communal gardens and residents parking.

The main benefits include:

Resident management staff, Careline alarm service, Lift, Lounge, Laundry, Guest facilities, Garden

Whole site accessible by wheelchair. Access to site easy. Distances: bus stop 300 yards; shop 0.25 mile(s); post office 0.25 mile(s); town centre 0.25 mile(s); GP 0.25 mile(s); social centre 0.25 mile(s).

Weekly Social activities include: Coffee Mornings, Exercise Classes, Bingo, Scrabble, Christian Fellowship, Fashion Shows and Occasional Coach Trips. New residents accepted from 60 years of age. Both cats & dogs generally accepted (subject to terms of lease and landlord permission). Restaurants, post office and bus links.

To explore this wonderful opportunity please take a look at our 3D Virtual Tour teamed up with our professional photography before calling for an accompanied viewing.

There is a Ground rent of £470 PA payable and a Service Charge of £3038 (Both Approximate).



Bellbanks Road, Hailsham

Main Entrance

Stairs with Stair Lift To First Floor Landing

Apartment Entrance Hall 4.50 x 1.56 (14'9" x 5'1")

Lounge-Diner 3.45 x 5.92 (11'3" x 19'5")

Kitchen 1.70 x 2.75 (5'6" x 9'0")

Shower Room 1.72 x 2.00 (5'7" x 6'6")

Main Bedroom 2.72 x 5.44 (8'11" x 17'10")

Second Bedroom 2.76 x 3.31 (9'0" x 10'10")

Hall Storage