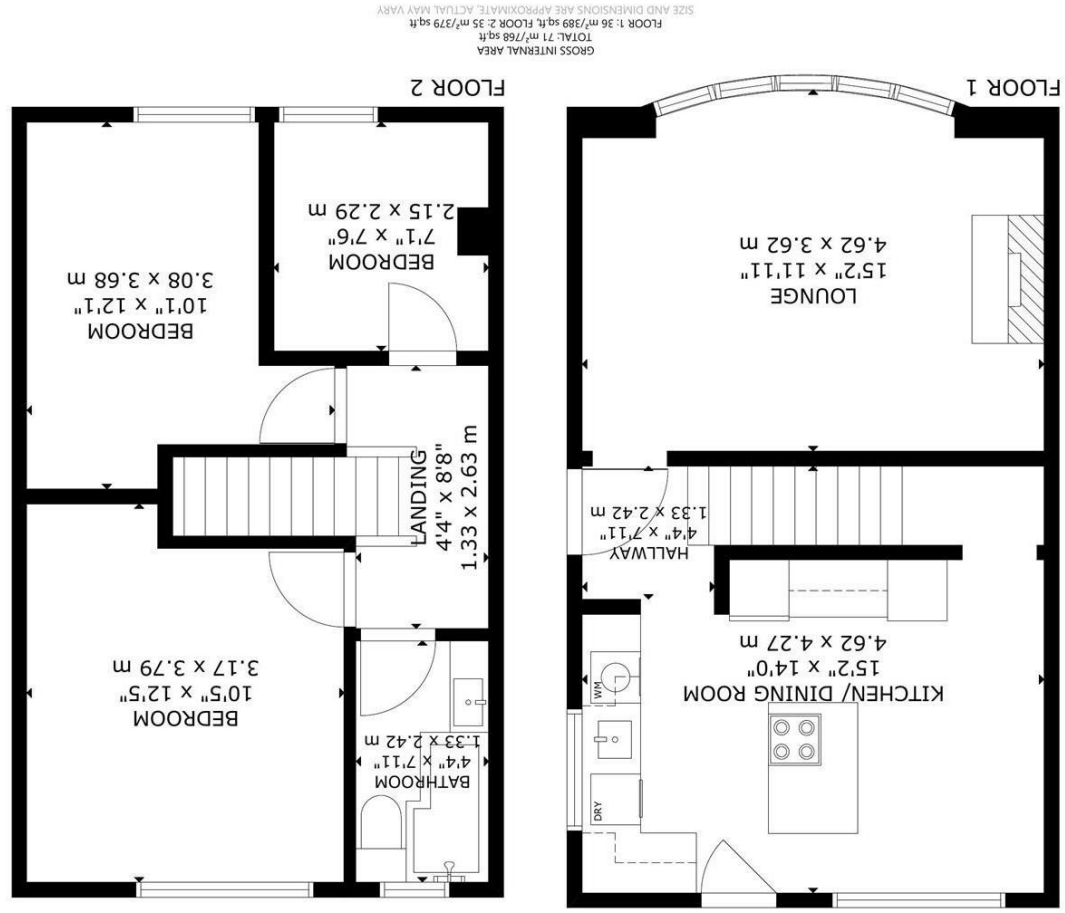
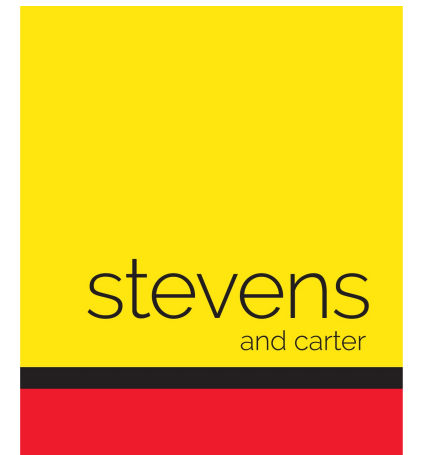


England & Wales	
EU Directive 2002/91/EC	
Not energy efficient - higher running costs	
G	15-20
F	12-15
E	10-12
D	8-10
C	6-8
B	4-6
A	1-3
Very energy efficient - lower running costs	
71	86
86	92 (max)
92 (max)	100
Energy Efficiency Rating	
Current	Potential



Danum Close, Hailsham



- 3D Virtual Tour
- Ideal First Home
- Cul-De-Sac Location
- Immaculate Order
- Kitchen-Diner
- Low Maintenance Garden
- Gas Central heating
- New Boiler
- Modern Bathroom



Freehold

£280,000

Offers Over

3 BEDROOM

2 RECEPTION

1 BATHROOM

0 GARAGE

Danum Close, Hailsham

Danum Close, Hailsham

DESCRIPTION

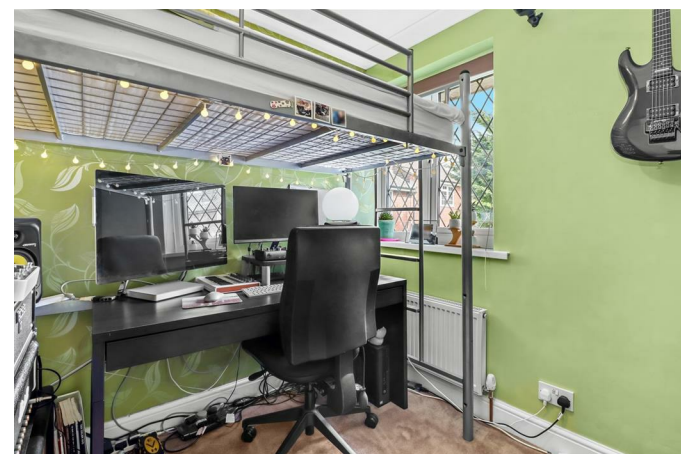
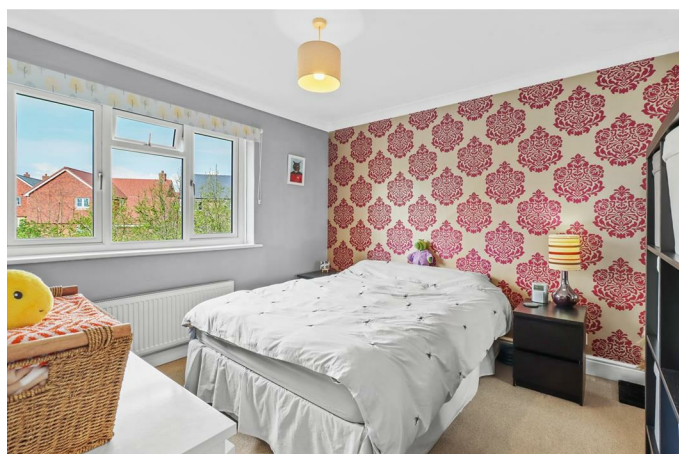
3D Virtual Tour | Cul-De-Sac Location | Kitchen-Diner | Private Garden | Modern Bathroom | Open Fire | Perfect First Home | Gas Central Heating | Modern Bathroom | New Boiler |

Welcome to Danum Close, Hailsham - a charming semi-detached house that is sure to capture your heart! This delightful property boasts 2 reception rooms, perfect for entertaining guests or simply relaxing with your loved ones. With 3 bedrooms, there's space for the whole family to unwind and recharge.

The kitchen diner is a focal point of the house, providing a warm and inviting space to enjoy delicious meals and create lasting memories. The property features a modern bathroom, adding a touch of luxury to your daily routine.

Situated in a peaceful cul de sac, you'll enjoy privacy in this lovely home and the low maintenance garden is ideal for those who appreciate outdoor space without the hassle of extensive upkeep.

With a well-presented interior and a welcoming atmosphere, this property is ready for you to move in and make it your own. Don't miss out on the opportunity to call this house your home - book a viewing today!



Danum Close, Hailsham

Entrance Hall 1.33 x 2.42 (4'4" x 7'11")

Lounge 4.62 x 3.62 (15'1" x 11'10")

Kitchen-Diner 4.62 x 4.27 (15'1" x 14'0")

Stairs To Landing

Landing 1.33 x 2.63 (4'4" x 8'7")

Main Bedroom 3.17 x 3.79 (10'4" x 12'5")

Second Bedroom 3.08 x 3.68 (10'1" x 12'0")

Third Bedroom 2.15 x 2.29 (7'0" x 7'6")

Bathroom 1.33 x 2.42 (4'4" x 7'11")

Rear Garden