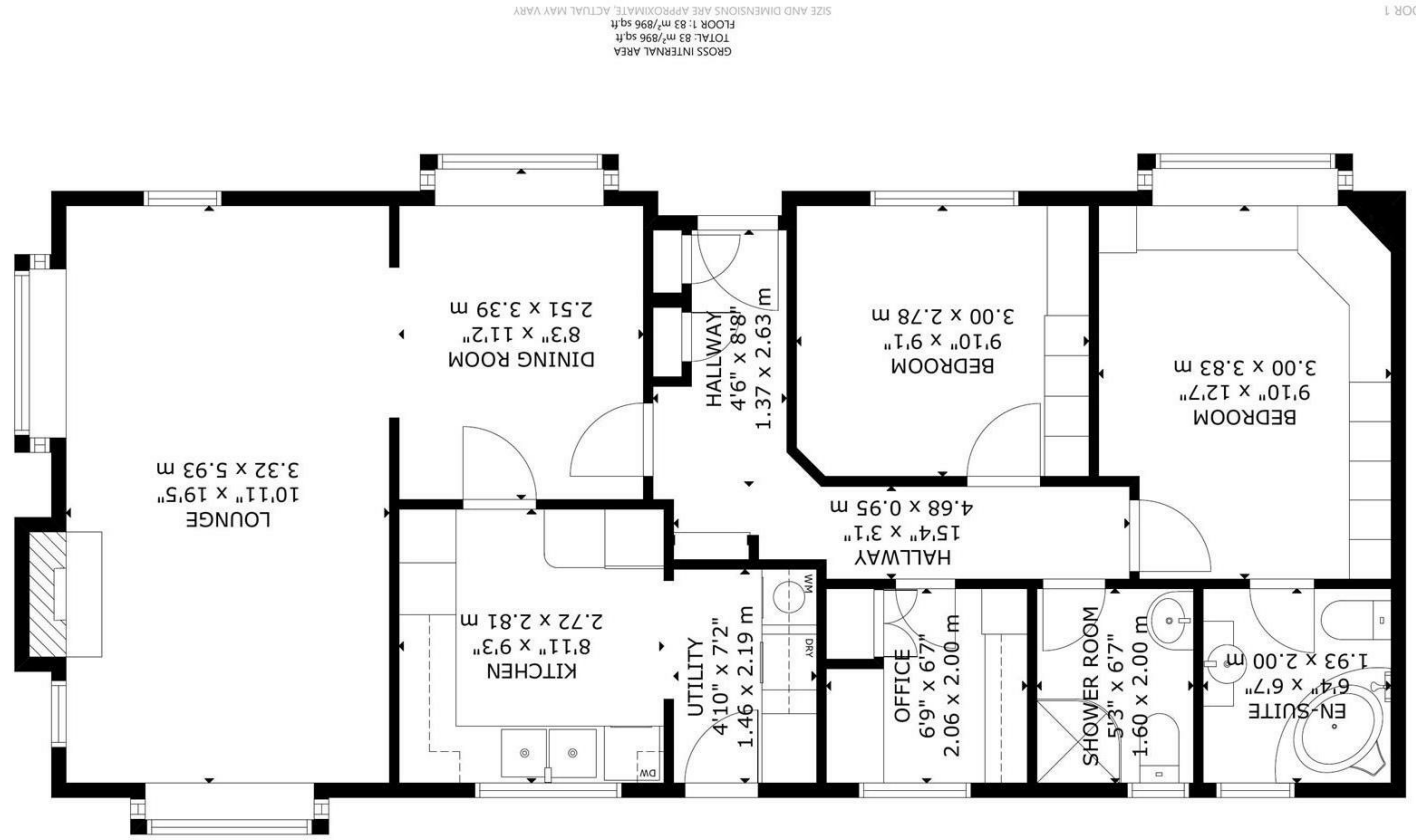
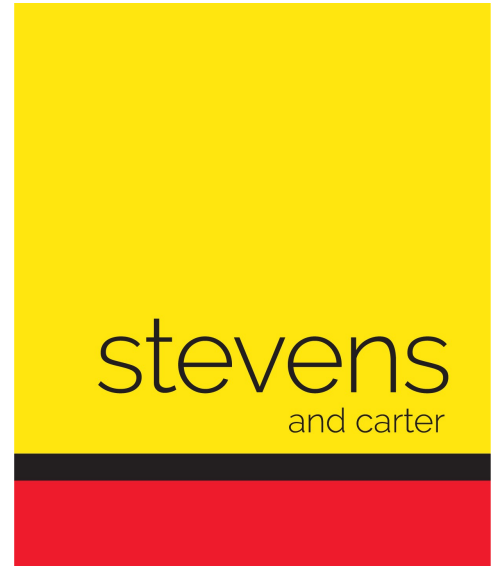


FLOOR 1



Hérons Way, Deanland Wood Park



- 3D Virtual Tour
- Residential Park Home
- Award Winning Park
- 45x20 FT
- Lissett Linden Cottage
- Wrap Around Garden
- Onsite Amenities
- Driveway & Garage
- Study/Third Bed
- Utility Room



Freehold

£250,000

2 BEDROOM 2 RECEPTION 2 BATHROOM 1 GARAGE

Hérons Way, Deanland Wood Park

## Herons Way, Deanland Wood Park

---

### DESCRIPTION

3D Virtual Tour | Mature Plot | 45x20 FT | Residential Park Home | Driveway & Garage | Vacant Possession | On Site Amenities | Study | Utility Room | Ensuite Bathroom | GCH | Council Tax Band A |

Later life living at its best.....Occupying a thoughtfully landscaped plot within the award winning Deanland Wood Park, is this well presented 45x20 FT Linden Lissett Cottage being sold chain free.

Deanland Wood Park is arguably one of the prettiest and most regarded sites locally and offers onsite amenities including an Inn serving great food, a shop and post office, bowls club and social hall. There are woodland and countryside walks to explore.

Inside it is arranged with an entrance hall, dining room, front aspect lounge area, kitchen with utility room, inner hall, main bedroom with ensuite bathroom, second double bedroom, study and a shower room.

There is a monthly pitch fee payable of approx. £267 pcm including fresh and waste water.

To explore this wonderful opportunity please take a look at our 3d virtual tour teamed up with our professional photography before calling us for an accompanied viewing.



## Herons Way, Deanland Wood Park

---

Entrance Hall 1.37 x 2.63 (4'5" x 8'7")

Kitchen 2.72 x 2.81 (8'11" x 9'2")

Utility Room 1.46 x 2.19 (4'9" x 7'2")

Dining Room 2.51 x 3.39 (8'2" x 11'1")

Lounge 3.32 x 5.93 (10'10" x 19'5")

Inner Hall 4.68 x 0.95 (15'4" x 3'1")

Main Bedroom 3.00 x 3.83 (9'10" x 12'6")

Ensuite Bathroom 1.93 x 2.00 (6'3" x 6'6")

Second Bedroom 3.00 x 2.78 (9'10" x 9'1")

Study/Third Bedroom 2.06 x 2.00 (6'9" x 6'6")

Shower Room 1.60 x 2.00 (5'2" x 6'6")

Driveway & Garage

Wrap Around Gardens