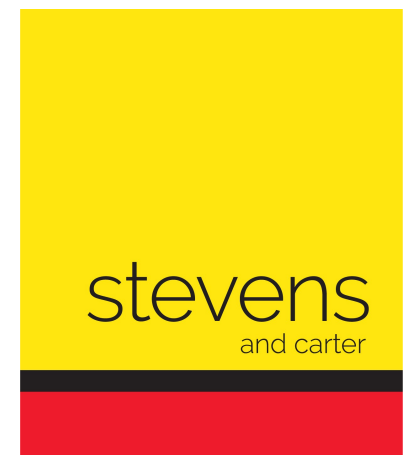


Bradley Drive, Hailsham



- 3D Virtual Tour
- 1200 SQFT Over Three Floors
- Roebuck Park
- Access To Green Spaces
- Two parking Spaces
- Kitchen-Breakfast Room
- Very Well Presented
- Bathroom and Ensuite Shower
- 23FT Main Bedroom
- Downstairs WC



Freehold

£350,000

4 BEDROOM 2 RECEPTION 2 BATHROOM 0 GARAGE

Bradley Drive, Hailsham

Bradley Drive, Hailsham

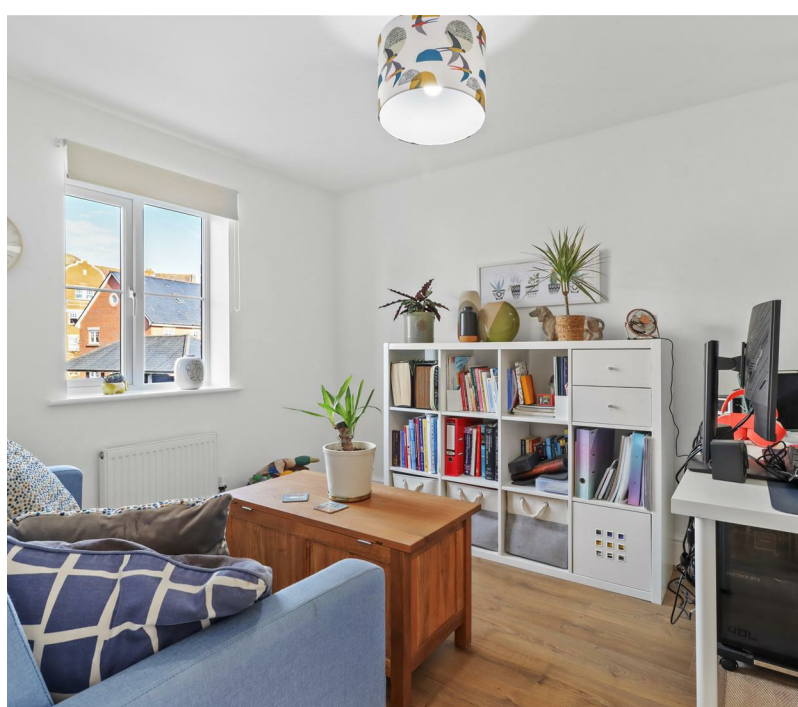
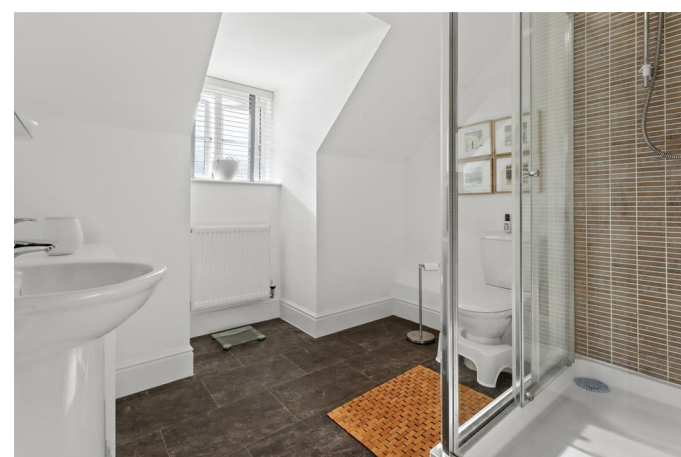
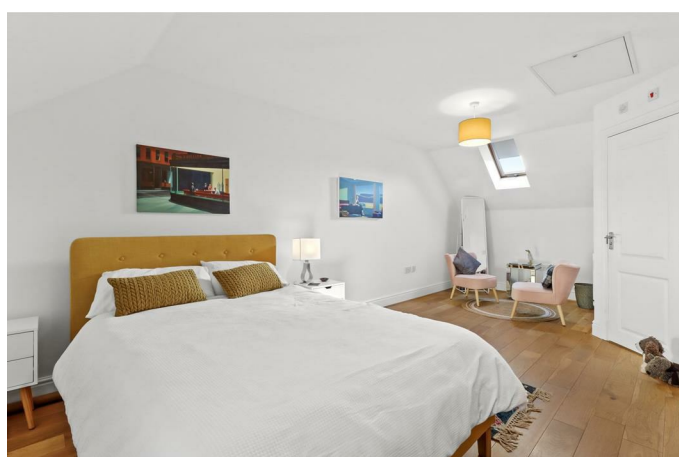
DESCRIPTION

3D Virtual Tour | 1200 SQFT Over Three Floors | Kitchen-Breakfast Room | Prestigious Roebuck Park | Acres of Green Spaces | Two Parking Spaces | 23FT Main Bedroom With Ensuite | Immaculate Presentation |

Situated within the prestigious Roebuck Park Development is this beautifully presented three storey semi-detached house complete with off road parking, a rear garden and just minutes away from acres of parkland.

Inside this wonderful house is arranged with an entrance hall, kitchen-breakfast room, lounge, wc, stairs to the first floor, two double bedrooms, a single bedroom and bathroom, stairs to the second floor main bedroom with ensuite shower room. The rear garden is laid mainly to lawn with planter.

To explore this wonderful opportunity please take a look at our 3d virtual tour teamed up with our professional photography before calling us for an accompanied viewing.



Bradley Drive, Hailsham

Entrance Hall 1.07 x 4.81 (3'6" x 15'9")

Kitchen-Diner 2.77 x 5.27 (9'1" x 17'3")

Lounge 4.94 x 3.46 (16'2" x 11'4")

WC

Stairs To First Floor

Landing 1.05 x 3.90 (3'5" x 12'9")

Bedroom Two 2.76 x 3.80 (9'0" x 12'5")

Bedroom Three 2.76 x 3.51 (9'0" x 11'6")

Bedroom Four 2.07 x 2.09 (6'9" x 6'10")

Bathroom 2.07 x 1.72 (6'9" x 5'7")

Two Hall Cupboards

Main Bedroom 3.83 x 7.08 (12'6" x 23'2")

Ensuite 2.63 x 3.00 (8'7" x 9'10")

Rear Garden

Two Parking Spaces