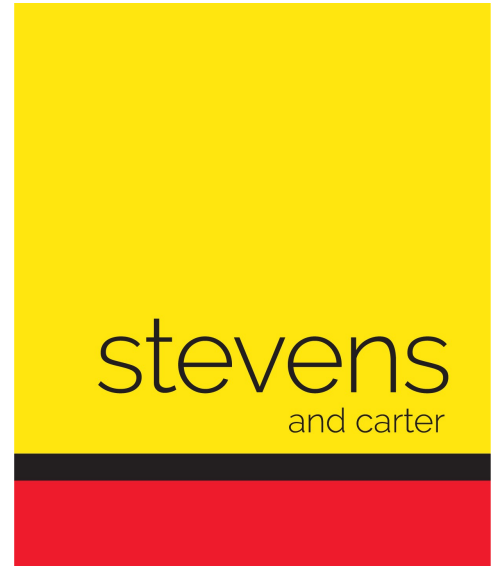


Upper Horsebridge, Hailsham



- Charming EOT Cottage
- Modern Fitted Kitchen
- Period Style Fireplace
- Lounge/Dining Room
- Bathroom/WC
- Maintenance Free Rear Garden
- Gas Central Heating
- UPVC Double Glazing
- Viewing Highly Recommended



Freehold

£250,000

Price Guide

2 BEDROOM

1 RECEPTION

1 BATHROOM

0 GARAGE

Upper Horsebridge, Hailsham

Upper Horsebridge, Hailsham

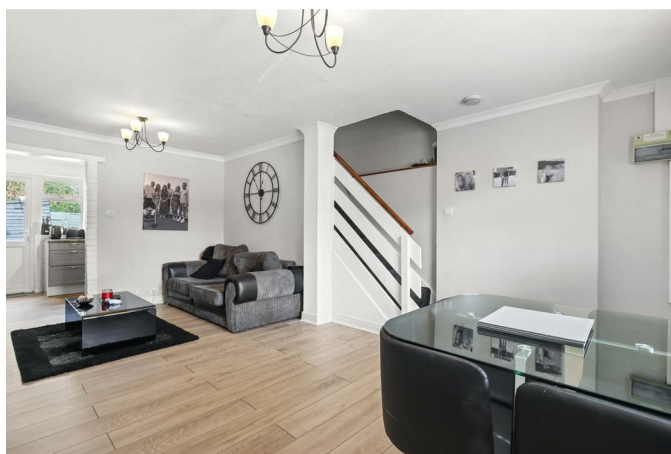
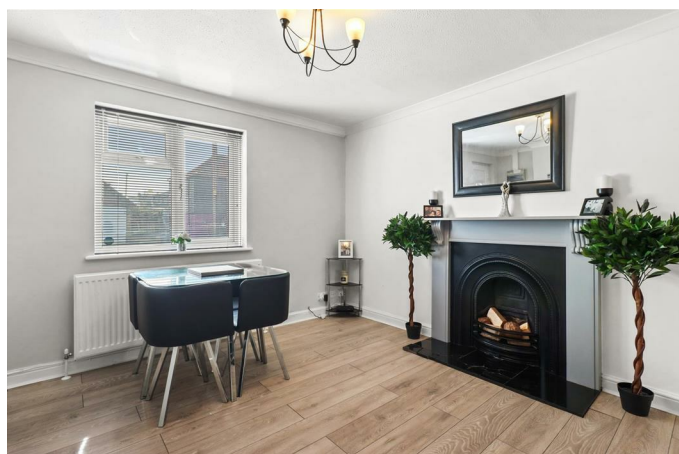
DESCRIPTION

PRICE GUIDE £250,000 - £265,000 | Watch Our On-line 3D Virtual Property Tour | Charming And Very Well Presented Cottage | Bus Route | Closeby Cuckoo Trail Access | Two Bedrooms | Modern Kitchen | Period Style Fireplace | Upstairs Bathroom | Backing Onto Woodland |

Situated within Upper Horsebridge, we are pleased to offer this well presented, two double bedroomed end-terraced Cottage with a pretty, easy to manage courtyard style garden.

Inside it is arranged with an entrance porch leading into the lounge/diner, rear aspect kitchen complete with large pantry cupboard and access into the private rear garden with a gate that leads to a pathway into woodlands beyond. Upstairs there are two double bedrooms and a bathroom. The front of the property has space that is currently used as unofficial parking for a single car.

To explore this wonderful property please take a look through our online 3D Virtual Tour before calling us for an accompanied viewing.



Upper Horsebridge, Hailsham

Entrance Lobby 1.40m x 0.99m (4'7" x 3'2")

Lounge/Dining Room 5.75m x 4.24m (18'10" x 13'10")

Kitchen 4.24m x 2.22m (13'10" x 7'3")

Walk-in Pantry 2.35m x 0.95m (7'8" x 3'1")

First Floor Landing 2.23m x 1.83m (7'3" x 6'0")

Bedroom One 4.43m x 3.44m (14'6" x 11'3")

Bedroom Two 4.43m x 2.21m (14'6" x 7'3")

Bathroom 2.47m x 2.23m (8'1" x 7'3")

Outside

Front & Rear Gardens

