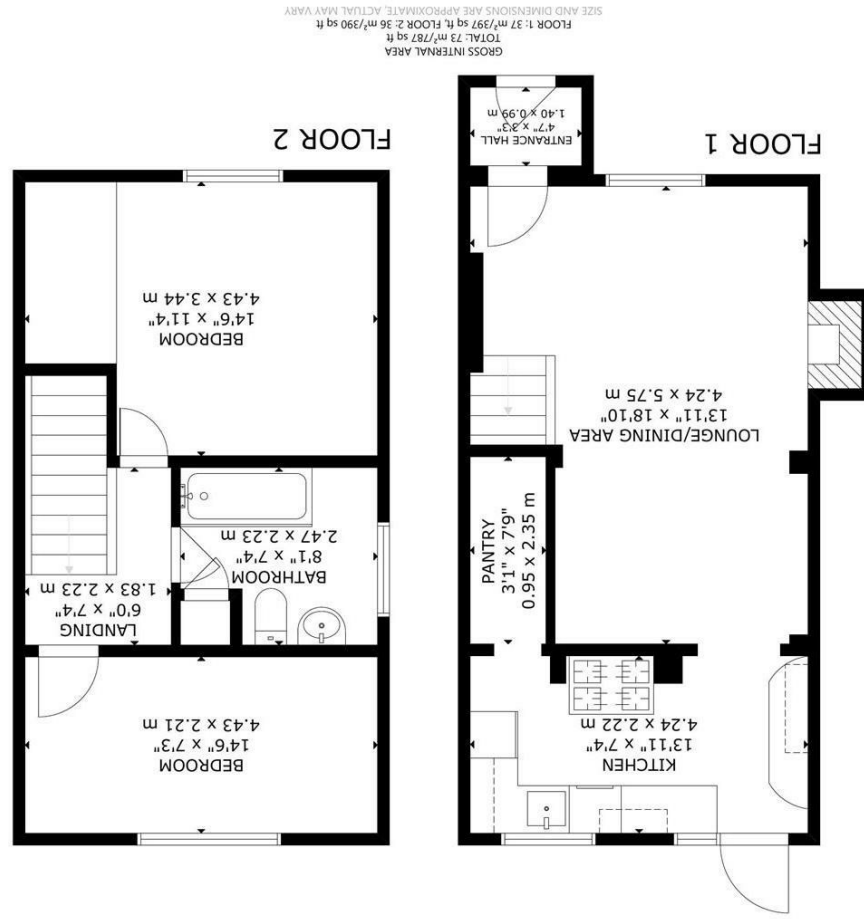
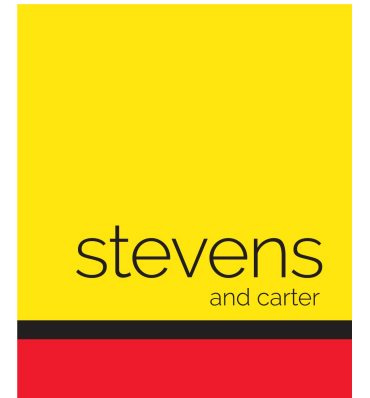


Energy Efficiency Rating	
Very energy efficient - lower running costs	A
Energy efficient - lower running costs	B
Decent energy efficiency - lower running costs	C
Decent energy efficiency - higher running costs	D
Needs to be improved - higher running costs	E
Needs to be improved - higher running costs	F
Needs to be improved - higher running costs	G
Needs to be improved - higher running costs	H
Needs to be improved - higher running costs	I
Needs to be improved - higher running costs	J
Needs to be improved - higher running costs	K
Needs to be improved - higher running costs	L
Needs to be improved - higher running costs	M
Needs to be improved - higher running costs	N
Needs to be improved - higher running costs	O
Needs to be improved - higher running costs	P
Needs to be improved - higher running costs	Q
Needs to be improved - higher running costs	R
Needs to be improved - higher running costs	S
Needs to be improved - higher running costs	T
Needs to be improved - higher running costs	U
Needs to be improved - higher running costs	V
Needs to be improved - higher running costs	W
Needs to be improved - higher running costs	X
Needs to be improved - higher running costs	Y
Needs to be improved - higher running costs	Z

Environmental Impact (CO ₂) Rating	
Very low environmental impact - lower CO ₂ emissions	A
Low environmental impact - lower CO ₂ emissions	B
Decent environmental impact - lower CO ₂ emissions	C
Decent environmental impact - higher CO ₂ emissions	D
Needs to be improved - higher CO ₂ emissions	E
Needs to be improved - higher CO ₂ emissions	F
Needs to be improved - higher CO ₂ emissions	G
Needs to be improved - higher CO ₂ emissions	H
Needs to be improved - higher CO ₂ emissions	I
Needs to be improved - higher CO ₂ emissions	J
Needs to be improved - higher CO ₂ emissions	K
Needs to be improved - higher CO ₂ emissions	L
Needs to be improved - higher CO ₂ emissions	M
Needs to be improved - higher CO ₂ emissions	N
Needs to be improved - higher CO ₂ emissions	O
Needs to be improved - higher CO ₂ emissions	P
Needs to be improved - higher CO ₂ emissions	Q
Needs to be improved - higher CO ₂ emissions	R
Needs to be improved - higher CO ₂ emissions	S
Needs to be improved - higher CO ₂ emissions	T
Needs to be improved - higher CO ₂ emissions	U
Needs to be improved - higher CO ₂ emissions	V
Needs to be improved - higher CO ₂ emissions	W
Needs to be improved - higher CO ₂ emissions	X
Needs to be improved - higher CO ₂ emissions	Y
Needs to be improved - higher CO ₂ emissions	Z



Upper Horsebridge, Hailsham



Country Homes

- Charming EOT Cottage
- Modern Fitted Kitchen
- Period Style Fireplace
- Lounge/Ding Room
- Upstairs Bathroom
- Maintenance Rear Garden
- Gas Central Heating
- uPVC Double Glazing
- Highly Recommended



Freehold

£265,000

2 BEDROOM 1 RECEPTION 1 BATHROOM 0 GARAGE

Upper Horsebridge, Hailsham

Upper Horsebridge, Hailsham

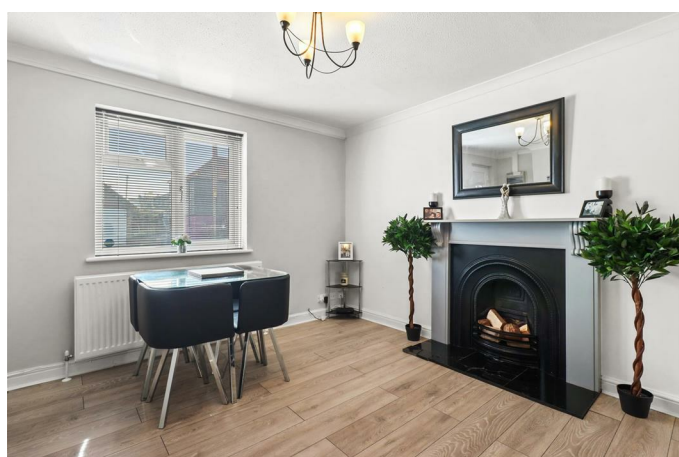
DESCRIPTION

Watch Our On-line 3D Virtual Property Tour | Charming And Very Well Presented Cottage | Bus Route | Closeby Cuckoo Trail Access | Two Bedrooms | Modern Kitchen | Period Style Fireplace | Upstairs Bathroom | Backing Onto Woodland |

Situated within Upper Horsebridge, we are pleased to offer this well presented, two double bedroomed end-terraced Cottage with a pretty, easy to manage courtyard style garden.

Inside it is arranged with an entrance porch leading into the lounge/diner, rear aspect kitchen complete with large pantry cupboard and access into the private rear garden with a gate that leads to a pathway into woodlands beyond. Upstairs there are two double bedrooms and a bathroom. The front of the property has space that is currently used as unofficial parking a single car.

To explore this wonderful property please take a look through our online 3D Virtual Tour before calling us for an accompanied viewing.



Upper Horsebridge, Hailsham

Entrance Lobby 1.40m x 0.99m (4'7" x 3'2")

Lounge/Dining Room 5.75m x 4.24m (18'10" x 13'10")

Kitchen 4.24m x 2.22m (13'10" x 7'3")

Walk-in Pantry 2.35m x 0.95m (7'8" x 3'1")

First Floor Landing 2.23m x 1.83m (7'3" x 6'0")

Bedroom One 4.43m x 3.44m (14'6" x 11'3")

Bedroom Two 4.43m x 2.21m (14'6" x 7'3")

Bathroom 2.47m x 2.23m (8'1" x 7'3")

Outside

Front & Rear Gardens

