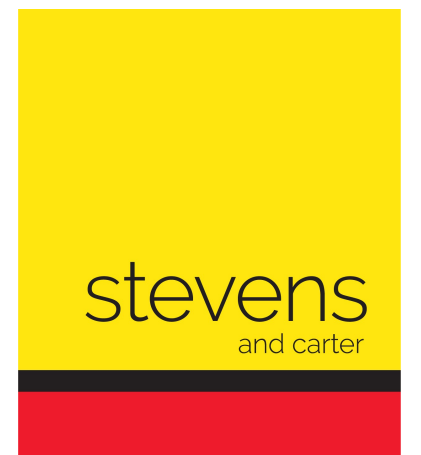


Lower Horsebridge Road, Lower Horsebridge



- 3D Virtual Tour
- Characterful Detached Cottage
- Backing Onto Countryside
- Beautifully Presented
- Characterful & Charming
- Shepherds Hut
- Driveway & Parking
- Kitchen-Dining-Living
- Additional Reception Room
- Utility Room

Freehold

£499,950

3 BEDROOM 2 RECEPTION 1 BATHROOM 1 GARAGE

Lower Horsebridge Road, Lower Horsebridge

## Lower Horsebridge Road, Lower Horsebridge

---

### DESCRIPTION

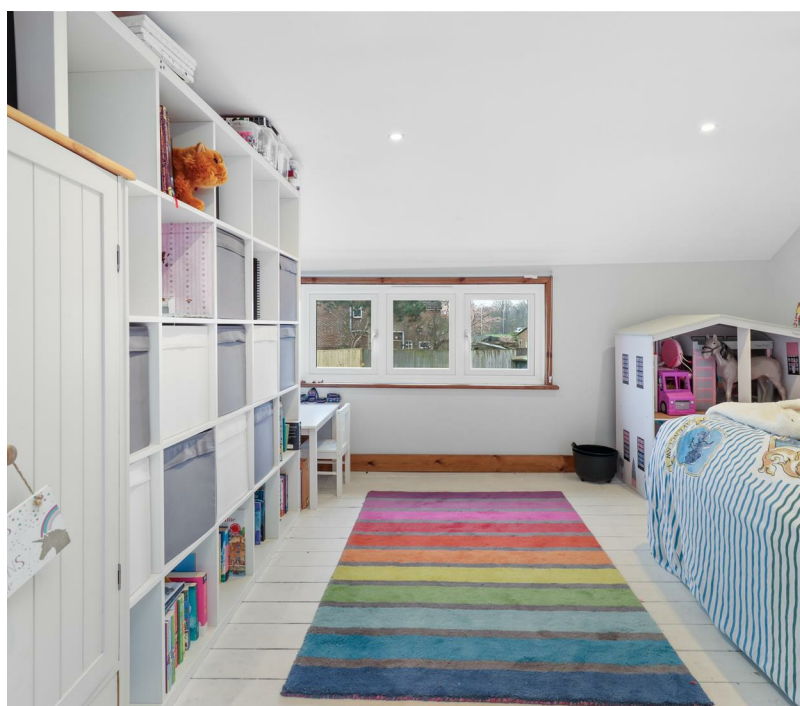
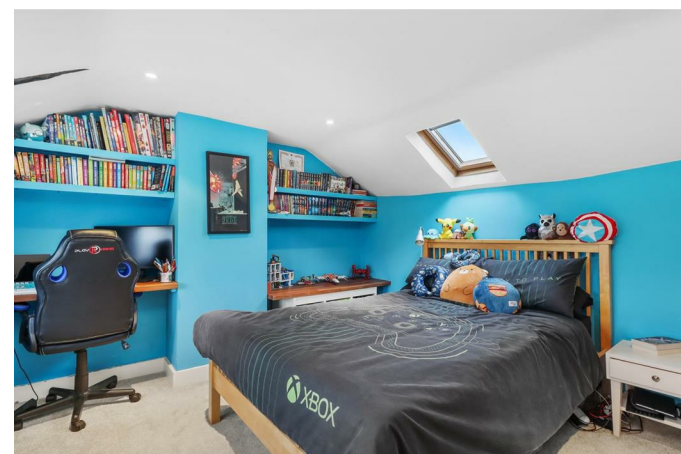
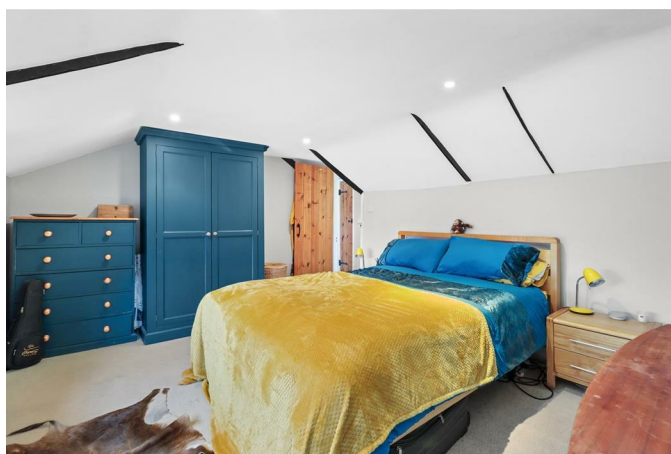
3D Virtual Tour | Out of Town Location | Backing Onto Open Countryside | Characterful & Charming | Beautifully Presented | Off Road Parking | Garage | Kitchen-Breakfast-Living | Separate Reception Room | Shepherds Hut | New UPVC Double Glazing | Gas Central Heating | Utility Room | All Double Bedrooms |

Situated within the fringes of town known as Lower Horsebridge and backing onto acres of open countryside is this characterful and charming period detached cottage complete with features such as log burners, a mature garden with newly erected insulated Shepherds Hut with its own shower room/WC, off road parking and garage.

Rose Cottage has been lovingly cared for and improved by its present owners with extensive works having been carried out to improve the cottage recently including a major roof overhaul and newly installed uPVC double glazing throughout.

Inside it is arranged with a spacious dual aspect lounge, kitchen-living-family room that flows all as one as well as a separate utility room with wc. Upstairs there are three well sized double bedrooms and a family bathroom.

To explore this wonderful opportunity please take a look at our 3d virtual tour teamed up with our professional photography before calling for an accompanied viewing.



## Lower Horsebridge Road, Lower Horsebridge

---

### Entrance

Lounge 5.49 x 4.29 (18'0" x 14'0")

Hallway 4.03 x 1.28 (13'2" x 4'2")

Kitchen 5.23 x 1.97 (17'1" x 6'5")

Dining Area 3.84 x 3.78 (12'7" x 12'4")

Family Room 4.59 x 3.78 (15'0" x 12'4")

Utility Room 1.57 x 3.03 (5'1" x 9'11")

### WC

### Stairs To First Floor

Landing 1.13 x 4.41 (3'8" x 14'5")

Bedroom Two 4.05 x 3.21 (13'3" x 10'6")

Landing Area 3.68 x 1.52 (12'0" x 4'11")

Main Bedroom 4.73 x 3.38 (15'6" x 11'1")

Third Bedroom 3.54 x 3.38 (11'7" x 11'1")

Bathroom 3.04 x 1.94 (9'11" x 6'4")

### Shepherds Hut

### Driveway & Garage

### Rear Garden