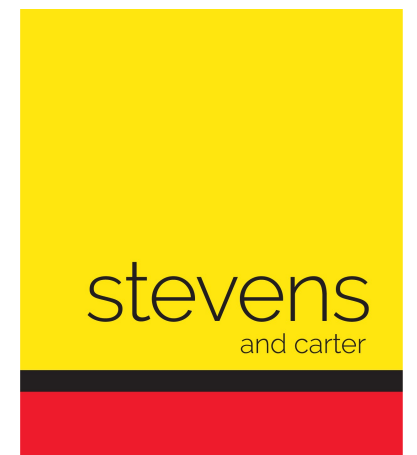


The Sidings, Hailsham



- 3D Virtual Tour
- Ideal First Purchase
- Two Double Bedrooms
- Ensuite Shower Room
- Lounge Diner
- Parking Space
- Walkable To Town
- Nearby Green Spaces
- Small Development
- GCH

Leasehold

£200,000

2 BEDROOM 1 RECEPTION 1 BATHROOM 0 GARAGE

The Sidings, Hailsham

The Sidings, Hailsham

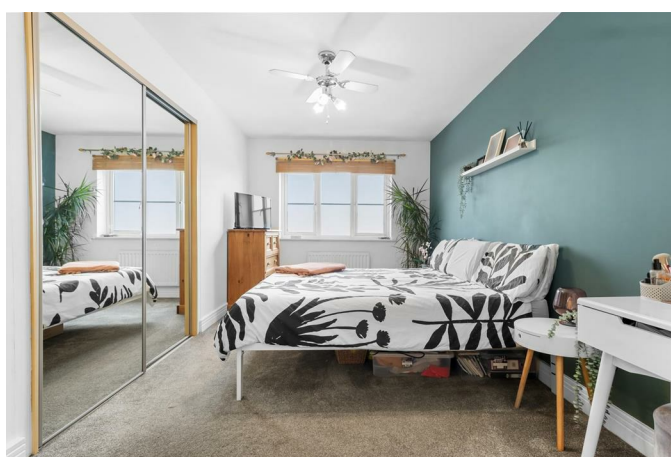
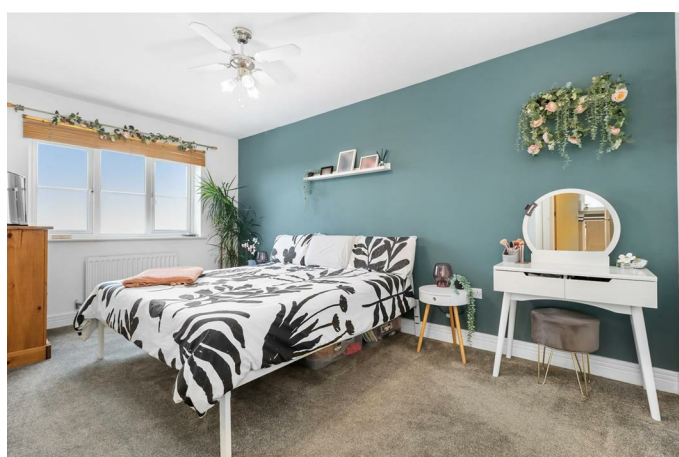
DESCRIPTION

3D Virtual Tour | First Floor Apartment | Immaculate Presentation | Spacious | Ensuite To Main Bedroom | Second Double Bedroom | Parking Space | Long Lease | Lounge-Diner | Walkable To Greenspaces | Walkable To Town | GCH | Pets Allowed |

Situated close to all the amenities that Hailsham's Town Centre offers, is this first floor spacious apartment considered ideal for either first time buyers, down-sizers or investors. The apartment is presented in immaculate order throughout and is arranged with an entrance hall, lounge/dining room, kitchen, two good size double bedrooms, one with en-suite shower room and a bathroom off the hall. There is an allocated parking bay, gas fired central heating and uPVC double glazing.

There is Approx. 111 years remaining on the lease term and we are advised there is £100 PA ground rent payable and Approx. £200PCM Service charge.

To explore this wonderful opportunity please call us to arrange an accompanied viewing.



The Sidings, Hailsham

- Communal Hall
- Stairwell To Apartment Entrance
- Hallway 2.56 x 5.03 (8'4" x 16'6")
- Lounge-Diner 5.40 x 4.48 (17'8" x 14'8")
- Kitchen 3.18 x 2.43 (10'5" x 7'11")
- Main Bedroom 2.75 x 4.81 (9'0" x 15'9")
- Ensuite Shower Room 1.96 x 2.26 (6'5" x 7'4")
- Bathroom 1.69 x 2.26 (5'6" x 7'4")
- Second Bedroom 3.18 x 2.50 (10'5" x 8'2")
- Parking Space