

St Albans Office  
10 High Street, St Albans  
Herts AL3 4EL  
01727 228428  
stalbans@cassidyandtate.co.uk

Marshalswick Office  
59 The Quadrant, St Albans,  
Herts AL4 9RD  
01727 832383  
marshalswick@cassidyandtate.co.uk

Wheathampstead Office  
39 High Street, Wheathampstead,  
Herts AL4 8BB  
01582 831200  
wheathampstead@cassidyandtate.co.uk

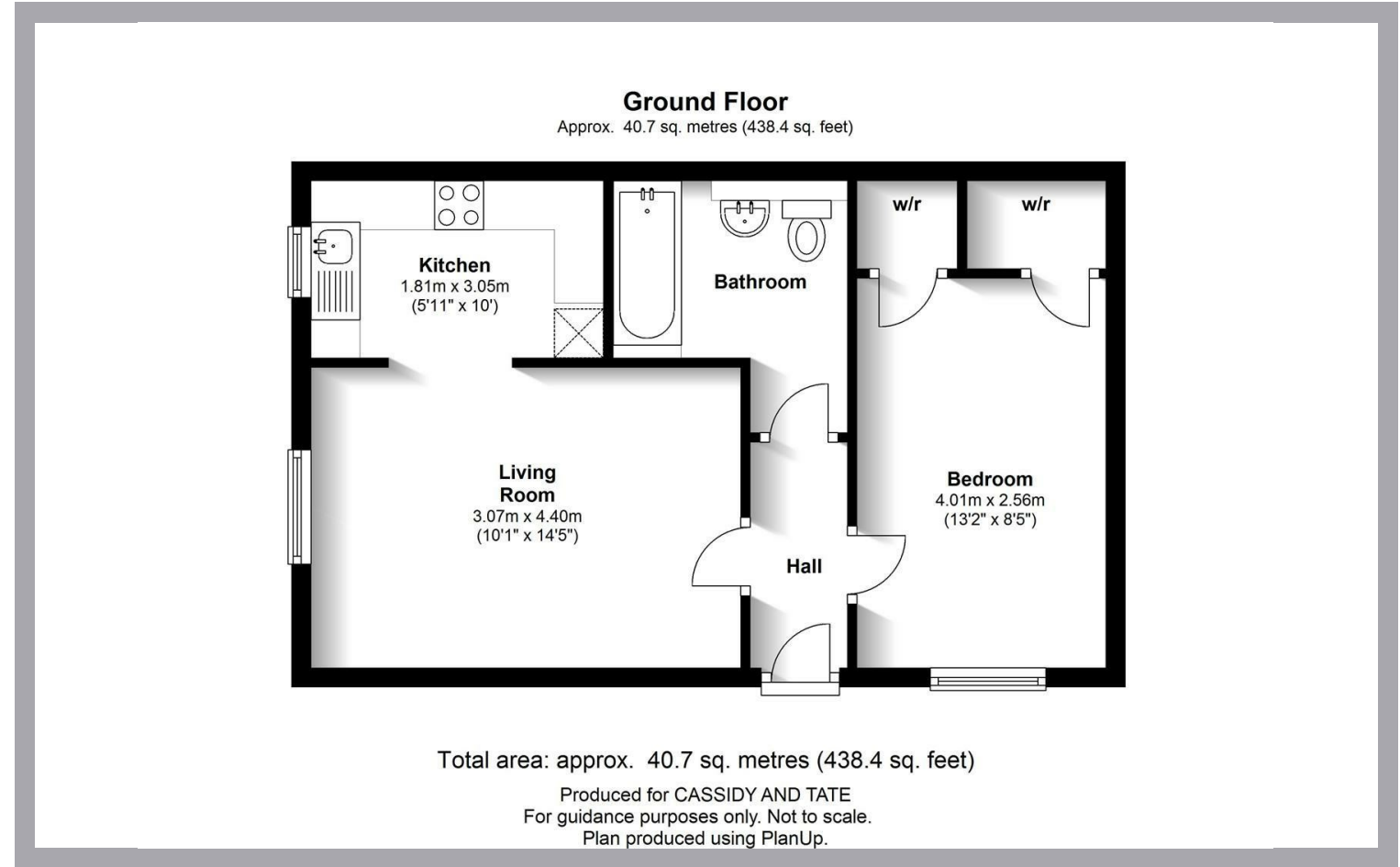
Knightsbridge Office  
45 Pont Street, Knightsbridge  
London SW1X 0BD  
020 7629 9966  
26@theknightsbridgeoffice.co.uk

Cassidy  
& Tate  
Your Local Experts



Award Winning Agency

ABBOTT JOHN MEWS  
WHEATHAMPSTEAD  
AL4 8DG



Cassidy & Tate have taken all reasonable steps to ensure the accuracy of the details supplied in our marketing material however, details are provided as a guide only and we advise prospective purchasers to confirm details upon inspection of the property. Cassidy & Tate will not be held liable for any costs which are incurred as a result of discrepancies.

# All The Ingredients Needed For A Fabulous Lifestyle

A well presented first floor maisonette set within a cul-de-sac just off the High Street. The property benefits from a modern kitchen and bathroom. The accommodation comprises Living room, kitchen, bathroom, double bedroom, communal gardens and allocated parking. Wheathampstead is a thriving village surrounded by rolling countryside yet close to all major communication links including the Thameslink railway station less than three miles away in Harpenden. There are three primary schools within the village. The new Katherine Warington senior school is less than three miles away.



## Specialists in Bespoke Properties

- Living Room
- Bedroom
- Parking
- Very central
- Kitchen
- Bathroom
- Cul-de-sac location

| Energy Efficiency Rating                    | Current                 | Potential |
|---|-------------------------|-----------|
| Very energy efficient - lower running costs |                         |           |
| (92 plus) A                                 |                         |           |
| (81-91) B                                   |                         |           |
| (69-80) C                                   |                         |           |
| (55-68) D                                   |                         |           |
| (39-54) E                                   |                         |           |
| (21-38) F                                   |                         |           |
| (1-20) G                                    |                         |           |
| Not energy efficient - higher running costs |                         |           |
| <b>England &amp; Wales</b>                  | 71                      | 73        |
|   | EU Directive 2002/91/EC |           |

| Environmental Impact (CO <sub>2</sub> ) Rating                  | Current                 | Potential |
|---|-------------------------|-----------|
| Very environmentally friendly - lower CO <sub>2</sub> emissions |                         |           |
| (92 plus) A   |                         |           |
| (81-91) B   |                         |           |
| (69-80) C   |                         |           |
| (55-68) D   |                         |           |
| (39-54) E   |                         |           |
| (21-38) F   |                         |           |
| (1-20) G  |                         |           |
| Not environmentally friendly - higher CO <sub>2</sub> emissions |                         |           |
| <b>England &amp; Wales</b>                                      | 1                       | 1         |
|   | EU Directive 2002/91/EC |           |

