



Flat 2, Prospect Court, Alexandra Road

Market Drayton, Shropshire, TF9 3HP

- Modern Ground Floor Apartment
- Two Bedrooms
- Open Plan Living Space
- Outskirts of Town Centre
- Parking
- Available Immediately



2



1



1

Monthly Rental Of £475

For viewings call 01630 655535

email@follwells.co.uk | follwells.co.uk



Modern ground floor two bedroom apartment situated in a quiet location on the outskirts of Market Drayton town centre. A communal entrance has intercom access and the accommodation includes a large open plan living room with kitchen, two bedrooms and a bathroom. The property is available immediately

Communal Entrance

with intercom access

Hallway

Walk in storage cupboard, intercom to communal entrance door and heating programmer.

Open Plan Living Room

18' 2" x 16' 2" (5.53m x 4.94m)

Fitted kitchen comprising wall and base units with drainer sink. Integrated oven and four ring electric hob with extractor hood over, plumbing for washing machine and space for fridge freezer. Two windows to front elevation and window to side. Two panel heaters.

Bedroom One

10' 4" x 9' 0" (3.16m x 2.75m)

Built in wardrobe, window to front elevation and panel heater.

Bedroom Two

9' 0" x 7' 10" (2.75m x 2.38m)

Window to front elevation and panel heater.

Bathroom

Suite comprising shower bath with curved glass screen, pedestal wash basin and low level WC. Extractor fan and panel heater.

Outside

The car park is accessed off Alexandra Road and there is one parking space for each apartment. The parking spaces are not specifically allocated.



Deposit

The security deposit will be the equivalent of six weeks rent.

Agents Note

Please be advised that no pets are allowed.

Property Management

This property is being managed by Andrews Property Services

Application

Interested parties should complete the full application form which is available from our Market Drayton office. Before any application is made we will need to see original copy of photographic identification (passport or driving licence) along with proof of residence in the form of a utility bill.

Measurements

Please note that room sizes are measured on a wall to wall basis and are approximate.

Viewing

Strictly by appointment through Follwells.



Contact us today

01630 655535

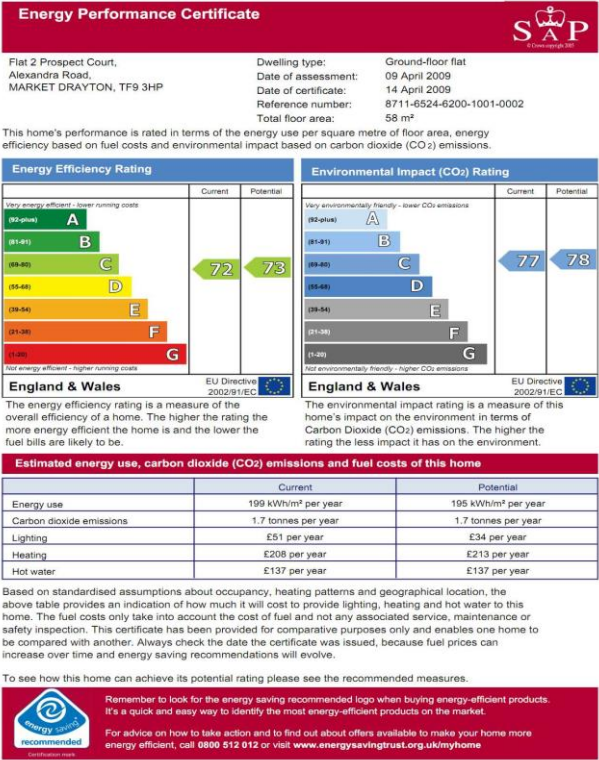
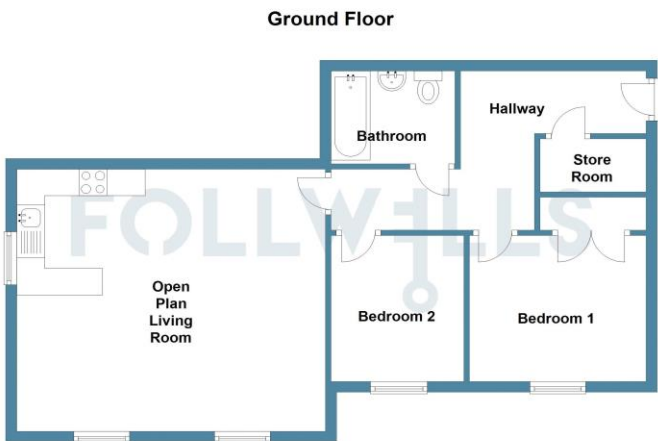
email@follwells.co.uk

www.follwells.co.uk



PROPERTY FLOORPLANS

ENERGY PERFORMANCE CERTIFICATE



Page 1 of 5

NOTE: None of the services, built in appliances, or where applicable, central heating has been tested by Follwells, and we are unable to comment on serviceability. All dimensions given are approximate.

- These particulars do not constitute, nor constitute any part of, an offer or a contract.
- All statements contained in these particulars as to the property are made without responsibility on the part of Follwells or the Vendor.
- None of the statements contained in these particulars as to the property are to be relied on as statements or representation of fact.
- Any intending purchaser must satisfy himself by inspection or otherwise as to the correctness of each of the statements contained in these particulars.
- The vendor does not make or give, and neither Follwells nor any person in their employment has any authority to make or give, any representation or warranty whatever, in relation to this property.

Newcastle Office 35 Ironmarket, NUL, Staffs, ST5 1RP | Market Drayton Office 29 High St, Market Drayton TF9 1QF