



FOLLOWWILLS

2 Talbot Mews, Market Drayton - TF9 1HW

In Excess of £250,000

A well appointed, three bedroom mews house located close the Shropshire Union canal and convenient for Market Drayton town centre. The accommodation is set out over three storeys with an open plan, living and kitchen space on the ground floor with bi-fold doors leading out to the rear garden and also a ground floor WC. The kitchen provides integrated appliances including an electric oven and four ring hob, fridge/freezer and dish washer. There is space and plumbing for a washing machine. On the first floor are two double bedrooms, one of which has an en-suite shower room. On this floor there is also a useful study along with the family bathroom. On the top floor is a master bedroom with built in wardrobe and spacious en-suite shower room.

Outside there is off road parking with one allocated space along with visitor spaces available. An access alleyway leads to the fully enclosed rear garden with artificial lawn, composite decked seating area and shrub borders. There is also a useful store cupboard by the front door which can be locked and has an outside water tap.



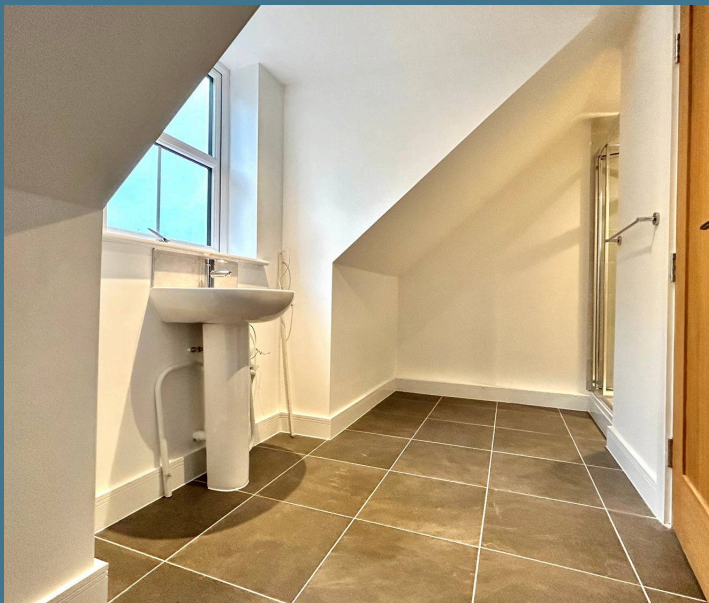


The small Talbot Mews Development was built in 2020 behind the former Talbot Pub next to the Talbot Wharf. The town centre is just half a mile away and provides ample local amenities including supermarkets, specialist and high street stores and a number of bars and restaurants. There are some beautiful rural walks up and down the Shropshire Union Canal with beautiful views and waterside pubs. The property is offered with no upward chain.

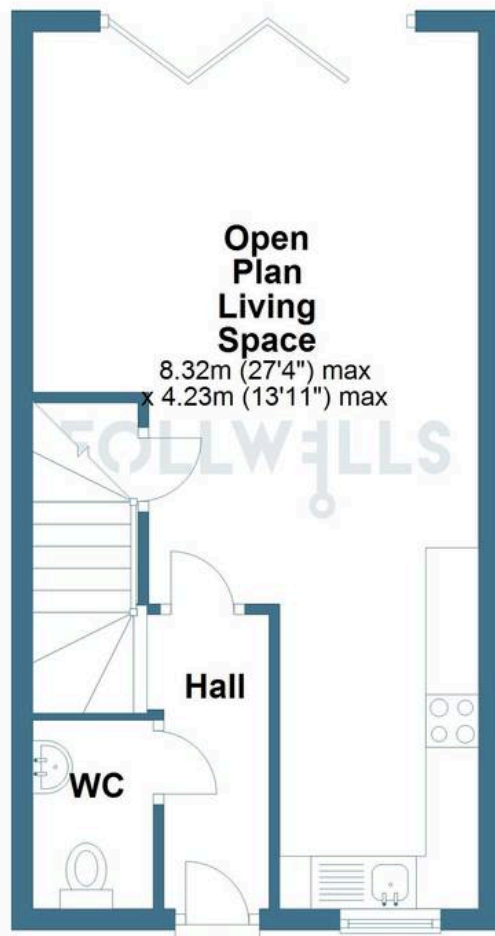
Council Tax band: B

Tenure: Freehold

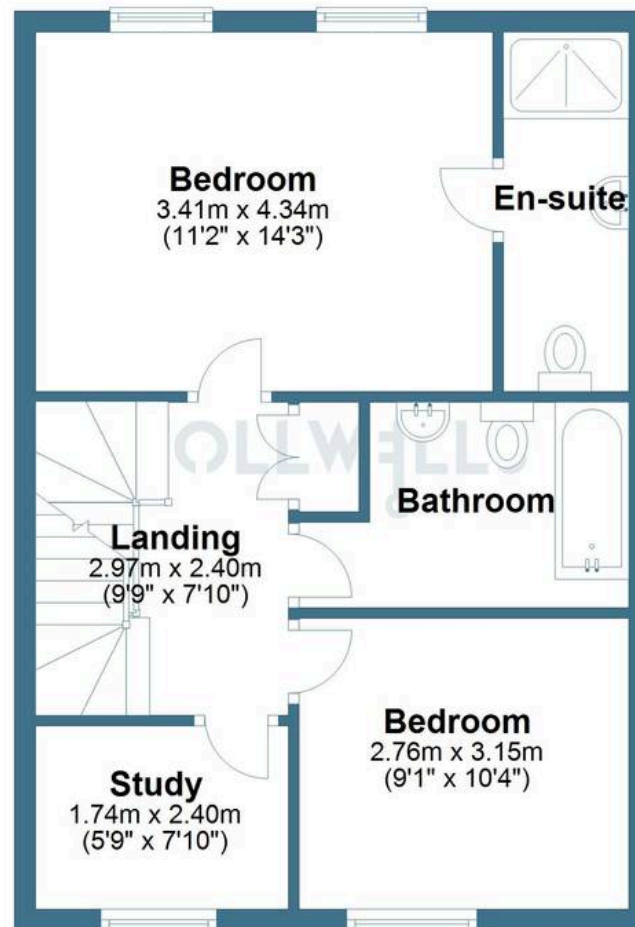
EPC Energy Efficiency Rating: B



Ground Floor



First Floor



Second Floor

