



Apt 3, Arvor West Bay Maenporth Road, Maenporth

Guide Price £280,000



Heather & Lay
The local property experts

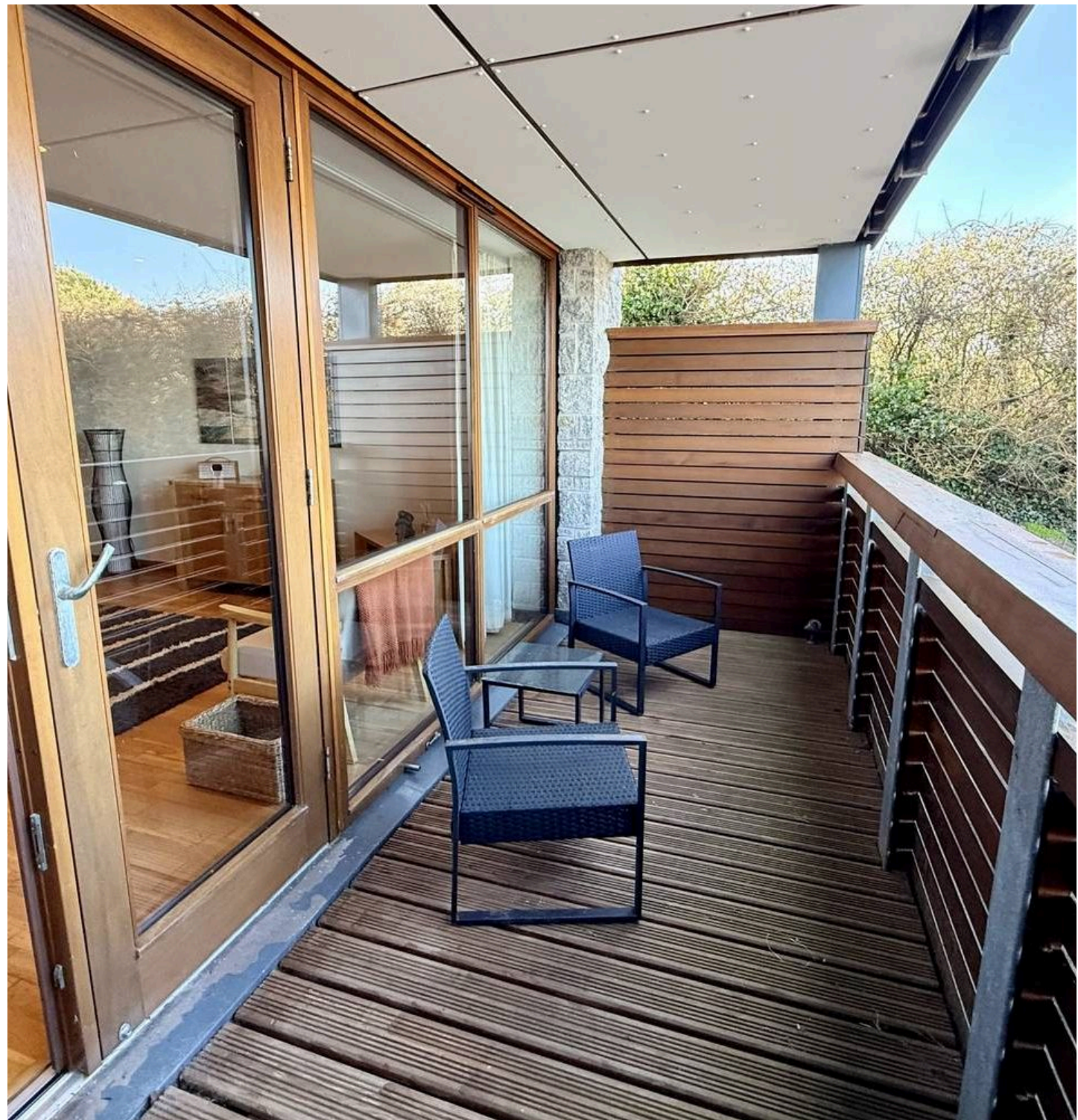
- Ground floor, step free apartment
- Exclusive coastal development
- 2 Double bedrooms (master en suite)
- Superb open plan living space
- Private sun terrace with sea view
- Minutes from Southwest coastal path & sandy beach
- Designated parking space
- Holiday/second home or holiday letting investment

THE PROPERTY

Arvor is an exclusive and stylish development of just 9 apartments, set up above Maenporth beach, in a spectacular coastal position. Number 3 is situated on the ground floor corner with step free access and comfortable, well appointed and beautifully presented accommodation. There are two double bedrooms, the main with en suite shower room, together with an impressive open plan living/dining room and kitchen, opening through French doors onto a generous private sun terrace. Solid oak engineered, under heated floors are fitted throughout and the main bathroom and en suite are tiled. There is a feeling of quality and spaciousness here which uplifts, making Number 3 a wonderful holiday/second home or holiday letting investment opportunity. The apartment has a designated parking space, and several visitor spaces.

THE LOCATION

Arvor enjoys a glorious spot along the coast between Falmouth and the Helford River. Only a few minutes' walk away is the Southwest Coastal Path, overlooking Falmouth Bay and spectacular scenery, whilst just down the road is Maenporth's sandy beach and home to Michaels Caine's Cove restaurant. The development lies 2 miles from Mawnan Smith village with its good local amenities. Falmouth Harbour town is 3.5 miles away and provides wonderful sailing, leisure and shopping facilities, together with a vibrant, year round community spirit





ACCOMMODATION IN DETAIL (ALL MEASUREMENTS ARE APPROXIMATE)

COMMUNAL ENTRANCE

Spacious communal hallway with a letterbox. Ground floor access to apartments one, two and three Door into ...

HALLWAY - Spotlit Oak floor and skirting. Entry phone and door release. Central heating thermostatic controls for underfloor heating. Oak doors and architraves to two bedrooms, bathroom, living/dining room and kitchen. Double doors to airing/utility cupboard housing Megaflor hot water heating. Shelves. Electric consumer unit.

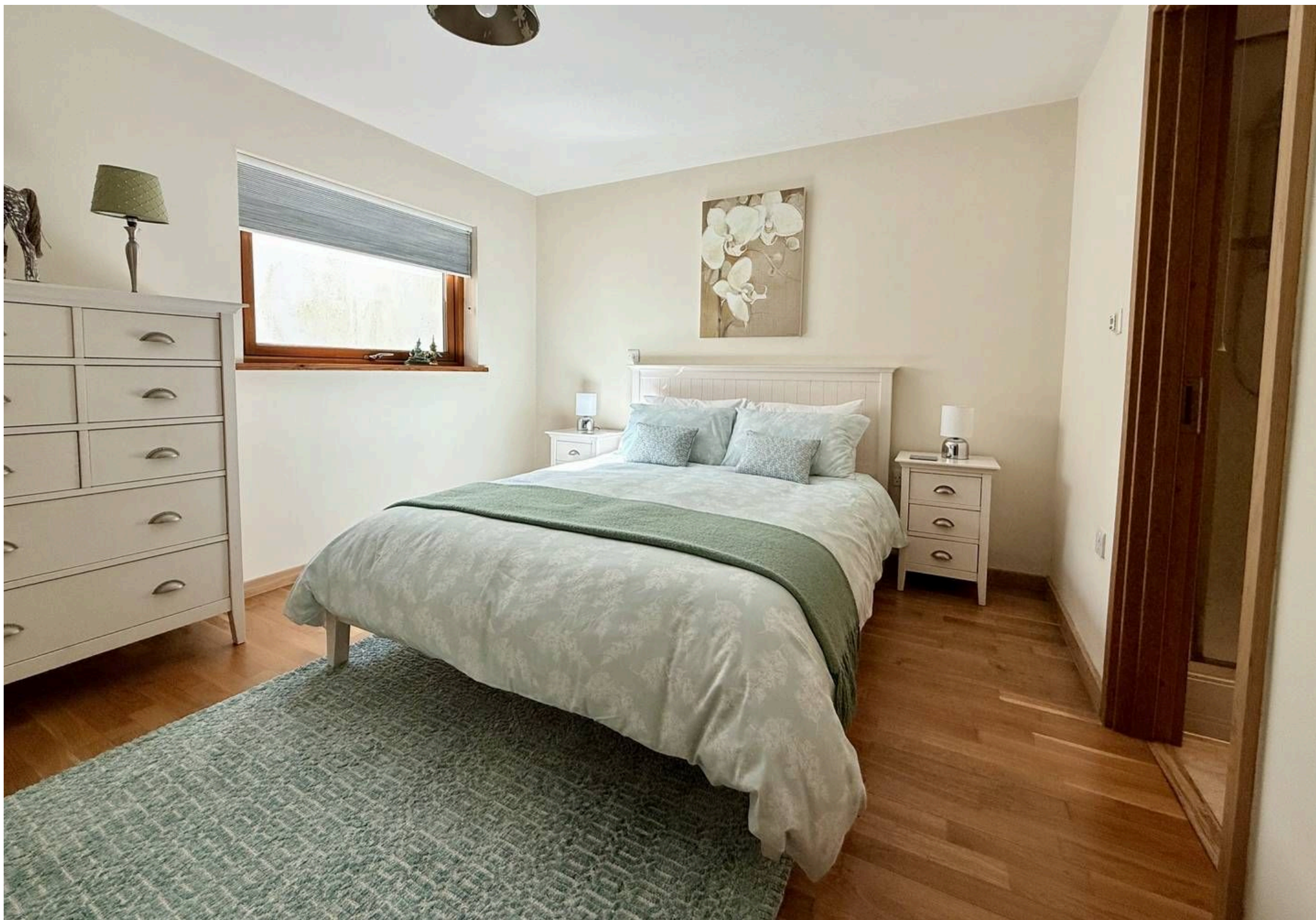
LIVING/DINING ROOM & KITCHEN 23' 5" x 16' 10" (7.14m x 5.13m) - A superb open plan room with hardwood double glazed windows and French doors accessing the terrace, overlooking Arvor grounds towards the coastline between Falmouth & Maenporth beach and to Falmouth Bay extending towards Pendennis Castle & Point to St Mawes & The Roseland Peninsular. This stylish room is spotlit with an oak floor, ample space to dine and lounge, and a superb contemporary kitchen in gloss oatmeal with a flush-front range of base and eye level cupboard and drawers with polished granite worktops and splashback, built in appliances including practical height stainless steel dual oven and grill, a halogen hob with curve glazed and stainless steel extraction hood. Integrated fridge freezer, dishwasher and washing machine. A stunning feature is the curved peninsular, with curved, polished granite worktop, inset one-and-a-half bowl stainless steel sink and drainer, mixer tap, raised glass shelf and pop-up power points.

BALCONY 16' 8" x 8' 8" (5.08m x 2.64m) Private, covered and lit, hardwood decked floor. Views over coast and sea towards, Falmouth, Pendennis & Roseland.

BEDROOM ONE 12' 4" x 10' 10" (3.76m x 3.30m) Hardwood double glazed window to the rear. Continuation of Oak flooring. Central heating digital thermostat controls. Door to ...









EN-SUITE SHOWER ROOM

6' 6" x 5' 8" (1.98m x 1.73m)

Obscure hardwood double glazed window to side. Comfortable floor and wall tiled room with walk in corner shower, dual flush WC with concealed cistern and a Roca hand basin. Ceiling spotlight. Extractor, mirror and shaver point.

BEDROOM TWO

12' 6" (3.81m) x 13' 2" (4.01m) reducing to 11' 3" (3.43m).

Hardwood double glazed window to side, continuation of Oak flooring, Central heating digital thermostatic controls.

BATHROOM

8' 5" x 6' 0" (2.57m x 1.83m)

Fully floor and wall tiled room with white Roca three piece suite, comprising of panelled bath with electric shower over, glass screen, hand wash basin and dual flush WC, shaver point and mirror. Spotlight ceiling. Extractor.

OUTSIDE

COMMUNAL GARDEN

ALLOCATED PARKING

Designated parking for Number 3 & visitor spaces.

TENURE - Leasehold - 999 years from new in 2006. Share of Freehold. Vickery Holman tel. no. 01872 245600 are the agents appointed to manage and maintain the development. Numbers 3's contribution by way of a service charge is, (currently April 2025), £662 per quarter.

AGENTS NOTE Arvor's original planning consent stipulated that apartments are for holiday/second home ownership and holiday letting purposes, and should not be for permanent residency.

Council Tax band: D

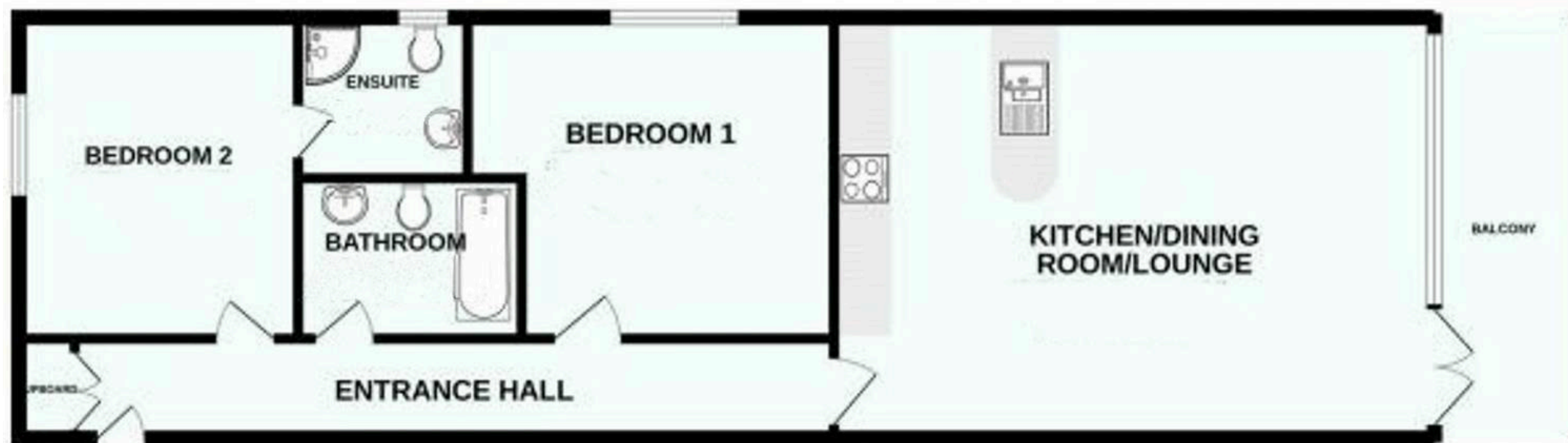
Tenure: Leasehold

EPC Energy Efficiency Rating: D

Services mains electricity, water & drainage



GROUND FLOOR 849 sq.ft. (78.9 sq.m.) approx.



TOTAL FLOOR AREA: 849 sq.ft. (78.9 sq.m.) approx.
Made with Metropix ©2022



Heather & Lay

3 Church Street, Falmouth - TR11 3DN

01326 319767 • sales@heather-lay.co.uk • www.heather-lay.co.uk/



Heather & Lay
The local property experts

These particulars are set out as a general outline in accordance with the Property Misdescriptions Act (1991) only for the guidance of intending purchasers or lessees, and do not constitute any part of an offer or contract. Details are given without any responsibility, and any intending purchasers, lessees or third parties should not rely on them as statements or representations of fact, but must satisfy themselves by inspection or otherwise as to the correctness of each of them. We have not carried out a structural survey and the services, appliances and specific fittings have not been tested. All photographs, measurements, floor plans and distances referred to are given as a guide only and should not be relied upon for the purchase of carpets or any other fixtures or fittings. Gardens, roof terraces, balconies and communal gardens as well as tenure and lease details cannot have their accuracy guaranteed for intending purchasers. Lease details, service ground rent (where applicable) are given as a guide only and should be checked and confirmed by your solicitor prior to exchange of contract.