



4 Tremanor Way, Falmouth

Guide Price **£360,000**



Heather & Lay
The local property experts

- 1970s semi detached bungalow
- Select Close of just four homes
- Spacious two bedroom accommodation
- 19' UPVC double glazed bow window in the lounge
- Modern cream fitted kitchen/dining room with appliances
- Gas radiator central heating system; UPVC double glazed window
- Lovely, richly stocked garden, sheltered to rear
- Garage

THE PROPERTY

Built in the 1970's this rather special little development provides a lovely environment for its owners, set well away from the road in a thoroughly appealing and established setting. The property is semi-detached, with a richly stocked, sunny little garden, where to the rear it is enclosed and wonderfully private and sheltered. The accommodation would benefit from some updating, providing two bedrooms, each with wardrobes and cupboards built-in, plus a generous 19' long bow UPVC double glazed living room window and a modern fitted kitchen with dining area. A gas boiler fuels radiator central heating and hot water supply and most windows are UPVC double glazed. Beside No.4 is the block-built single-sized garage.

THE LOCATION

Tremanor Way lies off Trescobeas Road, discretely accessed up a private lane culminating in this select development of just four bungalows. The position is convenient for accessing all that Falmouth has to offer with the town centre, harbourside and seafront and beach all within a comfortable mile radius. Falmouth Hospital and secondary school lie along Trescobeas Road where a regular bus route runs to and from the town and seafront. Nearby Penmere railway station runs to Penryn and Truro, linking the mainline to Paddington.





ACCOMMODATION IN DETAIL

(ALL MEASUREMENTS ARE APPROXIMATE)

From the garage & parking space, down gentle steps with rail to

FRONT DOOR

UPVC double glazed and panelled into

ENTRANCE PORCH 5' 10" x 4' 0" (1.78m x 1.22m) Measurement to the front of louvre door, built-in cupboard space, housing the R.C.D, gas meter and coat hooks.

Multipane door into ...

LOUNGE/DINING ROOM 19' 0" x 13' 5" (5.79m x 4.09m)

A healthy size and with an unusually high 8' plus corniced ceiling, wide UPVC double glazed bowed window to front overlooking the garden. Open fireplace with slate surround and hearth. Radiator. Central Heating thermostat and boiler controls, white panelled door to inner hallway and ...

KITCHEN/DINING ROOM 15' 5" x 10' 3" (4.70m x 3.12m)

Open plan but with partial division defining kitchen and dining areas. UPVC double-glazed window and door to side and window to front overlooking the garden. The kitchen is fitted in a stylish cream shaker style with soft closure cupboards and drawers at base and eye level, glazed cabinet, corner cupboards, and worktops with an inset stainless steel sink a drainer and a mixer tap. Appliances include a slimline integrated dishwasher, chest-height double oven and grill. Touch control induction hob. Built-in AEG microwave oven. Linoleum flooring in kitchen, carpeted in the dining room where there is a radiator. Ceiling spotlight.

INNER HALLWAY

Double door airing cupboard, access to roof space. Doors to two bedrooms and shower room.

SHOWER ROOM 8' 6" x 5' 10" (2.59m x 1.78m)

Obscured UPVC double-glazed window to rear. Full wall tiling. White three-piece suite, concealed dual flush WC, wash hand basin and walk-in oversized shower cubicle.









BEDROOM ONE 12' 5" x 10' 5" (3.78m x 3.18m)

to face of built-in wardrobe and cupboard space. UPVC double-glazed window to rear. Radiator.

BEDROOM TWO 10' 10" x 8' 6" (3.30m x 2.59m)

to face of built-in wardrobe and cupboard space incorporating a dressing table, hand wash basin with cupboard beneath. Radiator.

ATTIC SPACE

Pull down ladder, boarded and with full head height. An excellent uncluttered storage space. Worcester boiler fuelling radiator central heating and hot water supply.

OUTSIDE

Gate to side with pathway and raised bed containing agapanthas and Wisteria. Tap. Around to the sheltered private rear courtyard garden facing South-East. High walled, totally secluded with area of paved terrace, shrub border containing camelia and with various climbers including a wisteria and celematis. Timber Shed.

FRONT GARDEN

A lovely area, full of shrubs and plants, life and colour with its lawn enclosed by borders. Shrubs include camellias, rhododendrons, acer, azalea, pierus, several hebe, firs, hydrangea, cotoneaster and fuschia as well as spring and summer flowering bulbs and plants. A small area of paved terrace to enjoy day-long summer sunshine.

GARAGE 17'6" x 9' A healthy single size with electronic, remotely opening up and down door. Power and light. Wall mounted cupboards.

Parking space to front. Gentle steps and a galvanised rail to the front door.

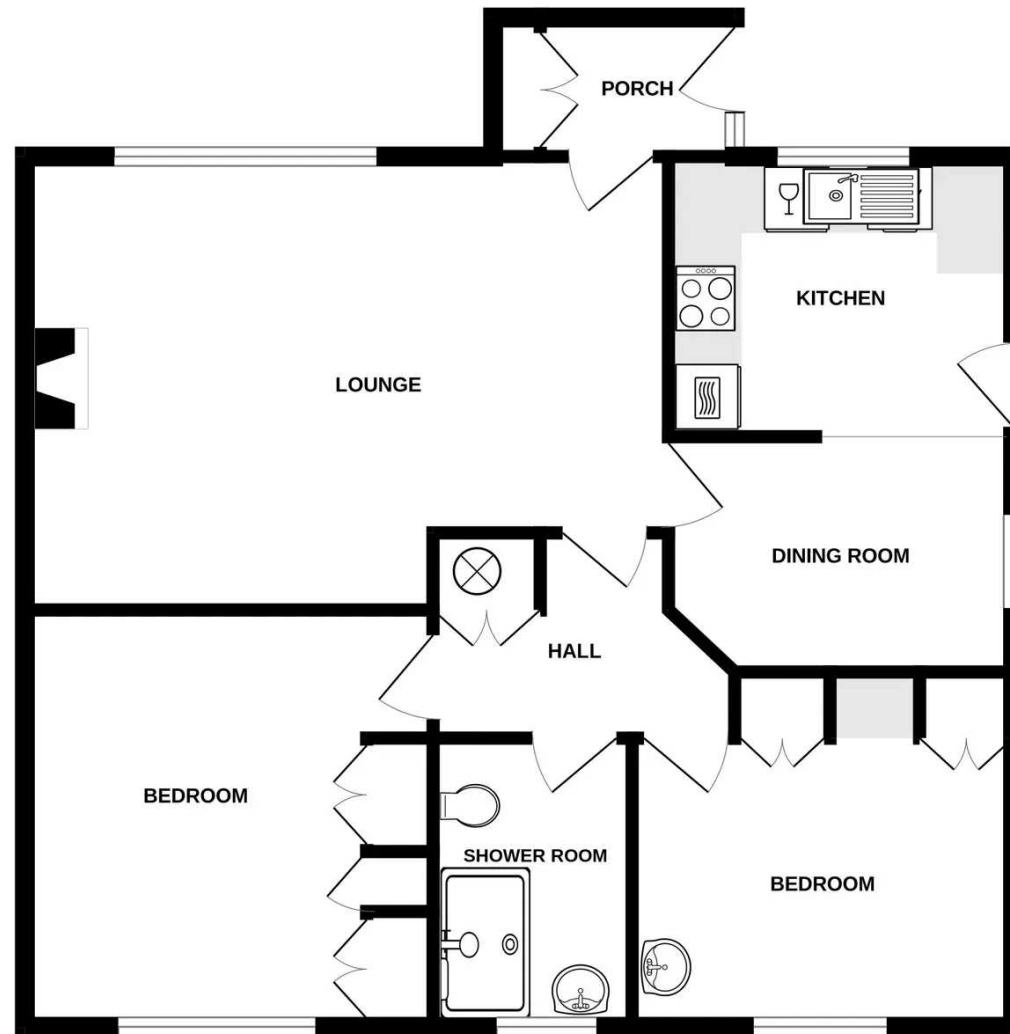
Council Tax band: C

EPC Energy Efficiency Rating: D

Services: Mains electricity, gas, water & drainage



GROUND FLOOR
782 sq.ft. (72.7 sq.m.) approx.



TOTAL FLOOR AREA : 782 sq.ft. (72.7 sq.m.) approx.

Whilst every attempt has been made to ensure the accuracy of the floorplan contained here, measurements of doors, windows, rooms and any other items are approximate and no responsibility is taken for any error, omission or mis-statement. This plan is for illustrative purposes only and should be used as such by any prospective purchaser. The services, systems and appliances shown have not been tested and no guarantee as to their operability or efficiency can be given.
Made with Metropix ©2024

Heather & Lay
The local property experts



Heather & Lay

3 Church Street, Falmouth - TR11 3DN

01326 319767 • sales@heather-lay.co.uk • www.heather-lay.co.uk/



Heather & Lay

The local property experts

These particulars are not an agreement or an invitation to enter into a contract. They are provided for information only and do not constitute an offer. The seller accepts no liability for any errors or omissions in these particulars. The particulars are subject to change without notice. The seller does not warrant the accuracy of the information provided in these particulars. The seller does not warrant the accuracy of the information provided in these particulars. The seller does not warrant the accuracy of the information provided in these particulars. The seller does not warrant the accuracy of the information provided in these particulars.